

Rig-I/DDX58 Rabbit pAb

Catalog No.: A13407 **1 Publications**

Basic Information

Observed MW

102-110kDa

Calculated MW

107kDa

Category

Primary antibody

Applications

WB, IF/ICC, ELISA

Cross-Reactivity

Human, Mouse, Rat

Background

DEAD box proteins, characterized by the conserved motif Asp-Glu-Ala-Asp (DEAD), are putative RNA helicases which are implicated in a number of cellular processes involving RNA binding and alteration of RNA secondary structure. This gene encodes a protein containing RNA helicase-DEAD box protein motifs and a caspase recruitment domain (CARD). It is involved in viral double-stranded (ds) RNA recognition and the regulation of the antiviral innate immune response. Mutations in this gene are associated with Singleton-Merten syndrome 2.

Recommended Dilutions

WB 1:500 - 1:2000**IF/ICC** 1:50 - 1:200**ELISA** Recommended starting concentration is 1 µg/mL. Please optimize the concentration based on your specific assay requirements.

Immunogen Information

Gene ID

23586

Swiss Prot

O95786

Immunogen

Recombinant protein (or fragment). This information is considered to be commercially sensitive.

Synonyms

RIG1; DDX58; RIG-I; RLR-1; SGMRT2; Rig-I/DDX58

Contact

 | 400-999-6126 | cn.market@abclonal.com.cn | www.abclonal.com.cn

Product Information

Source

Rabbit

Isotype

IgG

Purification

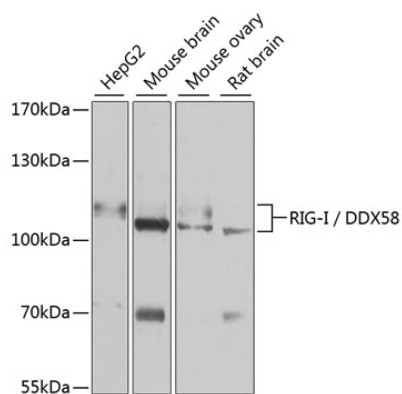
Affinity purification

Storage

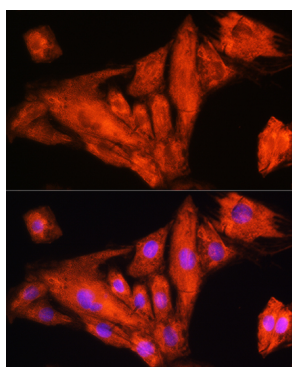
Store at -20°C. Avoid freeze / thaw cycles.

Buffer: PBS with 0.02% sodium azide, 50% glycerol, pH 7.3.

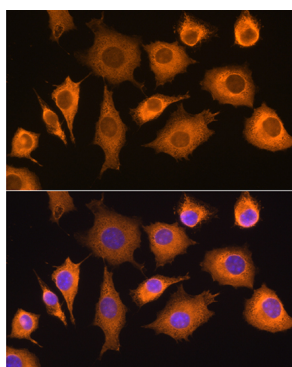
Validation Data



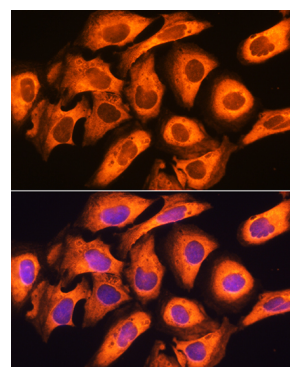
Western blot analysis of various lysates using Rig-I/DDX58 Rabbit pAb (A13407) at 1:1000 dilution. Secondary antibody: HRP-conjugated Goat anti-Rabbit IgG (H+L) (AS014) at 1:10000 dilution. Lysates/proteins: 25µg per lane. Blocking buffer: 3% nonfat dry milk in TBST. Detection: ECL Enhanced Kit (RM00021). Exposure time: 90s.



Immunofluorescence analysis of H9C2 cells using Rig-I/DDX58 Rabbit pAb (A13407) at dilution of 1:100. Blue: DAPI for nuclear staining.



Immunofluorescence analysis of L929 cells using Rig-I/DDX58 Rabbit pAb (A13407) at dilution of 1:100. Blue: DAPI for nuclear staining.



Immunofluorescence analysis of U20S cells using Rig-I/DDX58 Rabbit pAb (A13407) at dilution of 1:100. Blue: DAPI for nuclear staining.