

# TDP-43/TARDBP Rabbit pAb

Catalog No.: A13404

## Basic Information

### Observed MW

45kDa

### Calculated MW

45kDa

### Category

Primary antibody

### Applications

ELISA, WB, IHC-P, IF/ICC

### Cross-Reactivity

Human, Mouse, Rat

## Background

HIV-1, the causative agent of acquired immunodeficiency syndrome (AIDS), contains an RNA genome that produces a chromosomally integrated DNA during the replicative cycle. Activation of HIV-1 gene expression by the transactivator Tat is dependent on an RNA regulatory element (TAR) located downstream of the transcription initiation site. The protein encoded by this gene is a transcriptional repressor that binds to chromosomally integrated TAR DNA and represses HIV-1 transcription. In addition, this protein regulates alternate splicing of the CFTR gene. A similar pseudogene is present on chromosome 20.

## Recommended Dilutions

WB	1:500 - 1:1000
IHC-P	1:100 - 1:500
IF/ICC	1:50 - 1:200

## Immunogen Information

### Gene ID

23435

### Swiss Prot

Q13148

### Immunogen

Recombinant fusion protein containing a sequence corresponding to amino acids 1-100 of human TDP-43/TARDBP (NP\_031401.1).

### Synonyms

ALS10; TDP-43; TDP-43/TARDBP

## Contact

☎	400-999-6126
✉	cn.market@abclonal.com.cn
🌐	www.abclonal.com.cn

## Product Information

### Source

Rabbit

### Isotype

IgG

### Purification

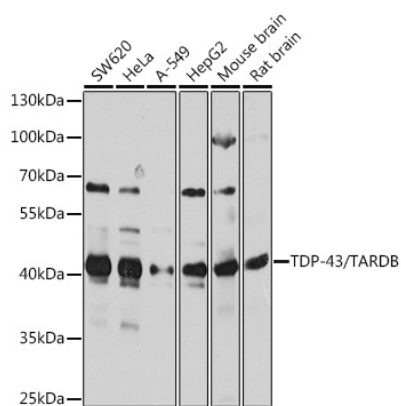
Affinity purification

### Storage

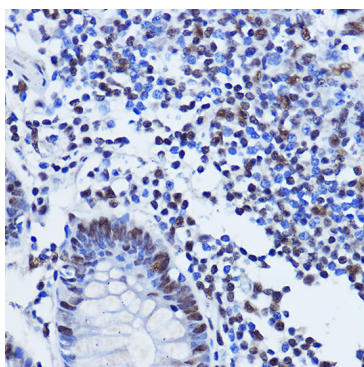
Store at -20°C. Avoid freeze / thaw cycles.

Buffer: PBS with 0.02% sodium azide, 50% glycerol, pH7.3.

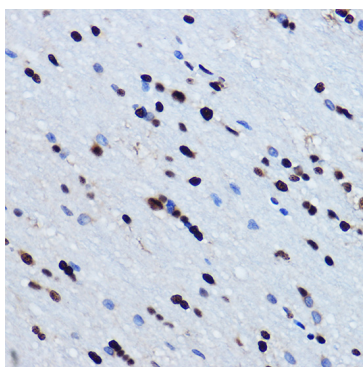
## Validation Data



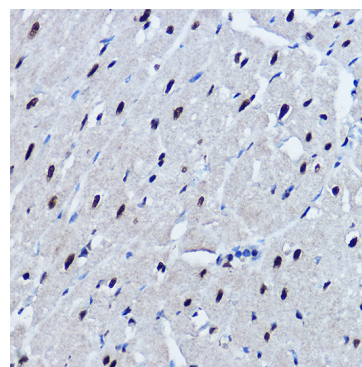
Western blot analysis of various lysates using TDP-43/TARDB Rabbit pAb (A13404) at 1:1000 dilution. Secondary antibody: HRP Goat Anti-Rabbit IgG (H+L) (AS014) at 1:10000 dilution. Lysates/proteins: 25µg per lane. Blocking buffer: 3% nonfat dry milk in TBST. Detection: ECL Basic Kit (RM00020). Exposure time: 10s.



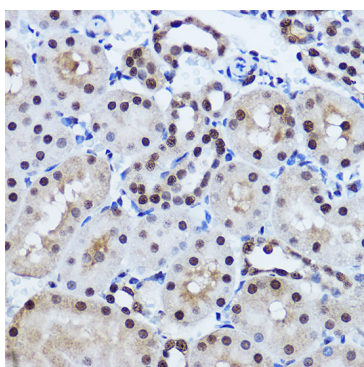
Immunohistochemistry analysis of TDP-43/TARDB in paraffin-embedded human colon using TDP-43/TARDB Rabbit pAb (A13404) at dilution of 1:500 (40x lens). Perform microwave antigen retrieval with 10 mM PBS buffer pH 7.2 before commencing with IHC staining protocol.



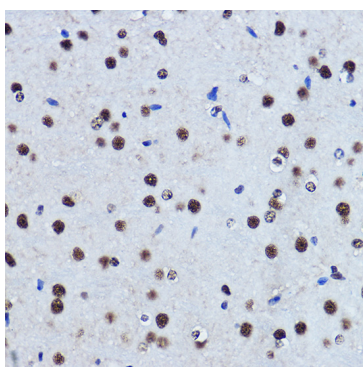
Immunohistochemistry analysis of TDP-43/TARDB in paraffin-embedded mouse brain using TDP-43/TARDB Rabbit pAb (A13404) at dilution of 1:500 (40x lens). Perform microwave antigen retrieval with 10 mM PBS buffer pH 7.2 before commencing with IHC staining protocol.



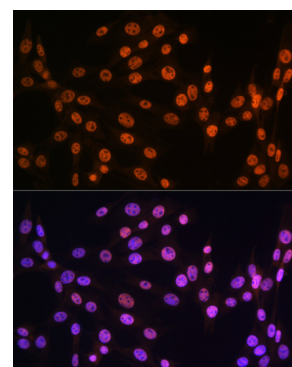
Immunohistochemistry analysis of TDP-43/TARDB in paraffin-embedded mouse heart using TDP-43/TARDB Rabbit pAb (A13404) at dilution of 1:500 (40x lens). Perform microwave antigen retrieval with 10 mM PBS buffer pH 7.2 before commencing with IHC staining protocol.



Immunohistochemistry analysis of TDP-43/TARDB in paraffin-embedded mouse kidney using TDP-43/TARDB Rabbit pAb (A13404) at dilution of 1:500 (40x lens). Perform microwave antigen retrieval with 10 mM PBS buffer pH 7.2 before commencing with IHC staining protocol.



Immunohistochemistry analysis of TDP-43/TARDB in paraffin-embedded rat brain using TDP-43/TARDB Rabbit pAb (A13404) at dilution of 1:500 (40x lens). Perform microwave antigen retrieval with 10 mM PBS buffer pH 7.2 before commencing with IHC staining protocol.



Immunofluorescence analysis of NIH-3T3 cells using TDP-43/TARDB Rabbit pAb (A13404) at dilution of 1:100 (40x lens). Secondary antibody: Cy3 Goat Anti-Rabbit IgG (H+L) (AS007) at 1:500 dilution. Blue: DAPI for nuclear staining.