

# [KO Validated] SEPHS1 Rabbit pAb

Catalog No.: A13403 **KO** Validated

## Basic Information

### Observed MW

40kDa

### Calculated MW

43kDa

### Category

Primary antibody

### Applications

WB, IHC-P, IF/ICC, ELISA

### Cross-Reactivity

Human, Mouse, Rat

## Background

This gene encodes an enzyme that synthesizes selenophosphate from selenide and ATP. Selenophosphate is the selenium donor used to synthesize selenocysteine, which is co-translationally incorporated into selenoproteins at in-frame UGA codons.

## Recommended Dilutions

|               |   |
|---------------|---|
| <b>WB</b>     | 1:500 - 1:1000  |
| <b>IHC-P</b>  | 1:50 - 1:200  |
| <b>IF/ICC</b> | 1:50 - 1:200  |
| <b>ELISA</b>  | Recommended starting concentration is 1 µg/mL. Please optimize the concentration based on your specific assay requirements. |

## Immunogen Information

### Gene ID

22929

### Swiss Prot

P49903

### Immunogen

Recombinant protein (or fragment). This information is considered to be commercially sensitive.

### Synonyms

SPS; SELD; SPS1; S1

## Contact

|  |                           |
|--|---------------------------|
|  | 400-999-6126              |
|  | cn.market@abclonal.com.cn |
|  | www.abclonal.com.cn       |

## Product Information

### Source

Rabbit

### Isotype

IgG

### Purification

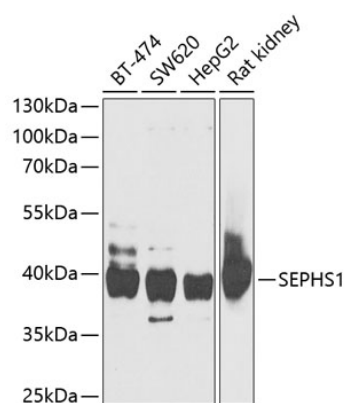
Affinity purification

### Storage

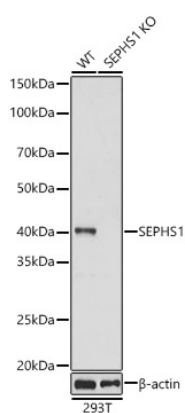
Store at -20°C. Avoid freeze / thaw cycles.

Buffer: PBS containing 50% glycerol, preserved with proclin300 or sodium azide (as specified on the Certificate of Analysis), pH 7.3.

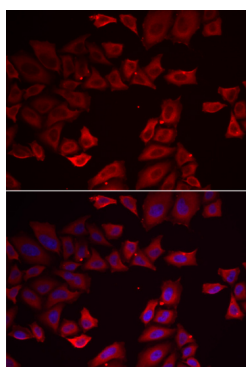
## Validation Data



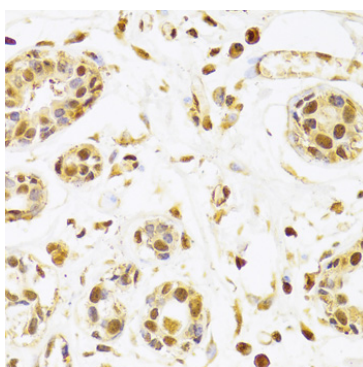
Western blot analysis of various lysates using SEPHS1 Rabbit pAb (A13403) at 1:1000 dilution. Secondary antibody: HRP-conjugated Goat anti-Rabbit IgG (H+L) (AS014) at 1:10000 dilution. Lysates/proteins: 25µg per lane. Blocking buffer: 3% nonfat dry milk in TBST. Detection: ECL Basic Kit (RM00020). Exposure time: 30s.



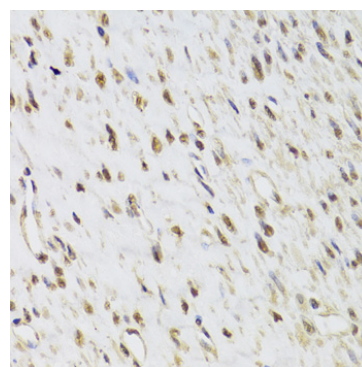
Western blot analysis of lysates from wild type (WT) and SEPHS1 knockout (KO) 293T(KO) cells, using [KO Validated] SEPHS1 Rabbit pAb (A13403) at 1:1000 dilution. Secondary antibody: HRP-conjugated Goat anti-Rabbit IgG (H+L) (AS014) at 1:10000 dilution. Lysates/proteins: 25µg per lane. Blocking buffer: 3% nonfat dry milk in TBST. Detection: ECL Basic Kit (RM00020). Exposure time: 1s.



Immunofluorescence analysis of HeLa cells using SEPHS1 Rabbit pAb (A13403). Secondary antibody: Cy3-conjugated Goat anti-Rabbit IgG (H+L) (AS007) at 1:500 dilution. Blue: DAPI for nuclear staining.



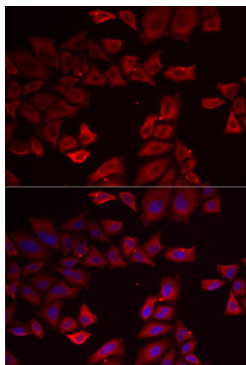
Immunohistochemistry analysis of paraffin-embedded Human breast using SEPHS1 Rabbit pAb (A13403) at dilution of 1:100 (40x lens). Microwave antigen retrieval performed with 0.01M PBS Buffer (pH 7.2) prior to IHC staining.



Immunohistochemistry analysis of paraffin-embedded Human leiomyoma of uterus using SEPHS1 Rabbit pAb (A13403) at dilution of 1:100 (40x lens). Microwave antigen retrieval performed with 0.01M PBS Buffer (pH 7.2) prior to IHC staining.

## Validation Data

---



Immunofluorescence analysis of MCF7 cells using [KO Validated] SEPHS1 Rabbit pAb (A13403). Secondary antibody: Cy3-conjugated Goat anti-Rabbit IgG (H+L) (AS007) at 1:500 dilution. Blue: DAPI for nuclear staining.