

PIWIL3 Rabbit pAb

Catalog No.: A13203

Basic Information

Observed MW

101kDa

Calculated MW

101kDa

Category

Primary antibody

Applications

WB, ELISA

Cross-Reactivity

Mouse, Rat

Background

This gene encodes a member of the PIWI subfamily of Argonaute family proteins. This subfamily of proteins contains a PAZ domain, found in proteins involved in RNA-mediated gene silencing, and a C-terminal Piwi domain. The encoded protein is thought to function in maintenance of germline cells. Multiple transcript variants encoding different isoforms have been found for this gene.

Recommended Dilutions

WB 1:500 - 1:2000

ELISA Recommended starting concentration is 1 µg/mL. Please optimize the concentration based on your specific assay requirements.

Immunogen Information

Gene ID

440822

Swiss Prot

Q7Z3Z3

Immunogen

Recombinant protein (or fragment). This information is considered to be commercially sensitive.

Synonyms

HIWI3; PIWIL3

Contact

☎ | 400-999-6126

✉ | cn.market@abclonal.com.cn

🌐 | www.abclonal.com.cn

Product Information

Source

Rabbit

Isotype

IgG

Purification

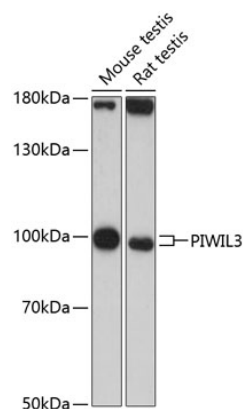
Affinity purification

Storage

Store at -20°C. Avoid freeze / thaw cycles.

Buffer: PBS with 0.01% thimerosal, 50% glycerol, pH7.3.

Validation Data



Western blot analysis of various lysates using PIWIL3 Rabbit pAb (A13203) at 1:3000 dilution.
Secondary antibody: HRP-conjugated Goat anti-Rabbit IgG (H+L) (AS014) at 1:10000 dilution.
Lysates/proteins: 25µg per lane.
Blocking buffer: 3% nonfat dry milk in TBST.
Detection: ECL Basic Kit (RM00020).
Exposure time: 90s.