

MTNR1A Rabbit pAb

Catalog No.: A13030 **9 Publications**

Basic Information

Observed MW

39kDa

Calculated MW

39kDa

Category

Primary antibody

Applications

WB,IHC-P,ELISA

Cross-Reactivity

Human, Mouse, Rat

Background

This gene encodes one of two high affinity forms of a receptor for melatonin, the primary hormone secreted by the pineal gland. This receptor is a G-protein coupled, 7-transmembrane receptor that is responsible for melatonin effects on mammalian circadian rhythm and reproductive alterations affected by day length. The receptor is an integral membrane protein that is readily detectable and localized to two specific regions of the brain. The hypothalamic suprachiasmatic nucleus appears to be involved in circadian rhythm while the hypophyseal pars tuberalis may be responsible for the reproductive effects of melatonin.

Recommended Dilutions

WB 1:1000 - 1:5000

IHC-P 1:100 - 1:200

ELISA Recommended starting concentration is 1 µg/mL. Please optimize the concentration based on your specific assay requirements.

Immunogen Information

Gene ID

4543

Swiss Prot

P48039

Immunogen

Recombinant protein (or fragment). This information is considered to be commercially sensitive.

Synonyms

MT1; MEL-1A-R; MTNR1A

Contact

☎ | 400-999-6126

✉ | cn.market@abclonal.com.cn

🌐 | www.abclonal.com.cn

Product Information

Source

Rabbit

Isotype

IgG

Purification

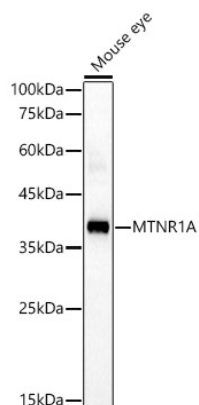
Affinity purification

Storage

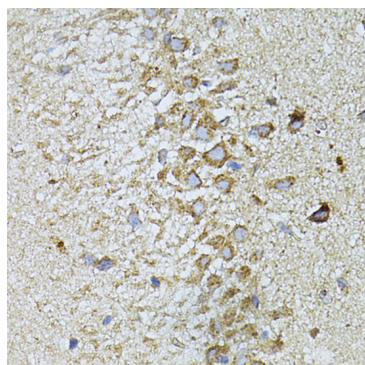
Store at -20°C. Avoid freeze / thaw cycles.

Buffer: PBS containing 50% glycerol, preserved with proclin300 or sodium azide (as specified on the Certificate of Analysis), pH 7.3.

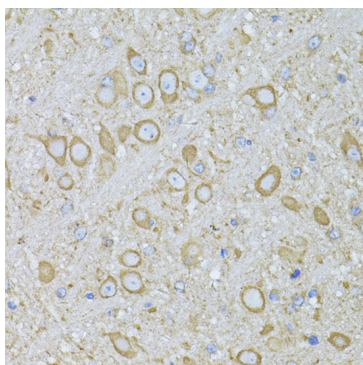
Validation Data



Western blot analysis of lysates from Mouse eye, using MTNR1A Rabbit pAb (A13030) at 1:2000 dilution.
Secondary antibody: HRP-conjugated Goat anti-Rabbit IgG (H+L) (AS014) at 1:10000 dilution.
Lysates/proteins: 25µg per lane.
Blocking buffer: 3% nonfat dry milk in TBST.
Detection: ECL Basic Kit (RM00020).
Exposure time: 60s.



Immunohistochemistry analysis of paraffin-embedded Rat brain using MTNR1A Rabbit pAb (A13030) at dilution of 1:100 (40x lens). Microwave antigen retrieval performed with 0.01M PBS Buffer (pH 7.2) prior to IHC staining.



Immunohistochemistry analysis of paraffin-embedded Mouse brain using MTNR1A Rabbit pAb (A13030) at dilution of 1:100 (40x lens). Microwave antigen retrieval performed with 0.01M PBS Buffer (pH 7.2) prior to IHC staining.