

POLE2 Rabbit pAb

Catalog No.: A12842

Basic Information

Observed MW

59kDa

Calculated MW

60kDa

Category

Primary antibody

Applications

WB, ELISA

Cross-Reactivity

Human, Mouse

Background

DNA polymerase epsilon, which is involved in DNA repair and replication, is composed of a large catalytic subunit and a small accessory subunit. The protein encoded by this gene represents the small subunit (B). Defects in this gene have been linked to colorectal cancer and to combined immunodeficiency.

Recommended Dilutions

WB 1:500 - 1:2000

ELISA Recommended starting concentration is 1 µg/mL. Please optimize the concentration based on your specific assay requirements.

Immunogen Information

Gene ID

5427

Swiss Prot

P56282

Immunogen

Recombinant protein (or fragment). This information is considered to be commercially sensitive.

Synonyms

DPE2; POLE2

Contact

 | 400-999-6126

 | cn.market@abclonal.com.cn

 | www.abclonal.com.cn

Product Information

Source

Rabbit

Isotype

IgG

Purification

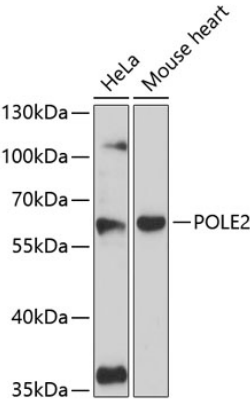
Affinity purification

Storage

Store at -20°C. Avoid freeze / thaw cycles.

Buffer: PBS with 0.01% thimerosal, 50% glycerol, pH 7.3.

Validation Data



Western blot analysis of various lysates using POLE2 Rabbit pAb (A12842) at 1:3000 dilution.
Secondary antibody: HRP-conjugated Goat anti-Rabbit IgG (H+L) (AS014) at 1:10000 dilution.
Lysates/proteins: 25µg per lane.
Blocking buffer: 3% nonfat dry milk in TBST.
Detection: ECL Basic Kit (RM00020).
Exposure time: 90s.