

# [KO Validated] SHP2 Rabbit pAb

Catalog No.: A12486 **KO** **Validated** **1 Publications**

## Basic Information

### Observed MW

75kDa

### Calculated MW

68kDa

### Category

Primary antibody

### Applications

WB, IF/ICC, IP, ELISA

### Cross-Reactivity

Human, Mouse, Rat

## Background

The protein encoded by this gene is a member of the protein tyrosine phosphatase (PTP) family. PTPs are known to be signaling molecules that regulate a variety of cellular processes including cell growth, differentiation, mitotic cycle, and oncogenic transformation. This PTP contains two tandem Src homology-2 domains, which function as phospho-tyrosine binding domains and mediate the interaction of this PTP with its substrates. This PTP is widely expressed in most tissues and plays a regulatory role in various cell signaling events that are important for a diversity of cell functions, such as mitogenic activation, metabolic control, transcription regulation, and cell migration. Mutations in this gene are a cause of Noonan syndrome as well as acute myeloid leukemia.

## Recommended Dilutions

**WB** 1:500 - 1:2000**IF/ICC** 1:50 - 1:200**IP** 0.5µg-4µg antibody for  
200µg-400µg extracts of  
whole cells**ELISA** Recommended starting  
concentration is 1 µg/mL.  
Please optimize the  
concentration based on  
your specific assay  
requirements.

## Contact

 | 400-999-6126 | [cn.market@abclonal.com.cn](mailto:cn.market@abclonal.com.cn) | [www.abclonal.com.cn](http://www.abclonal.com.cn)

## Immunogen Information

### Gene ID

5781

### Swiss Prot

Q06124

### Immunogen

Recombinant fusion protein containing a sequence corresponding to amino acids 1-460 of human SHP2 (NP\_002825.3).

### Synonyms

CFC; NS1; JMML; SHP2; BPTP3; PTP2C; METCDS; PTP-1D; SH-PTP2; SH-PTP3; P2

## Product Information

### Source

Rabbit

### Isotype

IgG

### Purification

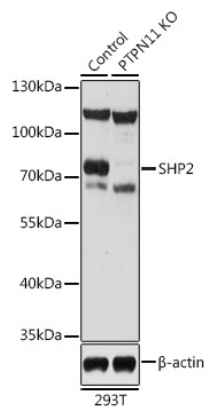
Affinity purification

### Storage

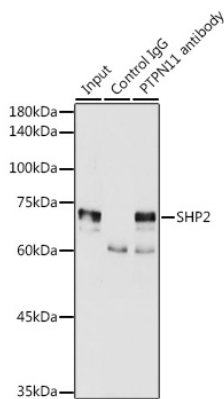
Store at -20°C. Avoid freeze / thaw cycles.

Buffer: PBS with 0.02% Sodium azide, 50% glycerol, pH7.3.

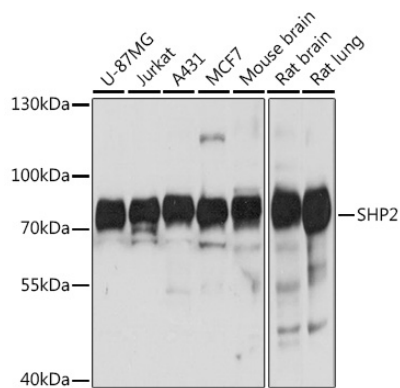
Validation Data



Western blot analysis of lysates from wild type (WT) and SHP2 knockout (KO) 293T cells, using [KO Validated] SHP2 Rabbit pAb (A12486) at 1:1000 dilution.  
Secondary antibody: HRP-conjugated Goat anti-Rabbit IgG (H+L) (AS014) at 1:10000 dilution.  
Lysates/proteins: 25µg per lane.  
Blocking buffer: 3% nonfat dry milk in TBST.  
Detection: ECL Basic Kit (RM00020).  
Exposure time: 30s.



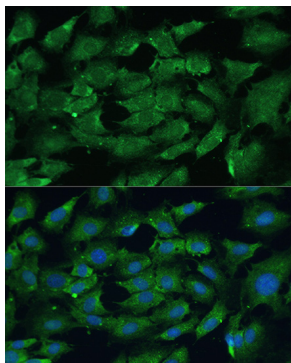
Immunoprecipitation analysis of 300 µg extracts of MCF7 cells using 3 µg SHP2 antibody (A12486).  
Western blot was performed from the immunoprecipitate using SHP2 antibody (A12486) at a dilution of 1:2000.



Western blot analysis of various lysates using [KO Validated] SHP2 Rabbit pAb (A12486) at 1:1000 dilution.  
Secondary antibody: HRP-conjugated Goat anti-Rabbit IgG (H+L) (AS014) at 1:10000 dilution.  
Lysates/proteins: 25µg per lane.  
Blocking buffer: 3% nonfat dry milk in TBST.  
Detection: ECL Basic Kit (RM00020).  
Exposure time: 3s.

## Validation Data

---



Immunofluorescence analysis of C6 cells using [KO Validated] SHP2 Rabbit pAb (A12486) at dilution of 1:100. Blue: DAPI for nuclear staining.