

SERPING1 Rabbit pAb

Catalog No.: A12407 **2 Publications**

Basic Information

Observed MW

60kDa

Calculated MW

55kDa

Category

Primary antibody

Applications

WB, IF/ICC, ELISA

Cross-Reactivity

Human, Mouse, Rat

Background

This gene encodes a highly glycosylated plasma protein involved in the regulation of the complement cascade. Its encoded protein, C1 inhibitor, inhibits activated C1r and C1s of the first complement component and thus regulates complement activation. It is synthesized in the liver, and its deficiency is associated with hereditary angioneurotic oedema (HANE). Alternative splicing results in multiple transcript variants encoding the same isoform.

Recommended Dilutions

WB 1:500 - 1:1000

IF/ICC 1:50 - 1:200

ELISA Recommended starting concentration is 1 µg/mL. Please optimize the concentration based on your specific assay requirements.

Immunogen Information

Gene ID

710

Swiss Prot

P05155

Immunogen

Recombinant protein (or fragment). This information is considered to be commercially sensitive.

Synonyms

C1IN; C1NH; HAE1; HAE2; C1INH; SERPING1

Contact

☎ | 400-999-6126

✉ | cn.market@abclonal.com.cn

🌐 | www.abclonal.com.cn

Product Information

Source

Rabbit

Isotype

IgG

Purification

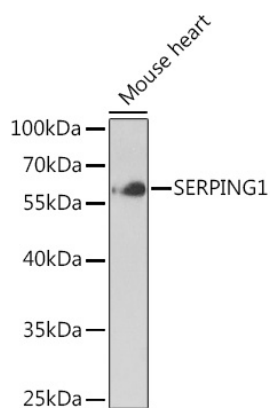
Affinity purification

Storage

Store at -20°C. Avoid freeze / thaw cycles.

Buffer: PBS containing 50% glycerol, preserved with proclin300 or sodium azide (as specified on the Certificate of Analysis), pH 7.3.

Validation Data

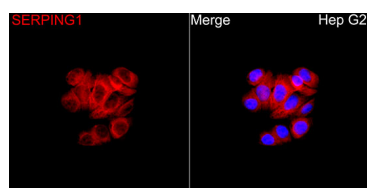


Western blot analysis of lysates from mouse heart, using SERPING1 Rabbit pAb (A12407) at 1:1000 dilution.

Secondary antibody: HRP-conjugated Goat anti-Rabbit IgG (H+L) (AS014) at 1:10000 dilution.

Lysates/proteins: 25µg per lane.

Blocking buffer: 3% nonfat dry milk in TBST.



Immunofluorescence analysis of Hep G2 cells using SERPING1 Rabbit pAb (A12407) at a dilution of 1:100 (40x lens). Secondary antibody: Cy3 Goat Anti-Rabbit IgG (H+L) (AS007) at 1:500 dilution. Blue: DAPI for nuclear staining.