

β-Tubulin Rabbit mAb

Catalog No.: A12289

Recombinant

70 Publications

Basic Information

Observed MW

55 kDa

Calculated MW

50 kDa

Category

Primary antibody

Applications

WB, IHC-P, IP, ELISA

Cross-Reactivity

Human, Mouse, Rat

CloneNo number

ARC0203

Background

This gene encodes a beta tubulin protein. This protein forms a dimer with alpha tubulin and acts as a structural component of microtubules. Mutations in this gene cause cortical dysplasia, complex, with other brain malformations 6. Alternative splicing results in multiple splice variants. There are multiple pseudogenes for this gene on chromosomes 1, 6, 7, 8, 9, and 13.

Recommended Dilutions

WB 1:5000-1:20000

IHC-P 1:50 - 1:200

IP 0.5μg-4μg antibody for
200μg-400μg extracts of
whole cells

ELISA Recommended starting
concentration is 1 μg/mL.
Please optimize the
concentration based on
your specific assay
requirements.

Immunogen Information

Gene ID

203068

Swiss Prot

P07437

Immunogen

Synthetic peptide. This information is considered to be commercially sensitive.

Synonyms

M40; TUBB1; TUBB5; CDCBM6; CSCSC1; OK/SW-cl.56; β-Tubulin

Contact

☎ | 400-999-6126

✉ | cn.market@abclonal.com.cn

🌐 | www.abclonal.com.cn

Product Information

Source

Rabbit

Isotype

IgG

Purification

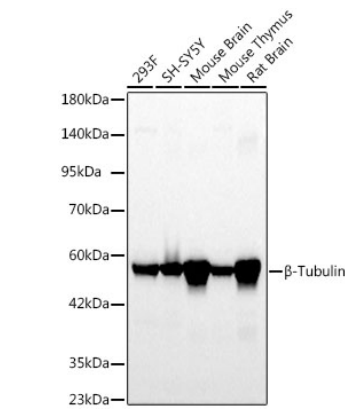
Affinity purification

Storage

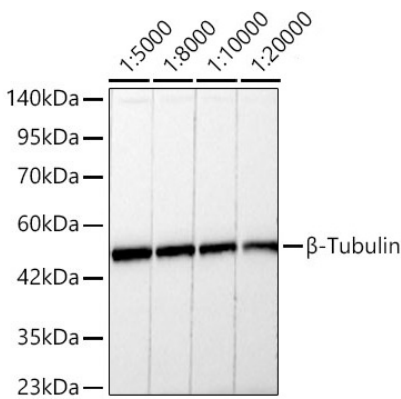
Store at -20°C. Avoid freeze / thaw cycles.

Buffer: PBS with 0.09% Sodium azide, 0.05% BSA, 50% glycerol, pH7.3.

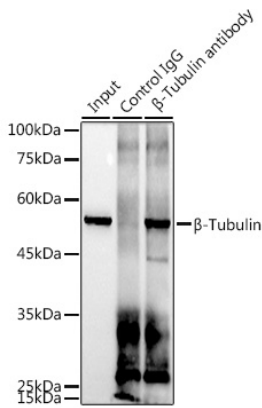
Validation Data



Western blot analysis of various lysates using β -Tubulin Rabbit mAb (A12289) at 1:5000 dilution.
Secondary antibody: HRP-conjugated Goat anti-Rabbit IgG (H+L) (AS014) at 1:10000 dilution.
Lysates/proteins: 25 μ g per lane.
Blocking buffer: 3% nonfat dry milk in TBST.
Detection: ECL Basic Kit (RM00020).
Exposure time: 20s.

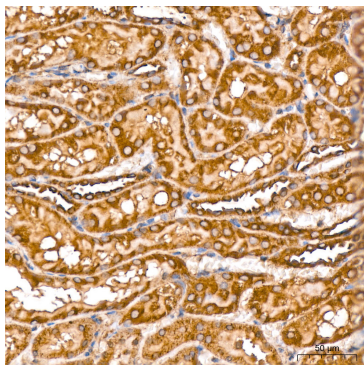


Western blot analysis of lysates from 293F cells, using β -Tubulin Rabbit mAb (A12289) at 1:1000-1:30000 dilution.
Secondary antibody: HRP-conjugated Goat anti-Rabbit IgG (H+L) (AS014) at 1:10000 dilution.
Lysates/proteins: 25 μ g per lane.
Blocking buffer: 3% nonfat dry milk in TBST.
Detection: ECL Basic Kit (RM00020).
Exposure time: 10s.



Immunoprecipitation analysis of 300 μ g extracts of 293T cells using 3 μ g β -Tubulin Rabbit mAb (A12289).
Western blot was performed from the immunoprecipitate using β -Tubulin Rabbit mAb (A12289) at a dilution of 1:1000.

Validation Data



Immunohistochemistry analysis of paraffin-embedded Rat kidney tissue using β -Tubulin Rabbit mAb (A12289) at a dilution of 1:200 (40x lens). High pressure antigen retrieval performed with 0.01M Citrate buffer (pH 6.0) prior to IHC staining.