

Aromatase (CYP19A1) Rabbit mAb

Catalog No.: A12238 **Recombinant** **6 Publications**

Basic Information

Observed MW

58kDa

Calculated MW

58kDa

Category

Primary antibody

Applications

WB,IF-P,IHC-P,ELISA

Cross-Reactivity

Human, Mouse, Rat

CloneNo number

ARC0635

Background

This gene encodes a member of the cytochrome P450 superfamily of enzymes. The cytochrome P450 proteins are monooxygenases which catalyze many reactions involved in drug metabolism and synthesis of cholesterol, steroids and other lipids. This protein localizes to the endoplasmic reticulum and catalyzes the last steps of estrogen biosynthesis. Mutations in this gene can result in either increased or decreased aromatase activity; the associated phenotypes suggest that estrogen functions both as a sex steroid hormone and in growth or differentiation. Alternative promoter use and alternative splicing results in multiple transcript variants that have different tissue specificities.

Recommended Dilutions

WB 1:1000 - 1:6000**IF-P** 1:100 - 1:400**IHC-P** 1:800 - 1:8000**ELISA** Recommended starting concentration is 1 µg/mL. Please optimize the concentration based on your specific assay requirements.

Immunogen Information

Gene ID

1588

Swiss Prot

P11511

Immunogen

Synthetic peptide. This information is considered to be commercially sensitive.

Synonyms

ARO; ARO1; CPV1; CYAR; CYP19; CYPXIX; P-450AROM; Aromatase (CYP19A1)

Contact

 | 400-999-6126 | cn.market@abclonal.com.cn | www.abclonal.com.cn

Product Information

Source

Rabbit

Isotype

IgG

Purification

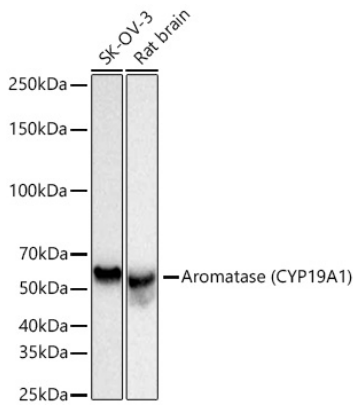
Affinity purification

Storage

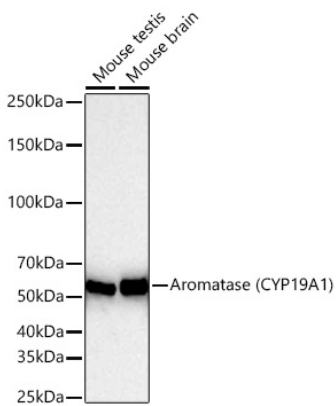
Store at -20°C. Avoid freeze / thaw cycles.

Buffer: PBS containing 50% glycerol and 0.05% BSA, preserved with proclin300 or sodium azide (as specified on the Certificate of Analysis), pH 7.3.

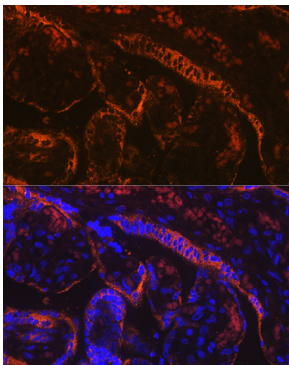
Validation Data



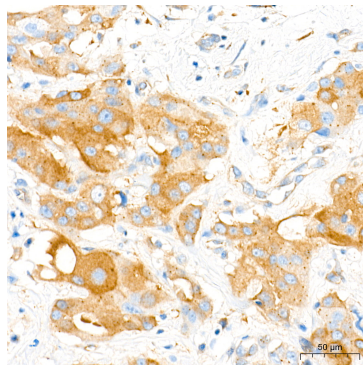
Western blot analysis of various lysates using Aromatase (CYP19A1) Rabbit mAb (A12238) at 1:1000 dilution incubated at room temperature for 1.5 hours.
 Secondary antibody: HRP-conjugated Goat anti-Rabbit IgG (H+L) (AS014) at 1:10000 dilution.
 Lysates/proteins: 25 µg per lane.
 Blocking buffer: 3% nonfat dry milk in TBST.
 Detection: ECL Basic Kit (RM00020).
 Exposure time: 1s.



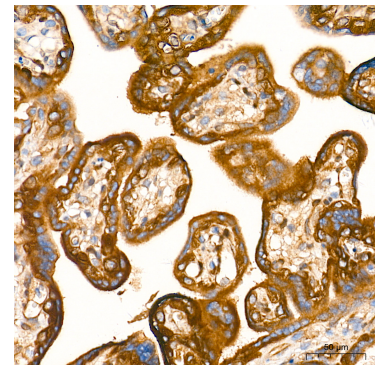
Western blot analysis of various lysates using Aromatase (CYP19A1) Rabbit mAb (A12238) at 1:1000 dilution incubated at room temperature for 1.5 hours.
 Secondary antibody: HRP-conjugated Goat anti-Rabbit IgG (H+L) (AS014) at 1:10000 dilution.
 Lysates/proteins: 25 µg per lane.
 Blocking buffer: 3% nonfat dry milk in TBST.
 Detection: ECL Basic Kit (RM00020).
 Exposure time: 90s.



Immunofluorescence analysis of paraffin-embedded human placenta using Aromatase (CYP19A1) Rabbit mAb (A12238) at dilution of 1:100 (40x lens). Secondary antibody: Cy3-conjugated Goat anti-Rabbit IgG (H+L) (AS007) at 1:500 dilution. Blue: DAPI for nuclear staining.



Immunohistochemistry analysis of paraffin-embedded Human breast cancer tissue using Aromatase (CYP19A1) Rabbit mAb (A12238) at a dilution of 1:4000 (40x lens). High pressure antigen retrieval performed with 0.01M Tris-EDTA Buffer(pH 9.0) prior to IHC staining.



Immunohistochemistry analysis of paraffin-embedded Human placenta tissue using Aromatase (CYP19A1) Rabbit mAb (A12238) at a dilution of 1:4000 (40x lens). High pressure antigen retrieval performed with 0.01M Tris-EDTA Buffer(pH 9.0) prior to IHC staining.