

MICU2 Rabbit pAb

Catalog No.: A12198 **2 Publications**

Basic Information

Observed MW

45kDa

Calculated MW

50kDa

Category

Primary antibody

Applications

WB, ELISA

Cross-Reactivity

Human

Background

Enables protein heterodimerization activity. Involved in calcium import into the mitochondrion and negative regulation of mitochondrial calcium ion concentration. Located in mitochondrial inner membrane and mitochondrial intermembrane space. Part of uniplex complex.

Recommended Dilutions

WB 1:500 - 1:2000

ELISA Recommended starting concentration is 1 µg/mL. Please optimize the concentration based on your specific assay requirements.

Immunogen Information

Gene ID

221154

Swiss Prot

Q8IYU8

Immunogen

Synthetic peptide. This information is considered to be commercially sensitive.

Synonyms

EFHA1; 1110008L20Rik; MICU2

Contact

☎ | 400-999-6126

✉ | cn.market@abclonal.com.cn

🌐 | www.abclonal.com.cn

Product Information

Source

Rabbit

Isotype

IgG

Purification

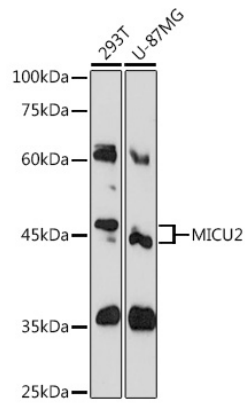
Affinity purification

Storage

Store at -20°C. Avoid freeze / thaw cycles.

Buffer: PBS containing 50% glycerol, preserved with proclin300 or sodium azide (as specified on the Certificate of Analysis), pH 7.3.

Validation Data



Western blot analysis of various lysates using MICU2 Rabbit pAb (A12198) at 1:1000 dilution.
Secondary antibody: HRP-conjugated Goat anti-Rabbit IgG (H+L) (AS014) at 1:10000 dilution.
Lysates/proteins: 25 μ g per lane.
Blocking buffer: 3% nonfat dry milk in TBST.
Detection: ECL Basic Kit (RM00020).
Exposure time: 60s.