

SRPX Rabbit pAb

Catalog No.: A1217 **1 Publications**

Basic Information

Observed MW

35kDa

Calculated MW

52kDa

Category

Primary antibody

Applications

WB,IHC-P,ELISA

Cross-Reactivity

Human, Mouse

Background

Predicted to be an extracellular matrix structural constituent. Predicted to be involved in cell adhesion. Predicted to act upstream of or within several processes, including negative regulation of cell proliferation involved in contact inhibition; phagolysosome assembly; and positive regulation of extrinsic apoptotic signaling pathway in absence of ligand. Part of collagen-containing extracellular matrix.

Recommended Dilutions

WB 1:500 - 1:2000

IHC-P 1:50 - 1:100

ELISA Recommended starting concentration is 1 µg/mL. Please optimize the concentration based on your specific assay requirements.

Immunogen Information

Gene ID

8406

Swiss Prot

P78539

Immunogen

Recombinant protein (or fragment). This information is considered to be commercially sensitive.

Synonyms

DRS; ETX1; SRPX1; HEL-S-83p; SRPX

Contact

☎ | 400-999-6126

✉ | cn.market@abclonal.com.cn

🌐 | www.abclonal.com.cn

Product Information

Source

Rabbit

Isotype

IgG

Purification

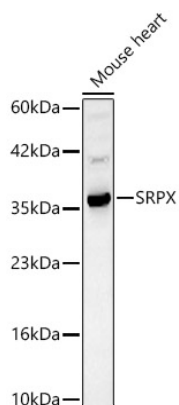
Affinity purification

Storage

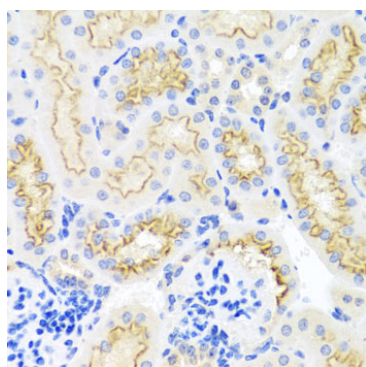
Store at -20°C. Avoid freeze / thaw cycles.

Buffer: PBS with 0.02% sodium azide, 50% glycerol, pH7.3.

Validation Data



Western blot analysis of lysates from Mouse heart, using SRPX Rabbit pAb (A1217) at 1:1000 dilution.
Secondary antibody: HRP-conjugated Goat anti-Rabbit IgG (H+L) (AS014) at 1:10000 dilution.
Lysates/proteins: 25µg per lane.
Blocking buffer: 3% nonfat dry milk in TBST.
Detection: ECL Basic Kit (RM00020).
Exposure time: 30s.



Immunohistochemistry analysis of paraffin-embedded Mouse kidney using SRPX Rabbit pAb (A1217) at dilution of 1:100 (40x lens).
Microwave antigen retrieval performed with 0.01M PBS Buffer (pH 7.2) prior to IHC staining.