

JAK1 Rabbit mAb

Catalog No.: A11963

Recombinant

10 Publications

Basic Information

Observed MW

130kDa

Calculated MW

133kDa

Category

Primary antibody

Applications

WB, ELISA

Cross-Reactivity

Human, Mouse, Rat

CloneNo number

ARC0434

Background

This gene encodes a membrane protein that is a member of a class of protein-tyrosine kinases (PTK) characterized by the presence of a second phosphotransferase-related domain immediately N-terminal to the PTK domain. The encoded kinase phosphorylates STAT proteins (signal transducers and activators of transcription) and plays a key role in interferon-alpha/beta, interferon-gamma, and cytokine signal transduction. This gene plays a crucial role in effecting the expression of genes that mediate inflammation, epithelial remodeling, and metastatic cancer progression. This gene is a key component of the interleukin-6 (IL-6)/JAK1/STAT3 immune and inflammation response and is a therapeutic target for alleviating cytokine storms. The kinase activity of this gene is directly inhibited by the suppressor of cytokine signalling 1 (SOCS1) protein. Alternative splicing results in multiple transcript variants.

Recommended Dilutions

WB 1:1000 - 1:2000**ELISA** Recommended starting concentration is 1 µg/mL. Please optimize the concentration based on your specific assay requirements.

Immunogen Information

Gene ID

3716

Swiss Prot

P23458

Immunogen

Synthetic peptide. This information is considered to be commercially sensitive.

Synonyms

JTK3; AIIDE; JAK1A; JAK1B; JAK1

Contact

 | 400-999-6126 | cn.market@abclonal.com.cn | www.abclonal.com.cn

Product Information

Source

Rabbit

Isotype

IgG

Purification

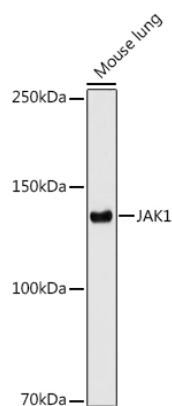
Affinity purification

Storage

Store at -20°C. Avoid freeze / thaw cycles.

Buffer: PBS with 0.02% sodium azide, 0.05% BSA, 50% glycerol, pH7.3.

Validation Data



Western blot analysis of lysates from Mouse lung using JAK1 Rabbit mAb (A11963) at 1:1000 dilution incubated overnight at 4°C.

Secondary antibody: HRP-conjugated Goat anti-Rabbit IgG (H+L) (AS014) at 1:10000 dilution.

Lysates/proteins: 25µg per lane.

Blocking buffer: 3% nonfat dry milk in TBST.

Detection: ECL Enhanced Kit (RM00021).

Exposure time: 180s.