

LC3B Rabbit pAb

Catalog No.: A11923 **1 Publications**

Basic Information

Observed MW

20kDa

Calculated MW

15kDa

Category

Primary antibody

Applications

ELISA, WB, IHC-P, IF/ICC

Cross-Reactivity

Human, Mouse, Rat

Background

The product of this gene is a subunit of neuronal microtubule-associated MAP1A and MAP1B proteins, which are involved in microtubule assembly and important for neurogenesis. Studies on the rat homolog implicate a role for this gene in autophagy, a process that involves the bulk degradation of cytoplasmic component.

Recommended Dilutions

| | |
|--------|----------------|
| WB | 1:500 - 1:2000 |
| IHC-P | 1:50 - 1:200 |
| IF/ICC | 1:50 - 1:100 |

Immunogen Information

Gene ID

81631

Swiss Prot

Q9GZQ8

Immunogen

A synthetic peptide corresponding to a sequence within amino acids 1-100 of human LC3B (NP_073729.1).

Synonyms

LC3B; ATG8F; MAP1LC3B-a; MAP1A/1BLC3

Contact

| | |
|---|---------------------------|
| ☎ | 400-999-6126 |
| ✉ | cn.market@abclonal.com.cn |
| 🌐 | www.abclonal.com.cn |

Product Information

Source

Rabbit

Isotype

IgG

Purification

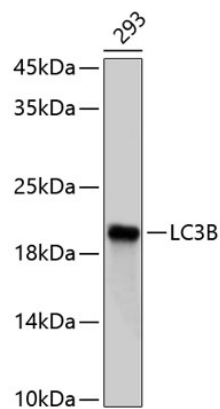
Affinity purification

Storage

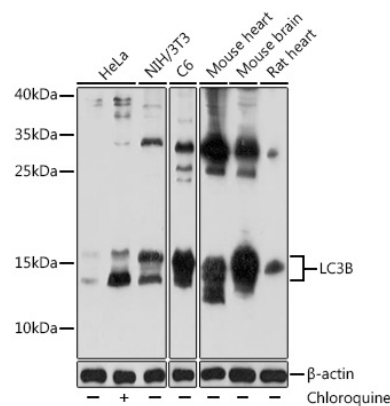
Store at -20°C. Avoid freeze / thaw cycles.

Buffer: PBS with 0.05% proclin300, 50% glycerol, pH7.3.

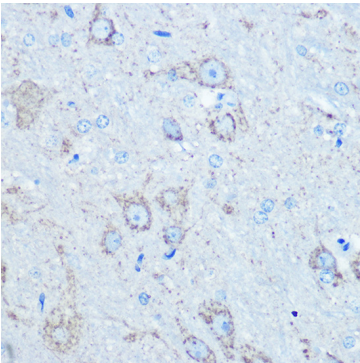
Validation Data



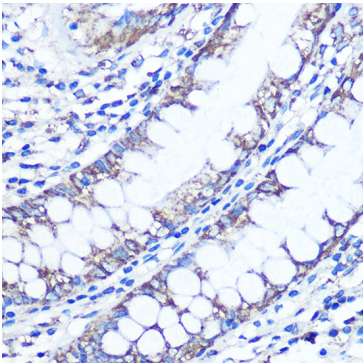
Western blot analysis of lysates from 293 cells, using LC3B Rabbit pAb (A11923).
Secondary antibody: HRP Goat Anti-Rabbit IgG (H+L) (AS014) at 1:10000 dilution.
Lysates/proteins: 25µg per lane.
Blocking buffer: 3% nonfat dry milk in TBST.



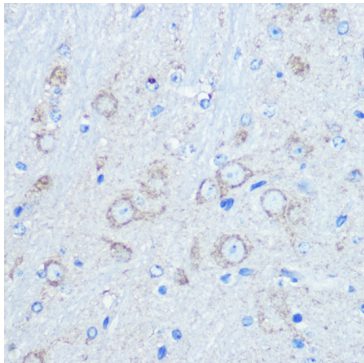
Western blot analysis of various lysates using LC3B Rabbit pAb (A11923) at 1:1000 dilution. HeLa cells were treated by Chloroquine (50 µM) at 37°C for 20 hours.
Secondary antibody: HRP Goat Anti-Rabbit IgG (H+L) (AS014) at 1:10000 dilution.
Lysates/proteins: 25µg per lane.
Blocking buffer: 3% BSA.
Detection: ECL Basic Kit (RM00020).
Exposure time: 60s.



Immunohistochemistry analysis of paraffin-embedded rat brain using LC3B Rabbit pAb (A11923) at dilution of 1:100 (40x lens). Perform microwave antigen retrieval with 10 mM PBS buffer pH 7.2 before commencing with IHC staining protocol.



Immunohistochemistry analysis of paraffin-embedded human colon using LC3B Rabbit pAb (A11923) at dilution of 1:100 (40x lens). Perform microwave antigen retrieval with 10 mM PBS buffer pH 7.2 before commencing with IHC staining protocol.



Immunohistochemistry analysis of paraffin-embedded mouse brain using LC3B Rabbit pAb (A11923) at dilution of 1:100 (40x lens). Perform microwave antigen retrieval with 10 mM PBS buffer pH 7.2 before commencing with IHC staining protocol.