

ASMT Rabbit pAb

Catalog No.: A11840

Basic Information

Observed MW

52kDa

Calculated MW

38kDa

Category

Primary antibody

Applications

WB, ELISA

Cross-Reactivity

Human

Background

This gene belongs to the methyltransferase superfamily, and is located in the pseudoautosomal region (PAR) at the end of the short arms of the X and Y chromosomes. The encoded enzyme catalyzes the final reaction in the synthesis of melatonin, and is abundant in the pineal gland. Alternatively spliced transcript variants have been noted for this gene.

Recommended Dilutions

WB 1:500 - 1:2000

ELISA Recommended starting concentration is 1 µg/mL. Please optimize the concentration based on your specific assay requirements.

Immunogen Information

Gene ID

438

Swiss Prot

P46597

Immunogen

Recombinant protein (or fragment). This information is considered to be commercially sensitive.

Synonyms

ASMTY; HIOMT; HIOMTY; ASMT

Contact

☎ | 400-999-6126

✉ | cn.market@abclonal.com.cn

🌐 | www.abclonal.com.cn

Product Information

Source

Rabbit

Isotype

IgG

Purification

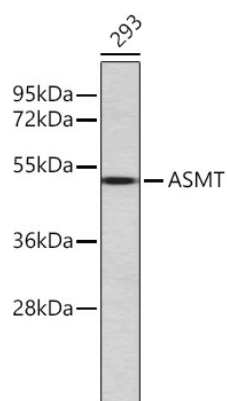
Affinity purification

Storage

Store at -20°C. Avoid freeze / thaw cycles.

Buffer: PBS with 0.01% thimerosal, 50% glycerol, pH 7.3.

Validation Data



Western blot analysis of lysates from 293 cells, using ASMT Rabbit pAb (A11840).
Secondary antibody: HRP-conjugated Goat anti-Rabbit IgG (H+L) (AS014) at 1:10000 dilution.
Lysates/proteins: 25µg per lane.
Blocking buffer: 3% nonfat dry milk in TBST.