

# Catalase Rabbit pAb

Catalog No.: A11777 **17 Publications**

## Basic Information

**Observed MW**

60kDa

**Calculated MW**

60kDa

**Category**

Primary antibody

**Applications**

WB, IHC-P, IF/ICC, ELISA

**Cross-Reactivity**

Human, Mouse, Rat

## Background

This gene encodes catalase, a key antioxidant enzyme in the body's defense against oxidative stress. Catalase is a heme enzyme that is present in the peroxisome of nearly all aerobic cells. Catalase converts the reactive oxygen species hydrogen peroxide to water and oxygen and thereby mitigates the toxic effects of hydrogen peroxide. Oxidative stress is hypothesized to play a role in the development of many chronic or late-onset diseases such as diabetes, asthma, Alzheimer's disease, systemic lupus erythematosus, rheumatoid arthritis, and cancers. Polymorphisms in this gene have been associated with decreases in catalase activity but, to date, acatalasemia is the only disease known to be caused by this gene.

## Recommended Dilutions

**WB** 1:500 - 1:2000**IHC-P** 1:50 - 1:100**IF/ICC** 1:50 - 1:100**ELISA** Recommended starting concentration is 1 µg/mL. Please optimize the concentration based on your specific assay requirements.

## Immunogen Information

**Gene ID**

847

**Swiss Prot**

P04040

**Immunogen**

Recombinant protein (or fragment). This information is considered to be commercially sensitive.

**Synonyms**

CAT; catalase; MGC138422; MGC138424; Catalase

## Contact

 | 400-999-6126 | [cn.market@abclonal.com.cn](mailto:cn.market@abclonal.com.cn) | [www.abclonal.com.cn](http://www.abclonal.com.cn)

## Product Information

**Source**

Rabbit

**Isotype**

IgG

**Purification**

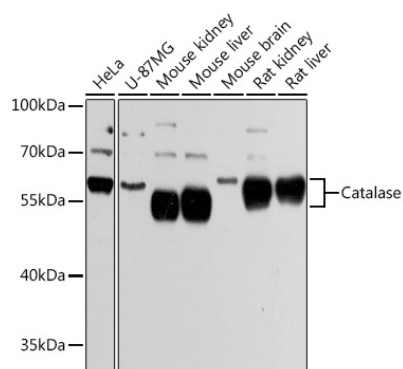
Affinity purification

**Storage**

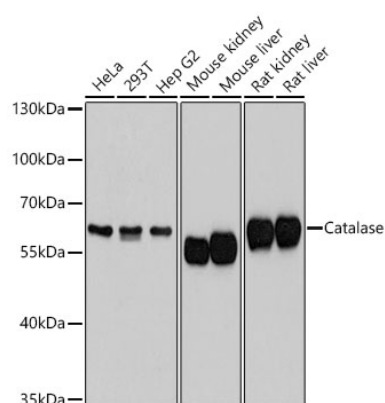
Store at -20°C. Avoid freeze / thaw cycles.

Buffer: PBS with 0.01% thimerosal, 50% glycerol, pH7.3.

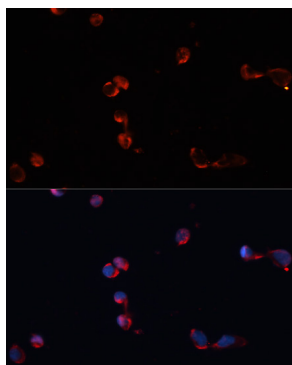
## Validation Data



Western blot analysis of various lysates using Catalase Rabbit pAb (A11777) at 1:3000 dilution.  
 Secondary antibody: HRP-conjugated Goat anti-Rabbit IgG (H+L) (AS014) at 1:10000 dilution.  
 Lysates/proteins: 25µg per lane.  
 Blocking buffer: 3% nonfat dry milk in TBST.  
 Detection: ECL Basic Kit (RM00020).  
 Exposure time: 5s.



Western blot analysis of various lysates using Catalase Rabbit pAb (A11777) at 1:3000 dilution.  
 Secondary antibody: HRP-conjugated Goat anti-Rabbit IgG (H+L) (AS014) at 1:10000 dilution.  
 Lysates / proteins: 25 µg per lane.  
 Blocking buffer: 3 % nonfat dry milk in TBST.  
 Detection: ECL Basic Kit (RM00020).  
 Exposure time: 10s.



Immunofluorescence analysis of HeLa cells using Catalase Rabbit pAb (A11777) at dilution of 1:100. Secondary antibody: Cy3-conjugated Goat anti-Rabbit IgG (H+L) (AS007) at 1:500 dilution. Blue: DAPI for nuclear staining.