

# SPTLC2 Rabbit pAb

Catalog No.: A11716 **1 Publications**

## Basic Information

### Observed MW

58kDa

### Calculated MW

63kDa

### Category

Primary antibody

### Applications

ELISA, WB

### Cross-Reactivity

Human, Mouse

## Background

This gene encodes a long chain base subunit of serine palmitoyltransferase. Serine palmitoyltransferase, which consists of two different subunits, is the key enzyme in sphingolipid biosynthesis. It catalyzes the pyridoxal-5-prime-phosphate-dependent condensation of L-serine and palmitoyl-CoA to 3-oxosphinganine. Mutations in this gene were identified in patients with hereditary sensory neuropathy type I.

## Recommended Dilutions

WB 1:500 - 1:2000

## Immunogen Information

### Gene ID

9517

### Swiss Prot

O15270

### Immunogen

Recombinant fusion protein containing a sequence corresponding to amino acids 423-562 of human SPTLC2 (NP\_004854.1).

### Synonyms

LCB2; SPT2; HSN1C; LCB2A; NSAN1C; hLCB2a; SPTLC2

## Contact

☎ | 400-999-6126

✉ | [cn.market@abclonal.com.cn](mailto:cn.market@abclonal.com.cn)

🌐 | [www.abclonal.com.cn](http://www.abclonal.com.cn)

## Product Information

### Source

Rabbit

### Isotype

IgG

### Purification

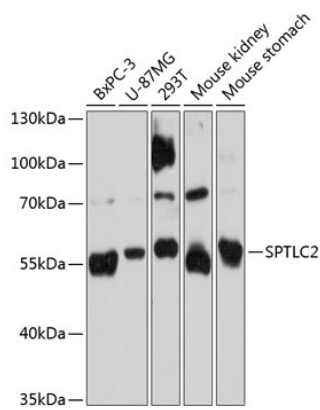
Affinity purification

### Storage

Store at -20°C. Avoid freeze / thaw cycles.

Buffer: PBS with 0.01% thimerosal, 50% glycerol, pH7.3.

# Validation Data



Western blot analysis of various lysates using SPTLC2 Rabbit pAb (A11716) at 1:3000 dilution.  
Secondary antibody: HRP Goat Anti-Rabbit IgG (H+L) (AS014) at 1:10000 dilution.  
Lysates/proteins: 25µg per lane.  
Blocking buffer: 3% nonfat dry milk in TBST.  
Detection: ECL Basic Kit (RM00020).  
Exposure time: 90s.