

HB-EGF Rabbit mAb

Catalog No.: A11657 **Recombinant** **1 Publications**

Basic Information

Observed MW

18kDa/21kDa/27kDa

Calculated MW

23kDa

Category

Primary antibody

Applications

WB, ELISA

Cross-Reactivity

Human, Mouse, Rat

CloneNo number

ARC0663

Background

Enables growth factor activity and heparin binding activity. Involved in several processes, including epidermal growth factor receptor signaling pathway; positive regulation of protein kinase B signaling; and positive regulation of wound healing. Located in cell surface and extracellular space. Implicated in glomerulosclerosis and perinatal necrotizing enterocolitis.

Recommended Dilutions

WB 1:1000 - 1:2000

ELISA Recommended starting concentration is 1 µg/mL. Please optimize the concentration based on your specific assay requirements.

Immunogen Information

Gene ID

1839

Swiss Prot

Q99075

Immunogen

Synthetic peptide. This information is considered to be commercially sensitive.

Synonyms

DTR; DTS; DTSF; HEGFL; HB-EGF

Contact

 | 400-999-6126

 | cn.market@abclonal.com.cn

 | www.abclonal.com.cn

Product Information

Source

Rabbit

Isotype

IgG

Purification

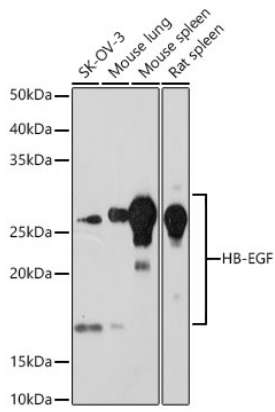
Affinity purification

Storage

Store at -20°C. Avoid freeze / thaw cycles.

Buffer: PBS containing 50% glycerol and 0.05% BSA, preserved with proclin300 or sodium azide (as specified on the Certificate of Analysis), pH 7.3.

Validation Data



Western blot analysis of various lysates using HB-EGF Rabbit mAb (A11657) at 1:1000 dilution.
Secondary antibody: HRP-conjugated Goat anti-Rabbit IgG (H+L) (AS014) at 1:10000 dilution.
Lysates/proteins: 25 μ g per lane.
Blocking buffer: 3% nonfat dry milk in TBST.
Detection: ECL Basic Kit (RM00020).
Exposure time: 90s.