

LAMTOR1 Rabbit pAb

Catalog No.: A11619 **3 Publications**

Basic Information

Observed MW

18kDa

Calculated MW

18kDa

Category

Primary antibody

Applications

WB,IF/ICC,ELISA

Cross-Reactivity

Human, Mouse, Rat

Background

Enables GTPase binding activity. Contributes to guanyl-nucleotide exchange factor activity and molecular adaptor activity. Involved in several processes, including cholesterol homeostasis; positive regulation of TOR signaling; and regulation of cholesterol transport. Located in lysosome. Part of Ragulator complex.

Recommended Dilutions

WB 1:500 - 1:1000

IF/ICC 1:50 - 1:100

ELISA Recommended starting concentration is 1 µg/mL. Please optimize the concentration based on your specific assay requirements.

Immunogen Information

Gene ID

55004

Swiss Prot

Q6IAA8

Immunogen

Recombinant protein (or fragment). This information is considered to be commercially sensitive.

Synonyms

p18; PDRO; C11orf59; p27RF-Rho; Ragulator1; LAMTOR1

Contact

☎ | 400-999-6126

✉ | cn.market@abclonal.com.cn

🌐 | www.abclonal.com.cn

Product Information

Source

Rabbit

Isotype

IgG

Purification

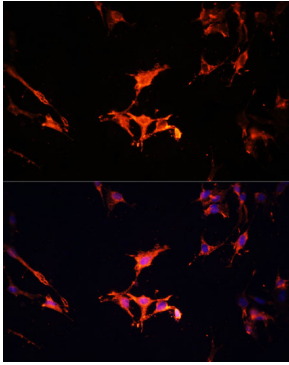
Affinity purification

Storage

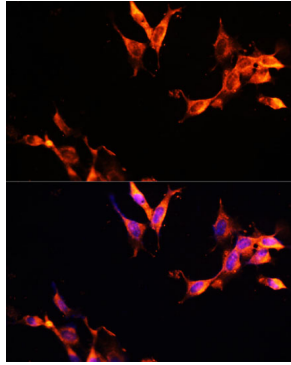
Store at -20°C. Avoid freeze / thaw cycles.

Buffer: PBS with 0.01% thimerosal, 50% glycerol, pH 7.3.

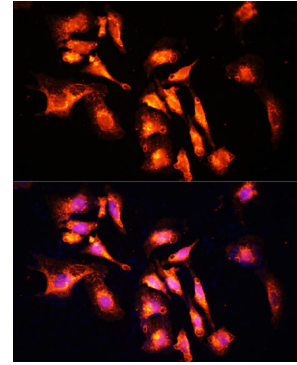
Validation Data



Immunofluorescence analysis of C6 cells using LAMTOR1 Rabbit pAb (A11619) at dilution of 1:100 (40x lens). Secondary antibody: Cy3-conjugated Goat anti-Rabbit IgG (H+L) (AS007) at 1:500 dilution. Blue: DAPI for nuclear staining.



Immunofluorescence analysis of NIH-3T3 cells using LAMTOR1 Rabbit pAb (A11619) at dilution of 1:100 (40x lens). Secondary antibody: Cy3-conjugated Goat anti-Rabbit IgG (H+L) (AS007) at 1:500 dilution. Blue: DAPI for nuclear staining.



Immunofluorescence analysis of U-2 OS cells using LAMTOR1 Rabbit pAb (A11619) at dilution of 1:100 (40x lens). Secondary antibody: Cy3-conjugated Goat anti-Rabbit IgG (H+L) (AS007) at 1:500 dilution. Blue: DAPI for nuclear staining.