

CHD4 Rabbit pAb

Catalog No.: A11574 **1 Publications**

Basic Information

Observed MW

280kDa

Calculated MW

218kDa

Category

Primary antibody

Applications

WB, IHC-P, IF/ICC, ELISA

Cross-Reactivity

Human, Mouse, Rat

Background

The product of this gene belongs to the SNF2/RAD54 helicase family. It represents the main component of the nucleosome remodeling and deacetylase complex and plays an important role in epigenetic transcriptional repression. Patients with dermatomyositis develop antibodies against this protein. Somatic mutations in this gene are associated with serous endometrial tumors. Alternative splicing results in multiple transcript variants encoding different isoforms.

Recommended Dilutions

WB 1:500 - 1:2000**IHC-P** 1:100 - 1:200**IF/ICC** 1:50 - 1:200

ELISA Recommended starting concentration is 1 µg/mL. Please optimize the concentration based on your specific assay requirements.

Immunogen Information

Gene ID

1108

Swiss Prot

Q14839

Immunogen

Recombinant protein (or fragment). This information is considered to be commercially sensitive.

Synonyms

CHD-4; Mi-2b; SIHIWES; Mi2-BETA; CHD4

Contact

 | 400-999-6126 | cn.market@abclonal.com.cn | www.abclonal.com.cn

Product Information

Source

Rabbit

Isotype

IgG

Purification

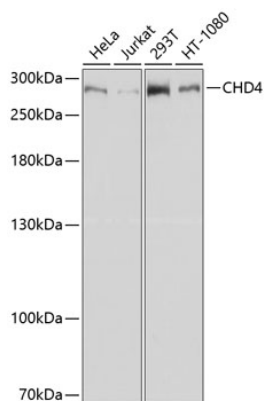
Affinity purification

Storage

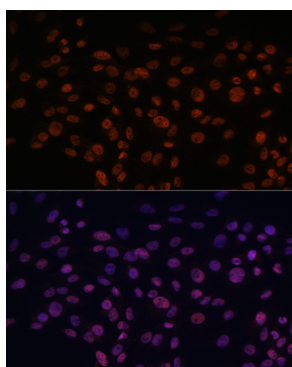
Store at -20°C. Avoid freeze / thaw cycles.

Buffer: PBS with 0.02% sodium azide, 50% glycerol, pH 7.3.

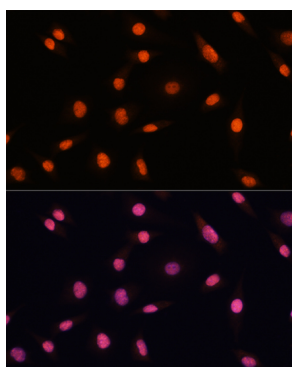
Validation Data



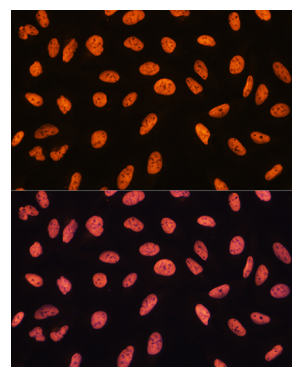
Western blot analysis of various lysates using CHD4 Rabbit pAb (A11574) at 1:1000 dilution. Secondary antibody: HRP-conjugated Goat anti-Rabbit IgG (H+L) (AS014) at 1:10000 dilution. Lysates/proteins: 25µg per lane. Blocking buffer: 3% nonfat dry milk in TBST. Detection: ECL Basic Kit (RM00020). Exposure time: 30s.



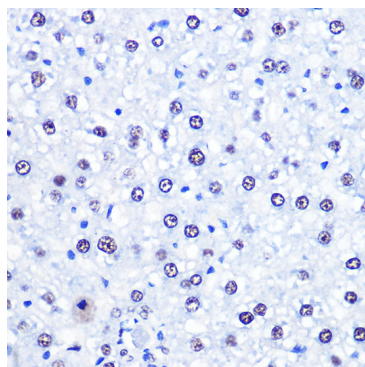
Immunofluorescence analysis of C6 cells using CHD4 Rabbit pAb (A11574) at dilution of 1:100. Blue: DAPI for nuclear staining.



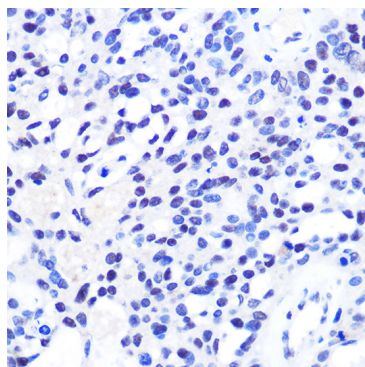
Immunofluorescence analysis of L929 cells using CHD4 Rabbit pAb (A11574) at dilution of 1:100. Blue: DAPI for nuclear staining.



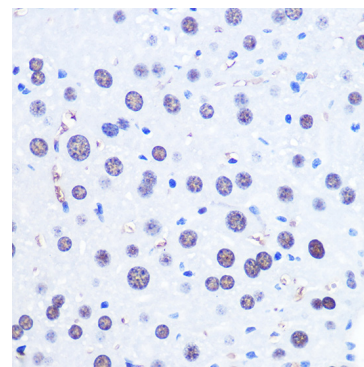
Immunofluorescence analysis of U20S cells using CHD4 Rabbit pAb (A11574) at dilution of 1:100. Blue: DAPI for nuclear staining.



Immunohistochemistry analysis of paraffin-embedded Rat liver using CHD4 Rabbit pAb (A11574) at dilution of 1:100 (40x lens). Microwave antigen retrieval performed with 0.01M PBS Buffer (pH 7.2) prior to IHC staining.



Immunohistochemistry analysis of paraffin-embedded Human oophoroma using CHD4 Rabbit pAb (A11574) at dilution of 1:100 (40x lens). Microwave antigen retrieval performed with 0.01M PBS Buffer (pH 7.2) prior to IHC staining.



Immunohistochemistry analysis of paraffin-embedded Mouse liver using CHD4 Rabbit pAb (A11574) at dilution of 1:100 (40x lens). Microwave antigen retrieval performed with 0.01M PBS Buffer (pH 7.2) prior to IHC staining.