

KDM1 Rabbit pAb

Catalog No.: A1156

5 Publications

Basic Information

Observed MW

117kDa

Calculated MW

93kDa

Category

Primary antibody

Applications

WB,IP,ELISA

Cross-Reactivity

Human, Mouse, Rat

Background

This gene encodes a nuclear protein containing a SWIRM domain, a FAD-binding motif, and an amine oxidase domain. This protein is a component of several histone deacetylase complexes, though it silences genes by functioning as a histone demethylase. Alternative splicing results in multiple transcript variants.

Recommended Dilutions

WB 1:500 - 1:2000

IP 0.5µg-4µg antibody for
200µg-400µg extracts of
whole cells

ELISA Recommended starting
concentration is 1 µg/mL.
Please optimize the
concentration based on
your specific assay
requirements.

Immunogen Information

Gene ID

23028

Swiss Prot

O60341

Immunogen

Recombinant protein (or fragment). This information is considered to be commercially sensitive.

Synonyms

AOF2; CPRF; KDM1; LSD1; BHC110

Contact

☎ | 400-999-6126

✉ | cn.market@abclonal.com.cn

🌐 | www.abclonal.com.cn

Product Information

Source

Rabbit

Isotype

IgG

Purification

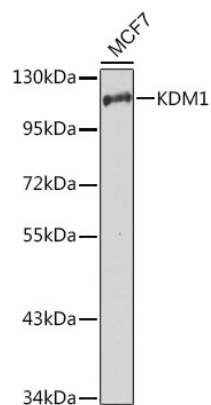
Affinity purification

Storage

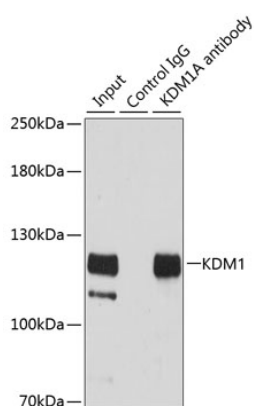
Store at -20°C. Avoid freeze / thaw cycles.

Buffer: PBS with 0.09% Sodium azide, 50% glycerol, pH7.3.

Validation Data



Western blot analysis of lysates from MCF7 cells, using KDM1 Rabbit pAb (A1156) at 1:1000 dilution.
Secondary antibody: HRP-conjugated Goat anti-Rabbit IgG (H+L) (AS014) at 1:10000 dilution.
Lysates/proteins: 25µg per lane.
Blocking buffer: 3% nonfat dry milk in TBST.
Detection: ECL Basic Kit (RM00020).



Immunoprecipitation analysis of 200 µg extracts of HeLa cells using 3 µg KDM1 antibody (A1156).
Western blot was performed from the immunoprecipitate using KDM1 antibody (A1156) at a dilution of 1:500.