

CELF1 Rabbit mAb

Catalog No.: A1150 **Recombinant**

Basic Information

Observed MW

52kDa

Calculated MW

52kDa

Category

Primary antibody

Applications

WB,IP,ELISA

Cross-Reactivity

Human, Mouse, Rat

CloneNo number

ARC1866

Background

Members of the CELF/BRUNOL protein family contain two N-terminal RNA recognition motif (RRM) domains, one C-terminal RRM domain, and a divergent segment of 160-230 aa between the second and third RRM domains. Members of this protein family regulate pre-mRNA alternative splicing and may also be involved in mRNA editing, and translation. This gene may play a role in myotonic dystrophy type 1 (DM1) via interactions with the dystrophin myotonic-protein kinase (DMPK) gene. Alternative splicing results in multiple transcript variants encoding different isoforms.

Recommended Dilutions

WB 1:500 - 1:2000

IP 0.5µg-4µg antibody for
200µg-400µg extracts of
whole cells

ELISA Recommended starting
concentration is 1 µg/mL.
Please optimize the
concentration based on
your specific assay
requirements.

Contact

☎ | 400-999-6126

✉ | cn.market@abclonal.com.cn

🌐 | www.abclonal.com.cn

Immunogen Information

Gene ID

10658

Swiss Prot

Q92879

Immunogen

Synthetic peptide. This information is considered to be commercially sensitive.

Synonyms

CUGBP; NAB50; NAPOR; CUG-BP; CUGBP1; hNab50; BRUNOL2; EDEN-BP; CELF1

Product Information

Source

Rabbit

Isotype

IgG

Purification

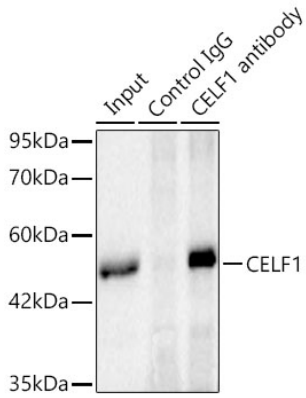
Affinity purification

Storage

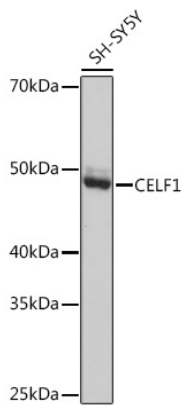
Store at -20°C. Avoid freeze / thaw cycles.

Buffer: PBS containing 50% glycerol and 0.05% BSA, preserved with proclin300 or sodium azide (as specified on the Certificate of Analysis), pH 7.3.

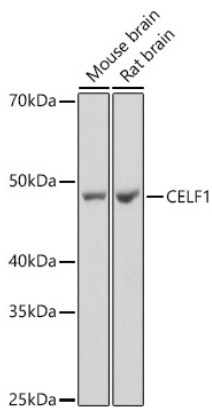
Validation Data



Immunoprecipitation of CELF1 from 200 μ g extracts of SH-SY5Y cells was performed using 0.5 μ g of CELF1 Rabbit mAb (A1150). Rabbit IgG isotype control(AC042) was used to precipitate the Control IgG sample. IP samples were eluted with 1X Laemmli Buffer. The Input lane represents 10% of the total input. Western blot analysis of immunoprecipitates was conducted using CELF1 Rabbit mAb (A1150) at a dilution of 1:1000.



Western blot analysis of lysates from SH-SY5Y cells, using CELF1 Rabbit mAb (A1150) at 1:1000 dilution. Secondary antibody: HRP-conjugated Goat anti-Rabbit IgG (H+L) (AS014) at 1:10000 dilution. Lysates/proteins: 25 μ g per lane. Blocking buffer: 3% nonfat dry milk in TBST. Detection: ECL Basic Kit (RM00020). Exposure time: 1s.



Western blot analysis of various lysates, using CELF1 Rabbit mAb (A1150) at 1:1000 dilution. Secondary antibody: HRP-conjugated Goat anti-Rabbit IgG (H+L) (AS014) at 1:10000 dilution. Lysates/proteins: 25 μ g per lane. Blocking buffer: 3% nonfat dry milk in TBST. Detection: ECL Basic Kit (RM00020). Exposure time: 3s.