

Lamin B1 Rabbit mAb

Catalog No.: A11495 **Recombinant** **25 Publications**

Basic Information

Observed MW

45kDa/70kDa

Calculated MW

66kDa

Category

Primary antibody

Applications

WB, IHC-P

Cross-Reactivity

Human, Mouse, Rat

CloneNo number

ARC0621

Background

This gene encodes one of the two B-type lamin proteins and is a component of the nuclear lamina. A duplication of this gene is associated with autosomal dominant adult-onset leukodystrophy (ADLD). Alternative splicing results in multiple transcript variants.

Recommended Dilutions

WB	1:1000 - 1:6000
IHC-P	1:200 - 1:2000

Immunogen Information

Gene ID

4001

Swiss Prot

P20700

Immunogen

Synthetic peptide. This information is considered to be commercially sensitive.

Synonyms

LMN; ADLD; LMN2; LMNB; MCPH26

Contact

 | 400-999-6126

 | cn.market@abclonal.com.cn

 | www.abclonal.com.cn

Product Information

Source

Rabbit

Isotype

IgG

Purification

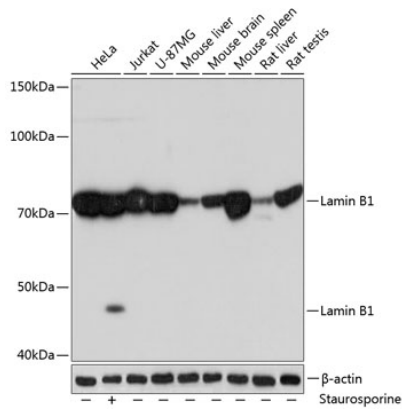
Affinity purification

Storage

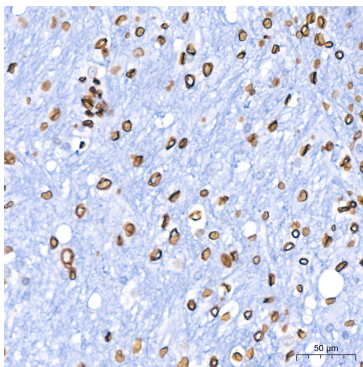
Store at -20°C. Avoid freeze / thaw cycles.

Buffer: PBS containing 50% glycerol and 0.05% BSA, preserved with proclin300 or sodium azide (as specified on the Certificate of Analysis), pH 7.3.

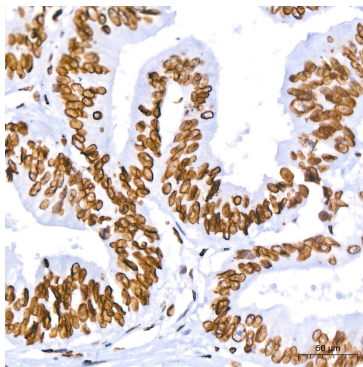
Validation Data



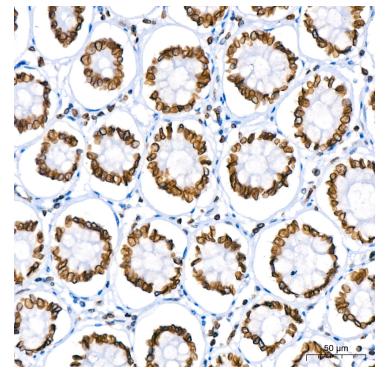
Western blot analysis of various lysates using Lamin B1 Rabbit mAb (A11495) at 1:1000 dilution. Secondary antibody: HRP-conjugated Goat anti-Rabbit IgG (H+L) (AS014) at 1:10000 dilution. Lysates/proteins: 25µg per lane. Blocking buffer: 3% nonfat dry milk in TBST. Detection: ECL Basic Kit (RM00020). Exposure time: 10s.



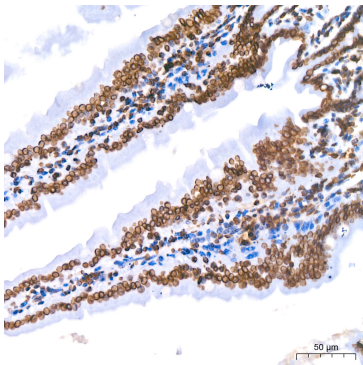
Immunohistochemistry analysis of paraffin-embedded Human brain using Lamin B1 Rabbit mAb (A11495) at dilution of 1:400 (40x lens). High pressure antigen retrieval performed with 0.01M Citrate buffer (pH 6.0) prior to IHC staining.



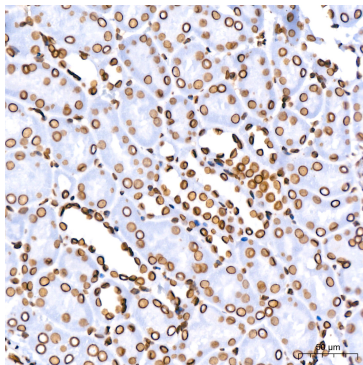
Immunohistochemistry analysis of paraffin-embedded Human colon carcinoma using Lamin B1 Rabbit mAb (A11495) at dilution of 1:400 (40x lens). High pressure antigen retrieval performed with 0.01M Citrate buffer (pH 6.0) prior to IHC staining.



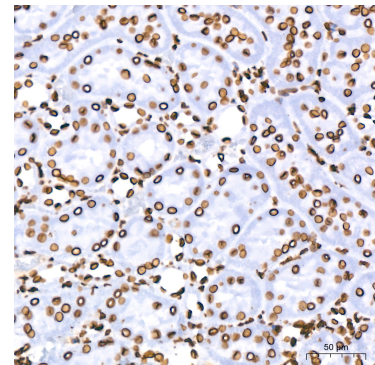
Immunohistochemistry analysis of paraffin-embedded Human colon using Lamin B1 Rabbit mAb (A11495) at dilution of 1:400 (40x lens). High pressure antigen retrieval performed with 0.01M Citrate buffer (pH 6.0) prior to IHC staining.



Immunohistochemistry analysis of paraffin-embedded Mouse colon using Lamin B1 Rabbit mAb (A11495) at dilution of 1:400 (40x lens). High pressure antigen retrieval performed with 0.01M Citrate buffer (pH 6.0) prior to IHC staining.

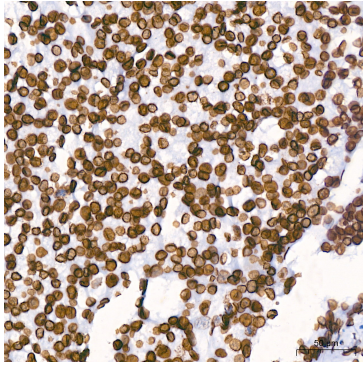


Immunohistochemistry analysis of paraffin-embedded Mouse kidney using Lamin B1 Rabbit mAb (A11495) at dilution of 1:400 (40x lens). High pressure antigen retrieval performed with 0.01M Citrate buffer (pH 6.0) prior to IHC staining.

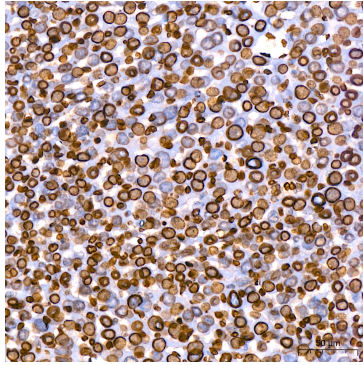


Immunohistochemistry analysis of paraffin-embedded Rat kidney using Lamin B1 Rabbit mAb (A11495) at dilution of 1:400 (40x lens). High pressure antigen retrieval performed with 0.01M Citrate buffer (pH 6.0) prior to IHC staining.

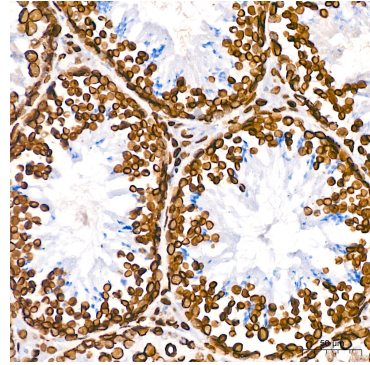
Validation Data



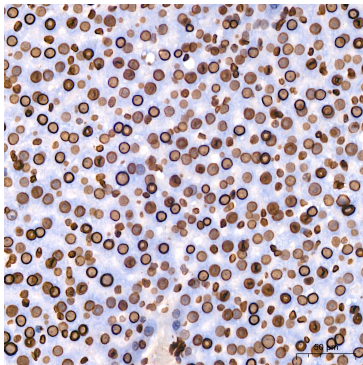
Immunohistochemistry analysis of paraffin-embedded Human liver cancer using Lamin B1 Rabbit mAb (A11495) at dilution of 1:200 (40x lens). High pressure antigen retrieval performed with 0.01M Citrate buffer (pH 6.0) prior to IHC staining.



Immunohistochemistry analysis of paraffin-embedded Mouse liver using Lamin B1 Rabbit mAb (A11495) at dilution of 1:200 (40x lens). High pressure antigen retrieval performed with 0.01M Citrate buffer (pH 6.0) prior to IHC staining.



Immunohistochemistry analysis of paraffin-embedded Mouse testis using Lamin B1 Rabbit mAb (A11495) at dilution of 1:200 (40x lens). High pressure antigen retrieval performed with 0.01M Citrate buffer (pH 6.0) prior to IHC staining.



Immunohistochemistry analysis of paraffin-embedded Rat liver using Lamin B1 Rabbit mAb (A11495) at dilution of 1:200 (40x lens). High pressure antigen retrieval performed with 0.01M Citrate buffer (pH 6.0) prior to IHC staining.