

p47phox/NCF1 Rabbit pAb

Catalog No.: A1148 **7 Publications**

Basic Information

Observed MW

47kDa/

Calculated MW

45kDa

Category

Primary antibody

Applications

WB,IF/ICC,IP,ELISA

Cross-Reactivity

Human, Mouse, Rat

Background

The protein encoded by this gene is a 47 kDa cytosolic subunit of neutrophil NADPH oxidase. This oxidase is a multicomponent enzyme that is activated to produce superoxide anion. Mutations in this gene have been associated with chronic granulomatous disease.

Recommended Dilutions

WB 1:500 - 1:1000

IF/ICC 1:50 - 1:100

IP 0.5µg-4µg antibody for
200µg-400µg extracts of
whole cells

ELISA Recommended starting
concentration is 1 µg/mL.
Please optimize the
concentration based on
your specific assay
requirements.

Immunogen Information

Gene ID

653361

Swiss Prot

P14598

Immunogen

Recombinant protein (or fragment). This information is considered to be commercially sensitive.

Synonyms

CGD1; NCF1A; NOXO2; p47phox; SH3PXD1A; p47phox/NCF1

Contact

 | 400-999-6126

 | cn.market@abclonal.com.cn

 | www.abclonal.com.cn

Product Information

Source

Rabbit

Isotype

IgG

Purification

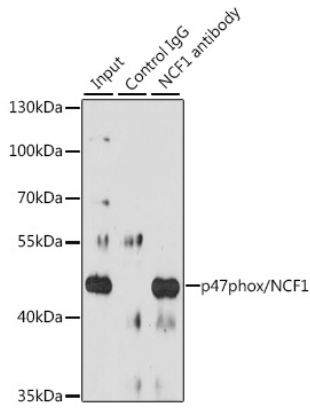
Affinity purification

Storage

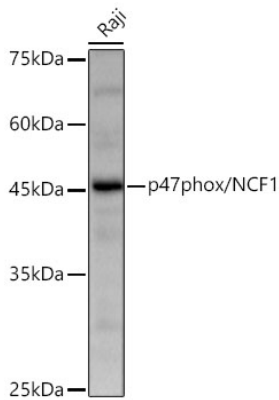
Store at -20°C. Avoid freeze / thaw cycles.

Buffer: PBS containing 50% glycerol, preserved with proclin300 or sodium azide (as specified on the Certificate of Analysis), pH 7.3.

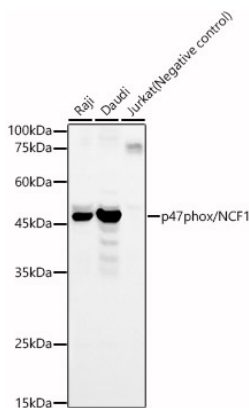
Validation Data



Immunoprecipitation analysis of 200 µg extracts of Raji cells, using 3 µg p47phox/NCF1 antibody (A1148). Western blot was performed from the immunoprecipitate using p47phox/NCF1 antibody (A1148) at a dilution of 1:1000.



Western blot analysis of lysates from Raji cells using p47phox/NCF1 Rabbit pAb (A1148) at 1:1000 dilution.
Secondary antibody: HRP-conjugated Goat anti-Rabbit IgG (H+L) (AS014) at 1:10000 dilution.
Lysates/proteins: 25 µg per lane.
Blocking buffer: 3% nonfat dry milk in TBST.
Detection: ECL Basic Kit (RM00020).
Exposure time:10s.



Western blot analysis of various lysates, using p47phox/NCF1 Rabbit pAb (A1148) at 1:400 dilution.
Secondary antibody: HRP-conjugated Goat anti-Rabbit IgG (H+L) (AS014) at 1:10000 dilution.
Lysates/proteins: 25µg per lane.
Blocking buffer: 3% nonfat dry milk in TBST.
Detection: ECL Basic Kit (RM00020).
Exposure time: 180s.