

# RAC2 Rabbit pAb

Catalog No.: A1139

3 Publications

## Basic Information

**Observed MW**

21kDa

**Calculated MW**

21kDa

**Category**

Primary antibody

**Applications**

WB, IHC-P, IF/ICC, ELISA

**Cross-Reactivity**

Human, Mouse, Rat

## Background

This gene encodes a member of the Ras superfamily of small guanosine triphosphate (GTP)-metabolizing proteins. The encoded protein localizes to the plasma membrane, where it regulates diverse processes, such as secretion, phagocytosis, and cell polarization. Activity of this protein is also involved in the generation of reactive oxygen species. Mutations in this gene are associated with neutrophil immunodeficiency syndrome. There is a pseudogene for this gene on chromosome 6.

## Recommended Dilutions

**WB** 1:500 - 1:2000**IHC-P** 1:50 - 1:100**IF/ICC** 1:50 - 1:100

**ELISA** Recommended starting concentration is 1 µg/mL. Please optimize the concentration based on your specific assay requirements.

## Immunogen Information

**Gene ID**

5880

**Swiss Prot**

P15153

**Immunogen**

Synthetic peptide. This information is considered to be commercially sensitive.

**Synonyms**

Gx; EN-7; IMD73A; IMD73B; IMD73C; HSPC022; p21-Rac2; RAC2

## Contact

 | 400-999-6126 | [cn.market@abclonal.com.cn](mailto:cn.market@abclonal.com.cn) | [www.abclonal.com.cn](http://www.abclonal.com.cn)

## Product Information

**Source**

Rabbit

**Isotype**

IgG

**Purification**

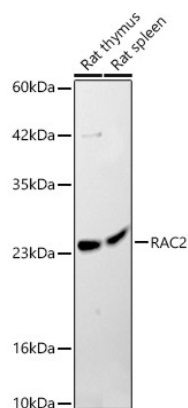
Affinity purification

**Storage**

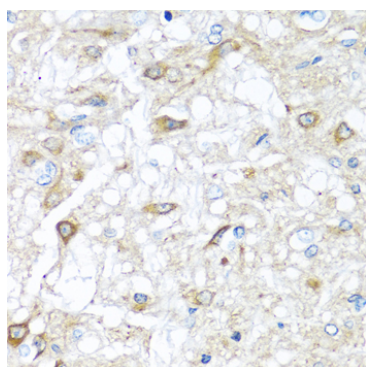
Store at -20°C. Avoid freeze / thaw cycles.

Buffer: PBS containing 50% glycerol, preserved with proclin300 or sodium azide (as specified on the Certificate of Analysis), pH 7.3.

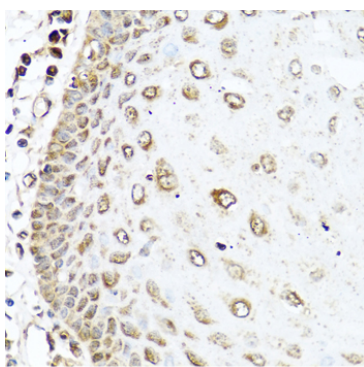
## Validation Data



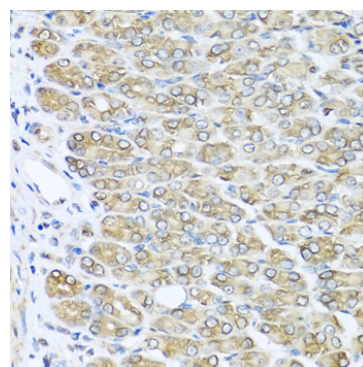
Western blot analysis of various lysates, using RAC2 Rabbit pAb (A1139) at 1:1000 dilution.  
Secondary antibody: HRP-conjugated Goat anti-Rabbit IgG (H+L) (AS014) at 1:10000 dilution.  
Lysates/proteins: 25µg per lane.  
Blocking buffer: 3% nonfat dry milk in TBST.  
Detection: ECL Basic Kit (RM00020).  
Exposure time: 180s.



Immunohistochemistry analysis of paraffin-embedded Rat brain using RAC2 Rabbit pAb (A1139) at dilution of 1:100 (40x lens). Microwave antigen retrieval performed with 0.01M PBS Buffer (pH 7.2) prior to IHC staining.



Immunohistochemistry analysis of paraffin-embedded Human esophagus using RAC2 Rabbit pAb (A1139) at dilution of 1:100 (40x lens). Microwave antigen retrieval performed with 0.01M PBS Buffer (pH 7.2) prior to IHC staining.



Immunohistochemistry analysis of paraffin-embedded Mouse stomach using RAC2 Rabbit pAb (A1139) at dilution of 1:100 (40x lens). Microwave antigen retrieval performed with 0.01M PBS Buffer (pH 7.2) prior to IHC staining.