

# EGFR Rabbit pAb

Catalog No.: A11352 **2 Publications**

## Basic Information

**Observed MW**

175kDa

**Calculated MW**

134kDa

**Category**

Primary antibody

**Applications**

ELISA, WB, IP, IF/ICC

**Cross-Reactivity**

Human, Mouse, Rat

## Background

The protein encoded by this gene is a transmembrane glycoprotein that is a member of the protein kinase superfamily. This protein is a receptor for members of the epidermal growth factor family. EGFR is a cell surface protein that binds to epidermal growth factor, thus inducing receptor dimerization and tyrosine autophosphorylation leading to cell proliferation. Mutations in this gene are associated with lung cancer. EGFR is a component of the cytokine storm which contributes to a severe form of Coronavirus Disease 2019 (COVID-19) resulting from infection with severe acute respiratory syndrome coronavirus-2 (SARS-CoV-2).

## Recommended Dilutions

**WB** 1:500 - 1:1000**IP** 0.5µg-4µg antibody for  
200µg-400µg extracts of  
whole cells**IF/ICC** 1:50 - 1:200

## Immunogen Information

**Gene ID**

1956

**Swiss Prot**

P00533

**Immunogen**

Recombinant fusion protein containing a sequence corresponding to amino acids 1021-1210 of human EGFR (NP\_005219.2).

**Synonyms**

ERBB; ERBP; HER1; mENA; ERBB1; PIG61; NISBD2; EGFR

## Contact

 | 400-999-6126 | [cn.market@abclonal.com.cn](mailto:cn.market@abclonal.com.cn) | [www.abclonal.com.cn](http://www.abclonal.com.cn)

## Product Information

**Source**

Rabbit

**Isotype**

IgG

**Purification**

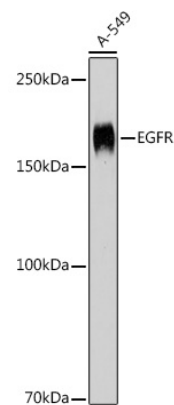
Affinity purification

**Storage**

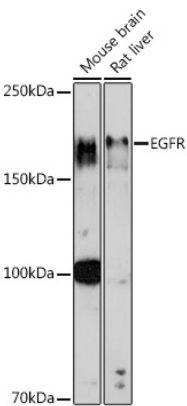
Store at -20°C. Avoid freeze / thaw cycles.

Buffer: PBS with 0.02% sodium azide, 50% glycerol, pH 7.3.

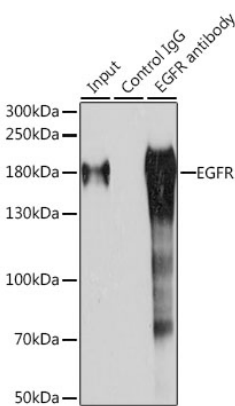
Validation Data



Western blot analysis of lysates from A-549 cells, using EGFR Rabbit pAb (A11352) at 1:1000 dilution.  
Secondary antibody: HRP Goat Anti-Rabbit IgG (H+L) (AS014) at 1:10000 dilution.  
Lysates/proteins: 25µg per lane.  
Blocking buffer: 3% nonfat dry milk in TBST.  
Detection: ECL Basic Kit (RM00020).  
Exposure time: 30s.

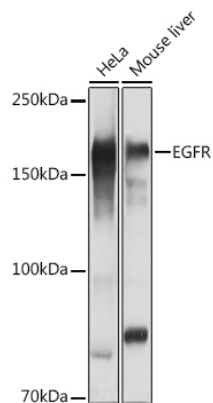


Western blot analysis of various lysates using EGFR Rabbit pAb (A11352) at 1:1000 dilution.  
Secondary antibody: HRP Goat Anti-Rabbit IgG (H+L) (AS014) at 1:10000 dilution.  
Lysates/proteins: 25µg per lane.  
Blocking buffer: 3% nonfat dry milk in TBST.  
Detection: ECL Enhanced Kit (RM00021).  
Exposure time: 180s.

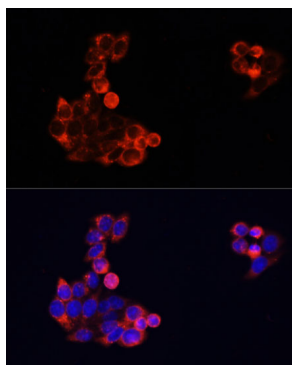


Immunoprecipitation analysis of 200 µg extracts of HeLa cells, using 3 µg EGFR antibody (A11352).  
Western blot was performed from the immunoprecipitate using EGFR antibody (A11352) at a dilution of 1:1000.

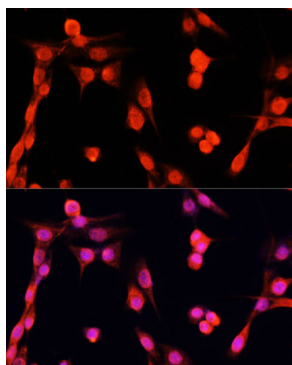
## Validation Data



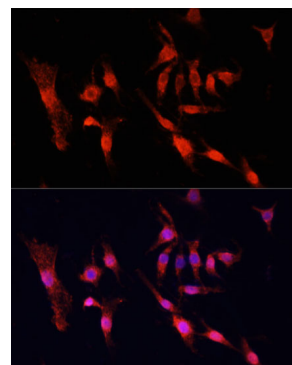
Western blot analysis of various lysates using EGFR Rabbit pAb (A11352) at 1:1000 dilution. Secondary antibody: HRP Goat Anti-Rabbit IgG (H+L) (AS014) at 1:10000 dilution. Lysates/proteins: 25µg per lane. Blocking buffer: 3% nonfat dry milk in TBST. Detection: ECL Basic Kit (RM00020). Exposure time: 1s.



Immunofluorescence analysis of HeLa cells using EGFR Rabbit pAb (A11352) at dilution of 1:100. Secondary antibody: Cy3 Goat Anti-Rabbit IgG (H+L) (AS007) at 1:500 dilution. Blue: DAPI for nuclear staining.



Immunofluorescence analysis of NIH/3T3 cells using EGFR Rabbit pAb (A11352) at dilution of 1:100. Secondary antibody: Cy3 Goat Anti-Rabbit IgG (H+L) (AS007) at 1:500 dilution. Blue: DAPI for nuclear staining.



Immunofluorescence analysis of PC12 cells using EGFR Rabbit pAb (A11352) at dilution of 1:100. Secondary antibody: Cy3 Goat Anti-Rabbit IgG (H+L) (AS007) at 1:500 dilution. Blue: DAPI for nuclear staining.