

CTCF Rabbit pAb

Catalog No.: A1133SP

Basic Information

Observed MW

140 kDa

Calculated MW

46 kDa/83 kDa

Category

Primary antibody

Applications

WB, IP, IF/ICC, IHC-P, ChIP, ELISA

Cross-Reactivity

Human, Mouse, Rat

Background

This gene is a member of the BORIS + CTCF gene family and encodes a transcriptional regulator protein with 11 highly conserved zinc finger (ZF) domains. This nuclear protein is able to use different combinations of the ZF domains to bind different DNA target sequences and proteins. Depending upon the context of the site, the protein can bind a histone acetyltransferase (HAT)-containing complex and function as a transcriptional activator or bind a histone deacetylase (HDAC)-containing complex and function as a transcriptional repressor. If the protein is bound to a transcriptional insulator element, it can block communication between enhancers and upstream promoters, thereby regulating imprinted expression. Mutations in this gene have been associated with invasive breast cancers, prostate cancers, and Wilms' tumors. Alternatively spliced transcript variants encoding different isoforms have been found for this gene.

Recommended Dilutions

WB 1:1000 - 1:2000

IP 0.5 µg - 4 µg antibody for
200 µg - 400 µg extracts
of whole cells

IF/ICC 1:100 - 1:200

IHC-P 1:100 - 1:200

ChIP 3µg antibody for
10µg-15µg of Chromatin

ELISA Recommended starting concentration is 1 µg/mL. Please optimize the concentration based on your specific assay requirements. For high-ratio antibody dilutions ($\geq 1:10000$) a sequential dilution method is strongly recommended to ensure measurement accuracy.

Immunogen Information

Gene ID

10664

Swiss Prot

P49711

Immunogen

This information is considered to be commercially sensitive.

Synonyms

MRD21; FAP108; CFAP108; CTCF

Product Information

Source

Rabbit

Isotype

IgG

Purification

Affinity purification

Storage

Store at -20°C. Avoid freeze / thaw cycles.

Buffer: PBS, pH 7.3, containing 50% glycerol. Preserved with Proclin300 or sodium azide. May contain 0.05% BSA as specified on the Certificate of Analysis.

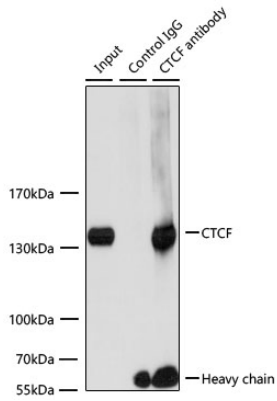
Contact

 | 400-999-6126

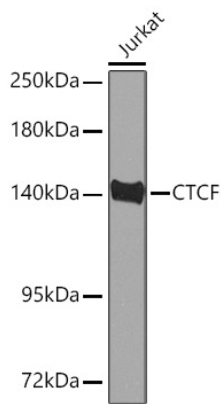
 | cn.market@abclonal.com.cn

 | www.abclonal.com.cn

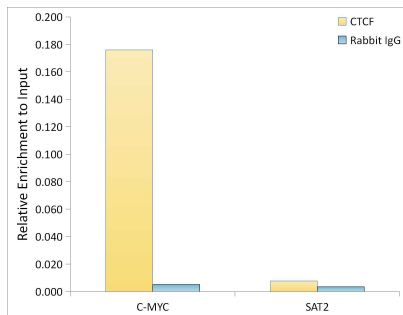
Validation Data



Immunoprecipitation of CTCF from 200 μ g extracts of Jurkat cells was performed using 3 μ g of CTCF Rabbit pAb (A1133SP). Rabbit Control IgG (AC005) was used to precipitate the Control IgG sample. IP samples were eluted with 1x Laemmli Buffer. The Input lane represents 10% of the total input. Western blot analysis of immunoprecipitates was conducted using CTCF Rabbit pAb (A1133SP) at a dilution of 1:1000.

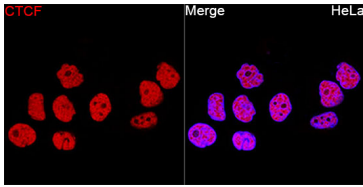


Western blot analysis of lysates from Jurkat cells using CTCF Rabbit pAb (A1133SP) at 1:1000 dilution incubated overnight at 4°C.
Secondary antibody: HRP-conjugated Goat anti-Rabbit IgG (H+L) (AS014) at 1:10000 dilution.
Lysates/proteins: 25 μ g per lane.
Blocking buffer: 3% nonfat dry milk in TBST.
Detection: ECL Basic Kit (RM00020).
Exposure time: 30 s.



Chromatin immunoprecipitation was performed with 15 μ g of cross-linked chromatin from 293T, using 3 μ g of CTCF Rabbit pAb (A1133SP) and Rabbit IgG isotype control (AC042). The enrichment of immunoprecipitated DNA at different genomic loci was examined by quantitative PCR. The histogram compares the ratio of the immunoprecipitated DNA to the input at given loci.

Validation Data



Immunofluorescence analysis of HeLa cells using CTCF Rabbit pAb (A1133SP) at a dilution of 1:100 (40x lens). Secondary antibody: Cy3-conjugated Goat anti-Rabbit IgG (H+L) (AS007) at 1:500 dilution. Blue: DAPI for nuclear staining.