

CTCF Rabbit pAb

Catalog No.: A1133

12 Publications

Basic Information

Observed MW

130 kDa

Calculated MW

83kDa

Category

Primary antibody

Applications

WB,IP,IF/ICC,IHC-P,ChIP,ELISA

Cross-Reactivity

Human, Mouse, Rat

Background

This gene is a member of the BORIS + CTCF gene family and encodes a transcriptional regulator protein with 11 highly conserved zinc finger (ZF) domains. This nuclear protein is able to use different combinations of the ZF domains to bind different DNA target sequences and proteins. Depending upon the context of the site, the protein can bind a histone acetyltransferase (HAT)-containing complex and function as a transcriptional activator or bind a histone deacetylase (HDAC)-containing complex and function as a transcriptional repressor. If the protein is bound to a transcriptional insulator element, it can block communication between enhancers and upstream promoters, thereby regulating imprinted expression. Mutations in this gene have been associated with invasive breast cancers, prostate cancers, and Wilms' tumors. Alternatively spliced transcript variants encoding different isoforms have been found for this gene.

Recommended Dilutions

WB 1:500 - 1:5000

IP 0.5µg-4µg antibody for
200µg-400µg extracts of
whole cells

IF/ICC 1:50 - 1:200

IHC-P 1:50 - 1:200

ChIP 5µg antibody for
10µg-15µg of Chromatin

ELISA Recommended starting
concentration is 1 µg/mL.
Please optimize the
concentration based on
your specific assay
requirements.

Immunogen Information

Gene ID

10664

Swiss Prot

P49711

Immunogen

Recombinant protein (or fragment). This information is considered to be commercially sensitive.

Synonyms

MRD21; FAP108; CFAP108; CTCF

Product Information

Source

Rabbit

Isotype

IgG

Purification

Affinity purification

Storage

Store at -20°C. Avoid freeze / thaw cycles.

Buffer: PBS containing 50% glycerol, preserved with proclin300 or sodium azide (as specified on the Certificate of Analysis), pH 7.3.

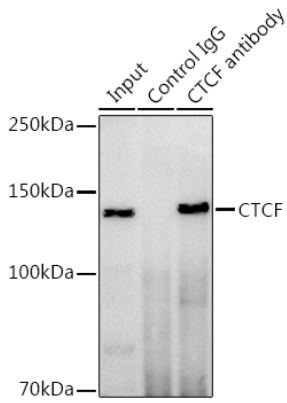
Contact

 | 400-999-6126

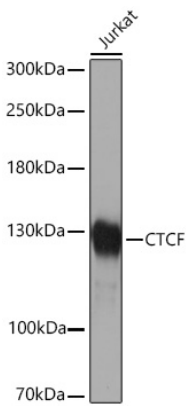
 | cn.market@abclonal.com.cn

 | www.abclonal.com.cn

Validation Data



Immunoprecipitation analysis of 300 µg extracts of HeLa cells using 3 µg CTCF antibody (A1133). Western blot was performed from the immunoprecipitate using CTCF antibody (A1133) at a dilution of 1:500.



Western blot analysis of lysates from Jurkat cells using CTCF Rabbit pAb (A1133) at 1:1000 dilution incubated overnight at 4°C.

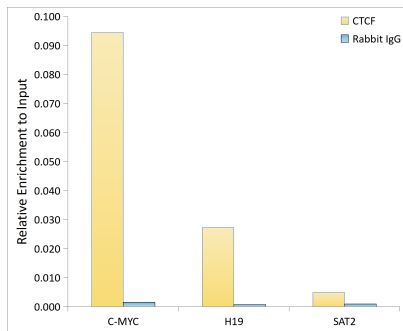
Secondary antibody: HRP-conjugated Goat anti-Rabbit IgG (H+L) (AS014) at 1:10000 dilution.

Lysates/proteins: 25 µg per lane.

Blocking buffer: 3% nonfat dry milk in TBST.

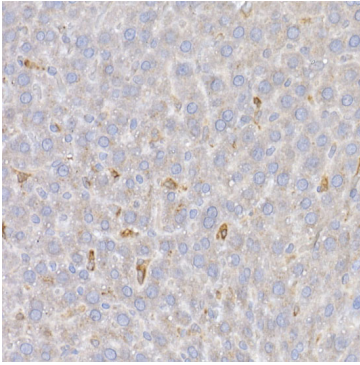
Detection: ECL Basic Kit (RM00020).

Exposure time: 10 s.

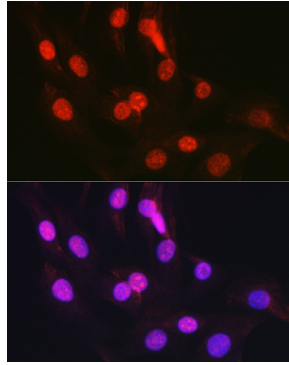


Chromatin immunoprecipitation analysis of extracts of HeLa cells, using CTCF antibody (A1133) and rabbit IgG. The amount of immunoprecipitated DNA was checked by quantitative PCR. Histogram was constructed by the ratios of the immunoprecipitated DNA to the input.

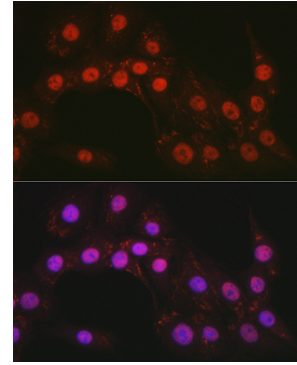
Validation Data



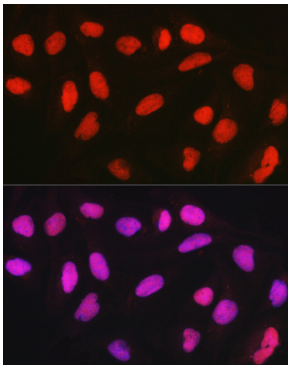
Immunohistochemistry analysis of paraffin-embedded Human colon carcinoma using CTCF Rabbit pAb (A1133) at dilution of 1:50 (40x lens). High pressure antigen retrieval performed with 0.01M Citrate buffer (pH 6.0) prior to IHC staining.



Immunofluorescence analysis of NIH/3T3 cells using CTCF Rabbit pAb (A1133) at dilution of 1:50 (40x lens). Secondary antibody: Cy3-conjugated Goat anti-Rabbit IgG (H+L) (AS007) at 1:500 dilution. Blue: DAPI for nuclear staining.



Immunofluorescence analysis of PC-12 cells using CTCF Rabbit pAb (A1133) at dilution of 1:50 (40x lens). Secondary antibody: Cy3-conjugated Goat anti-Rabbit IgG (H+L) (AS007) at 1:500 dilution. Blue: DAPI for nuclear staining.



Immunofluorescence analysis of U2OS cells using CTCF Rabbit pAb (A1133) at dilution of 1:50 (40x lens). Secondary antibody: Cy3-conjugated Goat anti-Rabbit IgG (H+L) (AS007) at 1:500 dilution. Blue: DAPI for nuclear staining.