

Dot1L/KMT4 Rabbit pAb

Catalog No.: A11285 **2 Publications**

Basic Information

Observed MW

185kDa

Calculated MW

165kDa

Category

Primary antibody

Applications

WB, ELISA

Cross-Reactivity

Rat, Mouse

Background

The protein encoded by this gene is a histone methyltransferase that methylates lysine-79 of histone H3. It is inactive against free core histones, but shows significant histone methyltransferase activity against nucleosomes.

Recommended Dilutions

WB 1:100 - 1:500

ELISA Recommended starting concentration is 1 µg/mL. Please optimize the concentration based on your specific assay requirements.

Immunogen Information

Gene ID

84444

Swiss Prot

Q8TEK3

Immunogen

Recombinant protein (or fragment). This information is considered to be commercially sensitive.

Synonyms

DOT1; KMT4; Dot1L/KMT4

Contact

☎ | 400-999-6126

✉ | cn.market@abclonal.com.cn

🌐 | www.abclonal.com.cn

Product Information

Source

Rabbit

Isotype

IgG

Purification

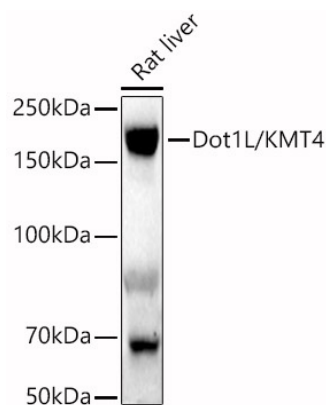
Affinity purification

Storage

Store at -20°C. Avoid freeze / thaw cycles.

Buffer: PBS containing 50% glycerol, preserved with proclin300 or sodium azide (as specified on the Certificate of Analysis), pH 7.3.

Validation Data



Western blot analysis of lysates from Rat liver, using Dot1L/KMT4 Rabbit pAb (A11285) at 1:400 dilution.
Secondary antibody: HRP-conjugated Goat anti-Rabbit IgG (H+L) (AS014) at 1:10000 dilution.
Lysates/proteins: 25µg per lane.
Blocking buffer: 3% nonfat dry milk in TBST.
Detection: ECL Enhanced Kit (RM00021).
Exposure time: 180s.