

[KD Validated] LC3B Rabbit pAb

Catalog No.: A11280 **7 Publications**

Basic Information

Observed MW

14kDa/16kDa

Calculated MW

15kDa

Category

Primary antibody

Applications

ELISA, WB, IHC-P, IF/ICC

Cross-Reactivity

Human, Mouse, Rat

Background

The product of this gene is a subunit of neuronal microtubule-associated MAP1A and MAP1B proteins, which are involved in microtubule assembly and important for neurogenesis. Studies on the rat homolog implicate a role for this gene in autophagy, a process that involves the bulk degradation of cytoplasmic component.

Recommended Dilutions

WB	1:500 - 1:1000
IHC-P	1:50 - 1:200
IF/ICC	1:50 - 1:200

Immunogen Information

Gene ID

81631

Swiss Prot

Q9GZQ8

Immunogen

Recombinant fusion protein containing a sequence corresponding to amino acids 1-100 of human LC3B (NP_073729.1).

Synonyms

LC3B; ATG8F; MAP1LC3B-a; MAP1A/1BLC3; 3B

Contact

☎	400-999-6126
✉	cn.market@abclonal.com.cn
🌐	www.abclonal.com.cn

Product Information

Source

Rabbit

Isotype

IgG

Purification

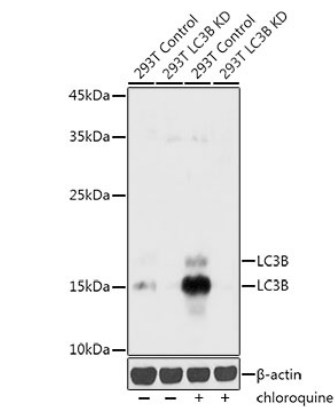
Affinity purification

Storage

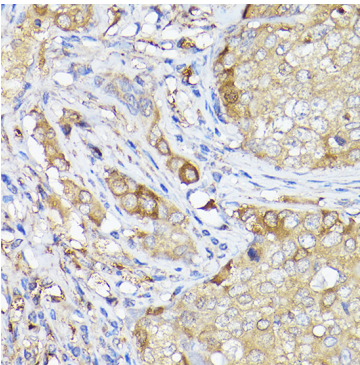
Store at -20°C. Avoid freeze / thaw cycles.

Buffer: PBS with 0.01% thimerosal, 50% glycerol, pH7.3.

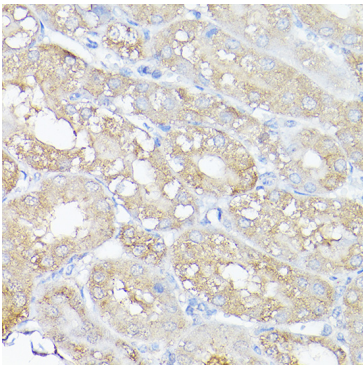
Validation Data



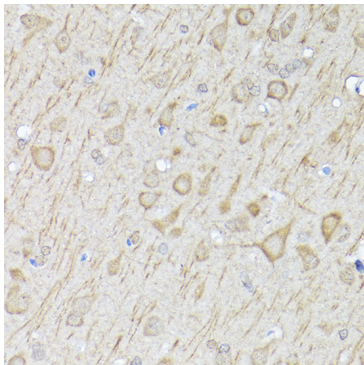
Western blot analysis of lysates from wild type (WT) and LC3B knockdown (KD) 293T cells, using [KD Validated] LC3B Rabbit pAb (A11280) at 1:1000 dilution. 293T cells were treated by Chloroquine (50 μ M) at 37°C for 20 hours.
Secondary antibody: HRP Goat Anti-Rabbit IgG (H+L) (AS014) at 1:10000 dilution.
Lysates/proteins: 25 μ g per lane.
Blocking buffer: 3% nonfat dry milk in TBST.
Detection: ECL Basic Kit (RM00020).
Exposure time: 60s.



Immunohistochemistry analysis of LC3B in paraffin-embedded human breast cancer using [KD Validated] LC3B Rabbit pAb (A11280) at dilution of 1:100 (40x lens). Perform high pressure antigen retrieval with 10 mM citrate buffer pH 6.0 before commencing with IHC staining protocol.



Immunohistochemistry analysis of LC3B in paraffin-embedded mouse kidney using [KD Validated] LC3B Rabbit pAb (A11280) at dilution of 1:100 (40x lens). Perform high pressure antigen retrieval with 10 mM citrate buffer pH 6.0 before commencing with IHC staining protocol.



Immunohistochemistry analysis of LC3B in paraffin-embedded rat brain using [KD Validated] LC3B Rabbit pAb (A11280) at dilution of 1:100 (40x lens). Perform high pressure antigen retrieval with 10 mM citrate buffer pH 6.0 before commencing with IHC staining protocol.