

PD-L1/CD274 Rabbit pAb

Catalog No.: A11273

4 Publications

Basic Information

Observed MW

40-50kDa

Calculated MW

33kDa

Category

Primary antibody

Applications

ELISA, WB, IHC-P

Cross-Reactivity

Human, Mouse, Rat

Background

This gene encodes an immune inhibitory receptor ligand that is expressed by hematopoietic and non-hematopoietic cells, such as T cells and B cells and various types of tumor cells. The encoded protein is a type I transmembrane protein that has immunoglobulin V-like and C-like domains. Interaction of this ligand with its receptor inhibits T-cell activation and cytokine production. During infection or inflammation of normal tissue, this interaction is important for preventing autoimmunity by maintaining homeostasis of the immune response. In tumor microenvironments, this interaction provides an immune escape for tumor cells through cytotoxic T-cell inactivation. Expression of this gene in tumor cells is considered to be prognostic in many types of human malignancies, including colon cancer and renal cell carcinoma. Alternative splicing results in multiple transcript variants.

Recommended Dilutions

WB 1:100 - 1:500**IHC-P** 1:50 - 1:200

Immunogen Information

Gene ID

29126

Swiss Prot

Q9NZQ7

Immunogen

A synthetic peptide corresponding to a sequence within amino acids 19-238 of human PD-L1/CD274 (NP_054862.1).

Synonyms

B7-H; B7H1; PDL1; PD-L1; hPD-L1; PDCD1L1; PDCD1LG1; PD-L1/CD274

Contact

 | 400-999-6126 | cn.market@abclonal.com.cn | www.abclonal.com.cn

Product Information

Source

Rabbit

Isotype

IgG

Purification

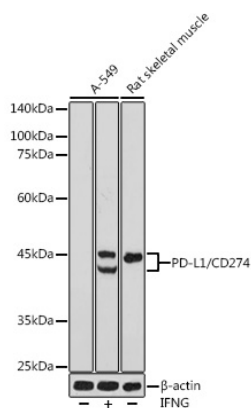
Affinity purification

Storage

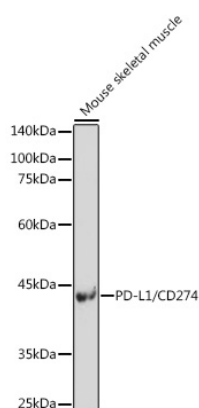
Store at -20°C. Avoid freeze / thaw cycles.

Buffer: PBS with 0.01% thimerosal, 50% glycerol, pH 7.3.

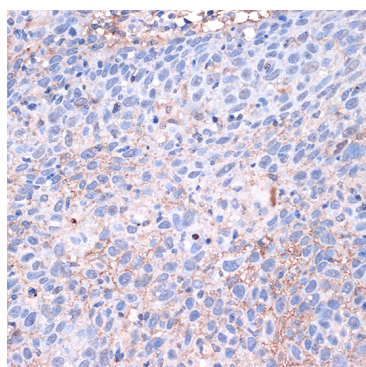
Validation Data



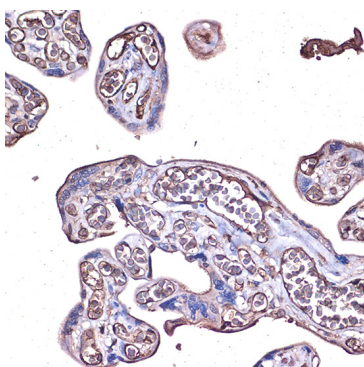
Western blot analysis of various lysates using PD-L1/CD274 Rabbit pAb (A11273) at 1:500 dilution. A-549 cells were treated by IFNG (100 ng/mL) at 37°C for 48 hours. Secondary antibody: HRP Goat Anti-Rabbit IgG (H+L) (AS014) at 1:10000 dilution. Lysates/proteins: 25µg per lane. Blocking buffer: 3% nonfat dry milk in TBST. Detection: ECL Basic Kit (RM00020). Exposure time: 180s.



Western blot analysis of lysates from Mouse skeletal muscle, using PD-L1/CD274 Rabbit pAb (A11273) at 1:500 dilution. Secondary antibody: HRP Goat Anti-Rabbit IgG (H+L) (AS014) at 1:10000 dilution. Lysates/proteins: 25µg per lane. Blocking buffer: 3% nonfat dry milk in TBST. Detection: ECL Enhanced Kit (RM00021). Exposure time: 180s.



Immunohistochemistry analysis of PD-L1/CD274 in paraffin-embedded human esophageal cancer using PD-L1/CD274 Rabbit pAb (A11273) at dilution of 1:100 (40x lens). Perform high pressure antigen retrieval with 10 mM citrate buffer pH 6.0 before commencing with IHC staining protocol.



Immunohistochemistry analysis of PD-L1/CD274 in paraffin-embedded human placenta using PD-L1/CD274 Rabbit pAb (A11273) at dilution of 1:100 (40x lens). Perform high pressure antigen retrieval with 10 mM citrate buffer pH 6.0 before commencing with IHC staining protocol.