

# SIRT1 Rabbit pAb

Catalog No.: A11267

62 Publications

## Basic Information

**Observed MW**

120 kDa

**Calculated MW**

82 kDa

**Category**

Primary antibody

**Applications**

WB, IP, IHC-P, ELISA

**Cross-Reactivity**

Human, Mouse, Rat


## Background

This gene encodes a member of the sirtuin family of proteins, homologs to the yeast Sir2 protein. Members of the sirtuin family are characterized by a sirtuin core domain and grouped into four classes. The functions of human sirtuins have not yet been determined; however, yeast sirtuin proteins are known to regulate epigenetic gene silencing and suppress recombination of rDNA. Studies suggest that the human sirtuins may function as intracellular regulatory proteins with mono-ADP-ribosyltransferase activity. The protein encoded by this gene is included in class I of the sirtuin family. Alternative splicing results in multiple transcript variants.

## Recommended Dilutions

**WB** 1:1000 - 1:5000**IP** 0.5µg-4µg antibody for  
200µg-400µg extracts of  
whole cells**IHC-P** 1:50 - 1:200**ELISA** Recommended starting  
concentration is 1 µg/mL.  
Please optimize the  
concentration based on  
your specific assay  
requirements.

## Contact

 | 400-999-6126 | [cn.market@abclonal.com.cn](mailto:cn.market@abclonal.com.cn) | [www.abclonal.com.cn](http://www.abclonal.com.cn)

## Immunogen Information

**Gene ID**

23411

**Swiss Prot**

Q96EB6

**Immunogen**

This information is considered to be commercially sensitive.

**Synonyms**

SIR2; SIR2L1; SIR2alpha; SIRT1

## Product Information

**Source**

Rabbit

**Isotype**

IgG

**Purification**

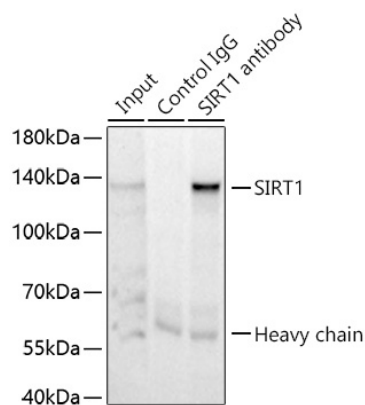
Affinity purification

**Storage**

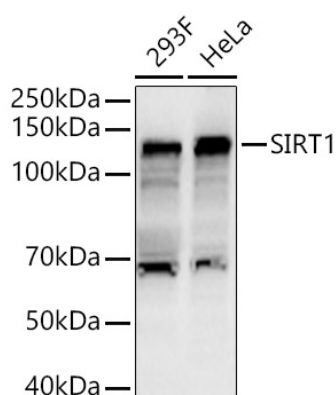
Store at -20°C. Avoid freeze / thaw cycles.

Buffer: PBS containing 50% glycerol, preserved with proclin300 or sodium azide (as specified on the Certificate of Analysis), pH 7.3.

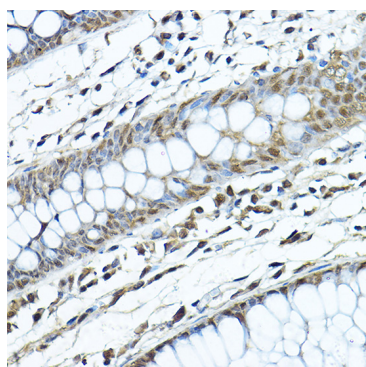
## Validation Data



Immunoprecipitation of SIRT1 from 300 µg extracts of HeLa cells was performed using 1 µg of SIRT1 Rabbit pAb (A11267). Rabbit Control IgG (AC005) was used to precipitate the Control IgG sample. IP samples were eluted with 1x Laemmli Buffer. The Input lane represents 10% of the total input. Western blot analysis of immunoprecipitates was conducted using SIRT1 Rabbit pAb (A11267) at a dilution of 1:1000.



Western blot analysis of various lysates, using SIRT1 Rabbit pAb (A11267) at 1:2000 dilution. Secondary antibody: HRP-conjugated Goat anti-Rabbit IgG (H+L) (AS014) at 1:10000 dilution. Lysates/proteins: 25µg per lane. Blocking buffer: 3% nonfat dry milk in TBST. Detection: ECL Basic Kit (RM00020). Exposure time: 30s.



Immunohistochemistry analysis of paraffin-embedded Human colon using SIRT1 Rabbit pAb (A11267) at dilution of 1:200 (40x lens). High pressure antigen retrieval performed with 0.01M Citrate buffer (pH 6.0) prior to IHC staining.