

# NF- $\kappa$ B p65/RelA Rabbit pAb

Catalog No.: A11204

19 Publications

## Basic Information

**Observed MW**

65kDa

**Calculated MW**

60kDa

**Category**

Primary antibody

**Applications**

WB, IF/ICC, IP, ELISA

**Cross-Reactivity**

Human, Mouse, Rat

## Background

NF- $\kappa$ B is a ubiquitous transcription factor involved in several biological processes. It is held in the cytoplasm in an inactive state by specific inhibitors. Upon degradation of the inhibitor, NF- $\kappa$ B moves to the nucleus and activates transcription of specific genes. NF- $\kappa$ B is composed of NFKB1 or NFKB2 bound to either REL, RELA, or RELB. The most abundant form of NF- $\kappa$ B is NFKB1 complexed with the product of this gene, RELA. Four transcript variants encoding different isoforms have been found for this gene.

## Recommended Dilutions

**WB** 1:500 - 1:2000**IF/ICC** 1:50 - 1:200**IP** 0.5 $\mu$ g-4 $\mu$ g antibody for  
200 $\mu$ g-400 $\mu$ g extracts of  
whole cells**ELISA** Recommended starting  
concentration is 1  $\mu$ g/mL.  
Please optimize the  
concentration based on  
your specific assay  
requirements.

## Contact

 | 400-999-6126 | [cn.market@abclonal.com.cn](mailto:cn.market@abclonal.com.cn) | [www.abclonal.com.cn](http://www.abclonal.com.cn)

## Immunogen Information

**Gene ID**

5970

**Swiss Prot**

Q04206

**Immunogen**

Synthetic peptide. This information is considered to be commercially sensitive.

**Synonyms**p65; CMCU; NFKB3; AIF3BL3; NF- $\kappa$ B p65/RelA

## Product Information

**Source**

Rabbit

**Isotype**

IgG

**Purification**

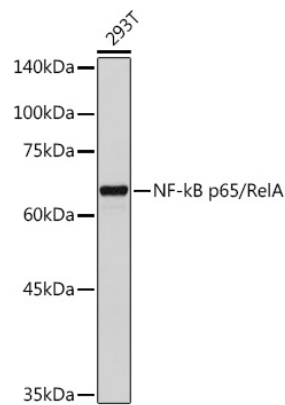
Affinity purification

**Storage**

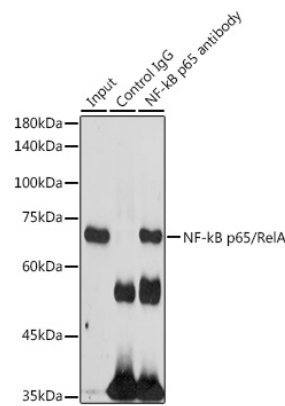
Store at -20°C. Avoid freeze / thaw cycles.

Buffer: PBS containing 50% glycerol, preserved with proclin300 or sodium azide (as specified on the Certificate of Analysis), pH 7.3.

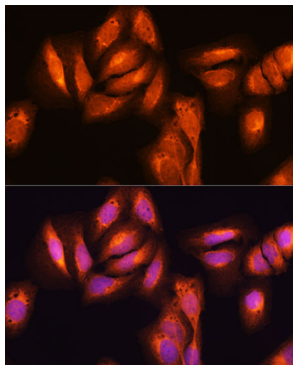
Validation Data



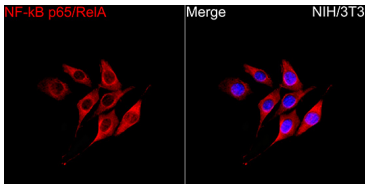
Western blot analysis of lysates from 293T cells, using NF-kB p65/RelA Rabbit pAb (A11204) at 1:1000 dilution.  
Secondary antibody: HRP-conjugated Goat anti-Rabbit IgG (H+L) (AS014) at 1:10000 dilution.  
Lysates/proteins: 25µg per lane.  
Blocking buffer: 3% nonfat dry milk in TBST.  
Detection: ECL Basic Kit (RM00020).  
Exposure time: 60s.



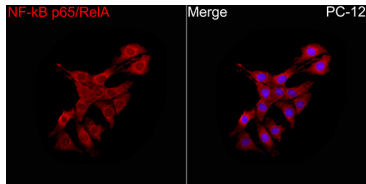
Immunoprecipitation analysis of 300 µg extracts of 293T cells using 3 µg NF-kB p65/RelA antibody (A11204). Western blot was performed from the immunoprecipitate using NF-kB p65/RelA antibody (A11204) at a dilution of 1:1000.



Immunofluorescence analysis of U2OS cells using NF-kB p65/RelA Rabbit pAb (A11204) at dilution of 1:100. Blue: DAPI for nuclear staining.



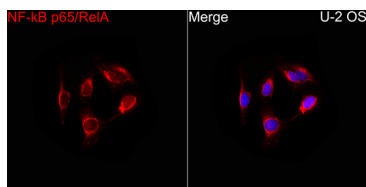
Immunofluorescence analysis of NIH/3T3 cells using NF-kB p65/RelA Rabbit pAb (A11204) at a dilution of 1:100 (40x lens). Secondary antibody: Cy3-conjugated Goat anti-Rabbit IgG (H+L)(AS007) at 1:500 dilution. Blue: DAPI for nuclear staining.



Immunofluorescence analysis of PC-12 cells using NF-kB p65/RelA Rabbit pAb (A11204) at a dilution of 1:100 (40x lens). Secondary antibody: Cy3-conjugated Goat anti-Rabbit IgG (H+L)(AS007) at 1:500 dilution. Blue: DAPI for nuclear staining.

## Validation Data

---



Immunofluorescence analysis of U-2 OS cells using NF-kB p65/RelA Rabbit pAb (A11204) at a dilution of 1:100 (40x lens). Secondary antibody: Cy3-conjugated Goat anti-Rabbit IgG (H+L)(AS007) at 1:500 dilution. Blue: DAPI for nuclear staining.