

[KD Validated] FAK Rabbit pAb

Catalog No.: A11195 **21 Publications**

Basic Information

Observed MW

125Kda/119kDa

Calculated MW

119kDa

Category

Primary antibody

Applications

WB,IHC-P,IF/ICC,IP,ELISA

Cross-Reactivity

Human, Mouse, Rat

Background

This gene encodes a cytoplasmic protein tyrosine kinase which is found concentrated in the focal adhesions that form between cells growing in the presence of extracellular matrix constituents. The encoded protein is a member of the FAK subfamily of protein tyrosine kinases but lacks significant sequence similarity to kinases from other subfamilies. Activation of this gene may be an important early step in cell growth and intracellular signal transduction pathways triggered in response to certain neural peptides or to cell interactions with the extracellular matrix. Several transcript variants encoding different isoforms have been found for this gene.

Recommended Dilutions

WB	1:500 - 1:4000
IHC-P	1:50 - 1:200
IF/ICC	1:50 - 1:200
IP	0.5µg-4µg antibody for 200µg-400µg extracts of whole cells
ELISA	Recommended starting concentration is 1 µg/mL. Please optimize the concentration based on your specific assay requirements.

Contact

☎ | 400-999-6126

✉ | cn.market@abclonal.com.cn

🌐 | www.abclonal.com.cn

Immunogen Information

Gene ID

5747

Swiss Prot

Q05397

Immunogen

Recombinant protein (or fragment). This information is considered to be commercially sensitive.

Synonyms

FAK; FADK; FAK1; FRNK; FADK 1; PPP1R71; p125FAK; pp125FAK

Product Information

Source

Rabbit

Isotype

IgG

Purification

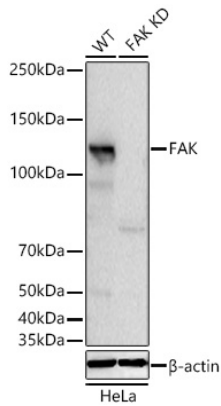
Affinity purification

Storage

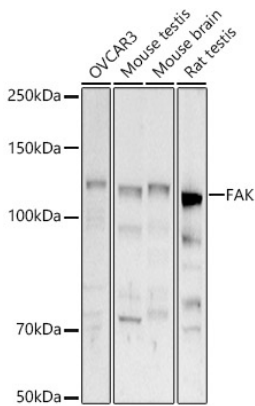
Store at -20°C. Avoid freeze / thaw cycles.

Buffer: PBS containing 50% glycerol, preserved with proclin300 or sodium azide (as specified on the Certificate of Analysis), pH 7.3.

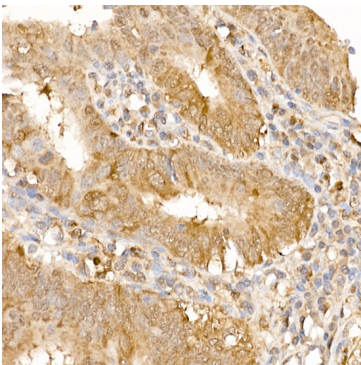
Validation Data



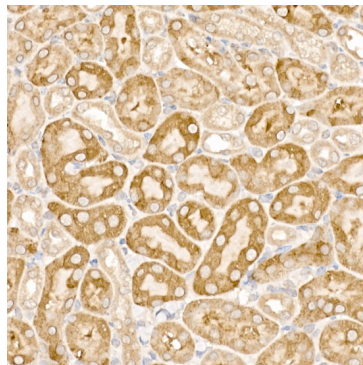
Western blot analysis of lysates from wild type (WT) and FAK knockdown (KD) HeLa cells using FAK Rabbit pAb (A11195) at 1:1000 dilution incubated overnight at 4°C.
Secondary antibody: HRP-conjugated Goat anti-Rabbit IgG (H+L) (AS014) at 1:10000 dilution.
Lysates/proteins: 25 µg per lane.
Blocking buffer: 3% nonfat dry milk in TBST.
Detection: ECL Basic Kit (RM00020).
Exposure time: 20s.



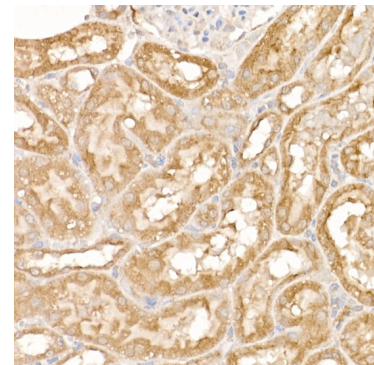
Western blot analysis of various lysates using FAK Rabbit pAb (A11195) at 1:1000 dilution.
Secondary antibody: HRP-conjugated Goat anti-Rabbit IgG (H+L) (AS014) at 1:10000 dilution.
Lysates/proteins: 25µg per lane.
Blocking buffer: 3% nonfat dry milk in TBST.
Detection: ECL Basic Kit (RM00020).
Exposure time: 30s.



Immunohistochemistry analysis of paraffin-embedded Human colon carcinoma using FAK Rabbit pAb (A11195) at dilution of 1:50 (40x lens). High pressure antigen retrieval performed with 0.01M Citrate buffer (pH 6.0) prior to IHC staining.

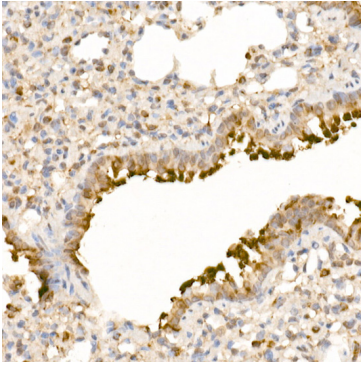


Immunohistochemistry analysis of paraffin-embedded Mouse kidney using FAK Rabbit pAb (A11195) at dilution of 1:50 (40x lens). High pressure antigen retrieval performed with 0.01M Citrate buffer (pH 6.0) prior to IHC staining.

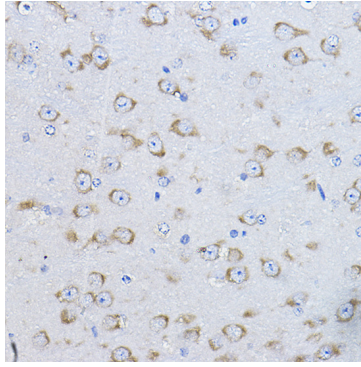


Immunohistochemistry analysis of paraffin-embedded Rat kidney using FAK Rabbit pAb (A11195) at dilution of 1:50 (40x lens). High pressure antigen retrieval performed with 0.01M Citrate buffer (pH 6.0) prior to IHC staining.

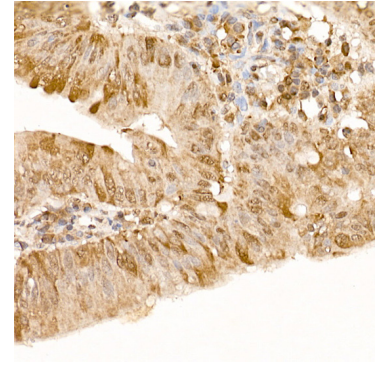
Validation Data



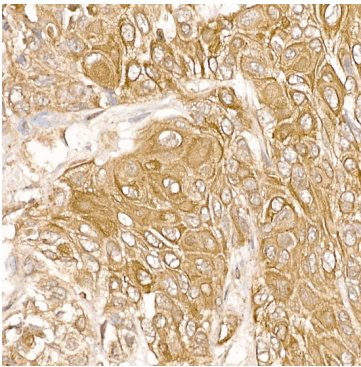
Immunohistochemistry analysis of paraffin-embedded Rat lung using FAK Rabbit pAb (A11195) at dilution of 1:50 (40x lens). High pressure antigen retrieval performed with 0.01M Citrate buffer (pH 6.0) prior to IHC staining.



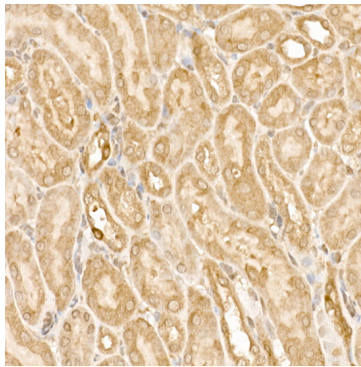
Immunohistochemistry analysis of paraffin-embedded Mouse brain using FAK Rabbit pAb (A11195) at dilution of 1:100 (40x lens). High pressure antigen retrieval performed with 0.01M Citrate buffer (pH 6.0) prior to IHC staining.



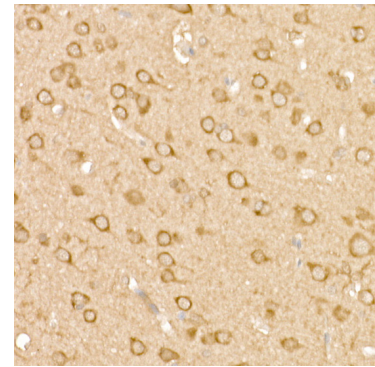
Immunohistochemistry analysis of paraffin-embedded Human colon carcinoma using FAK Rabbit pAb (A11195) at dilution of 1:50 (40x lens). High pressure antigen retrieval performed with 0.01M Citrate buffer (pH 6.0) prior to IHC staining.



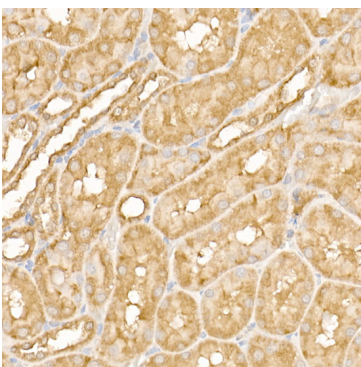
Immunohistochemistry analysis of paraffin-embedded Human esophageal cancer using FAK Rabbit pAb (A11195) at dilution of 1:50 (40x lens). High pressure antigen retrieval performed with 0.01M Citrate buffer (pH 6.0) prior to IHC staining.



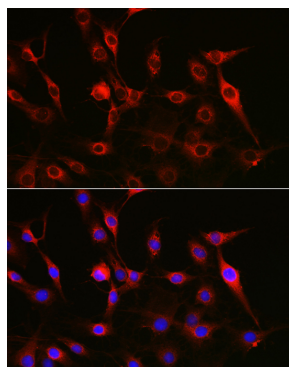
Immunohistochemistry analysis of paraffin-embedded Mouse kidney using FAK Rabbit pAb (A11195) at dilution of 1:50 (40x lens). High pressure antigen retrieval performed with 0.01M Citrate buffer (pH 6.0) prior to IHC staining.



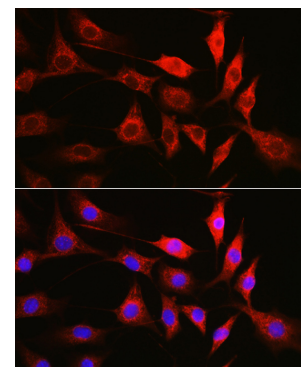
Immunohistochemistry analysis of paraffin-embedded Rat brain using FAK Rabbit pAb (A11195) at dilution of 1:50 (40x lens). High pressure antigen retrieval performed with 0.01M Citrate buffer (pH 6.0) prior to IHC staining.



Immunohistochemistry analysis of paraffin-embedded Rat kidney using FAK Rabbit pAb (A11195) at dilution of 1:50 (40x lens). High pressure antigen retrieval performed with 0.01M Citrate buffer (pH 6.0) prior to IHC staining.

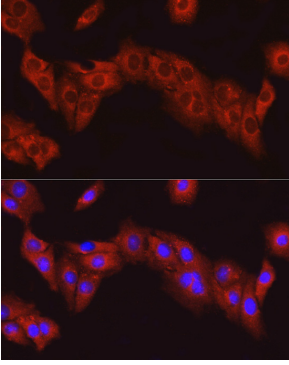


Immunofluorescence analysis of C6 cells using FAK Rabbit pAb (A11195) at dilution of 1:100 (40x lens). Secondary antibody: Cy3-conjugated Goat anti-Rabbit IgG (H+L) (AS007) at 1:500 dilution. Blue: DAPI for nuclear staining.

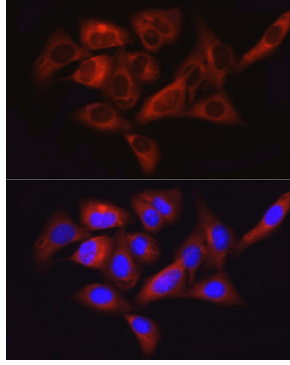


Immunofluorescence analysis of NIH/3T3 cells using FAK Rabbit pAb (A11195) at dilution of 1:100 (40x lens). Secondary antibody: Cy3-conjugated Goat anti-Rabbit IgG (H+L) (AS007) at 1:500 dilution. Blue: DAPI for nuclear staining.

Validation Data



Immunofluorescence analysis of PC-12 cells using FAK Rabbit pAb (A11195) at dilution of 1:100 (40x lens). Secondary antibody: Cy3-conjugated Goat anti-Rabbit IgG (H+L) (AS007) at 1:500 dilution. Blue: DAPI for nuclear staining.



Immunofluorescence analysis of U2OS cells using FAK Rabbit pAb (A11195) at dilution of 1:100 (40x lens). Secondary antibody: Cy3-conjugated Goat anti-Rabbit IgG (H+L) (AS007) at 1:500 dilution. Blue: DAPI for nuclear staining.