

# IL18 Rabbit pAb

Catalog No.: A1115 **110 Publications**

## Basic Information

**Observed MW**

18kDa

**Calculated MW**

22kDa

**Category**

Primary antibody

**Applications**

WB, IP, ELISA

**Cross-Reactivity**

Human

## Background

The protein encoded by this gene is a proinflammatory cytokine of the IL-1 family that is constitutively found as a precursor within the cytoplasm of a variety of cells including macrophages and keratinocytes. The inactive IL-18 precursor is processed to its active form by caspase-1, and is capable of stimulating interferon gamma production, and of regulating both T helper (Th) 1 and Th2 responses. This cytokine has been implicated in the injury of different organs, and in potentially fatal conditions characterized by a cytokine storm. In humans, IL-18 gene is located on chromosome 11. Alternatively spliced transcript variants encoding different isoforms have been found for this gene.

## Recommended Dilutions

**WB** 1:500 - 1:1000**IP** 0.5µg-4µg antibody for  
200µg-400µg extracts of  
whole cells**ELISA** Recommended starting  
concentration is 1 µg/mL.  
Please optimize the  
concentration based on  
your specific assay  
requirements.

## Immunogen Information

**Gene ID**

3606

**Swiss Prot**

Q14116

**Immunogen**

Synthetic peptide. This information is considered to be commercially sensitive.

**Synonyms**

IGIF; IL-18; IL-1g; IL1F4; IL18

## Contact

 | 400-999-6126 | [cn.market@abclonal.com.cn](mailto:cn.market@abclonal.com.cn) | [www.abclonal.com.cn](http://www.abclonal.com.cn)

## Product Information

**Source**

Rabbit

**Isotype**

IgG

**Purification**

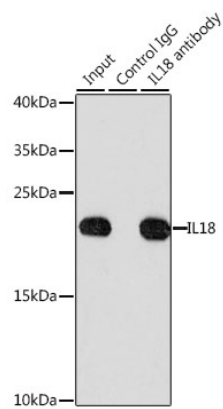
Affinity purification

**Storage**

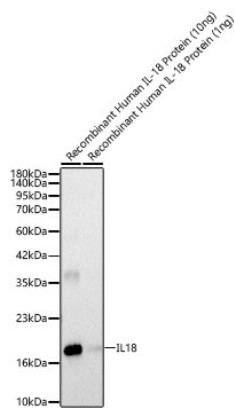
Store at -20°C. Avoid freeze / thaw cycles.

Buffer: PBS containing 50% glycerol, preserved with proclin300 or sodium azide (as specified on the Certificate of Analysis), pH 7.3.

Validation Data



Immunoprecipitation analysis of 200 µg extracts of HeLa cells, using 3 µg IL18 antibody (A1115). Western blot was performed from the immunoprecipitate using IL18 antibody (A1115) at a dilution of 1:1000.



Western blot analysis of Recombinant Human IL-18 Protein (RP00006) using IL18 Rabbit pAb (A1115) at 1:500 dilution.  
Secondary antibody: HRP-conjugated Goat anti-Rabbit IgG (H+L) (AS014) at 1:10000 dilution.  
Lysates/proteins: 10 ng/1 ng per lane.  
Blocking buffer: 3% nonfat dry milk in TBST.  
Detection: ECL Basic Kit (RM00020).  
Exposure time: 20s.