

# IL1 $\beta$ Rabbit pAb

Catalog No.: A1112 **176 Publications**

## Basic Information

**Observed MW**

17kDa/35kDa

**Calculated MW**

31kDa

**Category**

Primary antibody

**Applications**

WB, IF/ICC, ELISA

**Cross-Reactivity**

Human, Mouse, Rat

## Background

The protein encoded by this gene is a member of the interleukin 1 cytokine family. This cytokine is produced by activated macrophages as a proprotein, which is proteolytically processed to its active form by caspase 1 (CASP1/ICE). This cytokine is an important mediator of the inflammatory response, and is involved in a variety of cellular activities, including cell proliferation, differentiation, and apoptosis. The induction of cyclooxygenase-2 (PTGS2/COX2) by this cytokine in the central nervous system (CNS) is found to contribute to inflammatory pain hypersensitivity. Similarly, IL-1B has been implicated in human osteoarthritis pathogenesis. Patients with severe Coronavirus Disease 2019 (COVID-19) present elevated levels of pro-inflammatory cytokines such as IL-1B in bronchial alveolar lavage fluid samples. The lung damage induced by the Severe acute respiratory syndrome coronavirus 2 (SARS-CoV-2) is to a large extent, a result of the inflammatory response promoted by cytokines such as IL-1B. This gene and eight other interleukin 1 family genes form a cytokine gene cluster on chromosome 2.

## Recommended Dilutions

**WB** 1:500 - 1:1000**IF/ICC** 1:50 - 1:200

**ELISA** Recommended starting concentration is 1  $\mu$ g/mL. Please optimize the concentration based on your specific assay requirements.

## Immunogen Information

**Gene ID**

3553

**Swiss Prot**

P01584

**Immunogen**

Recombinant protein (or fragment). This information is considered to be commercially sensitive.

**Synonyms**IL-1; IL1F2; IL1beta; IL1-BETA; IL1 $\beta$ 

## Contact

 | 400-999-6126 | [cn.market@abclonal.com.cn](mailto:cn.market@abclonal.com.cn) | [www.abclonal.com.cn](http://www.abclonal.com.cn)

## Product Information

**Source**

Rabbit

**Isotype**

IgG

**Purification**

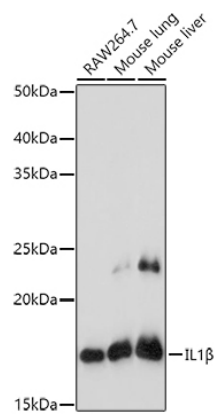
Affinity purification

**Storage**

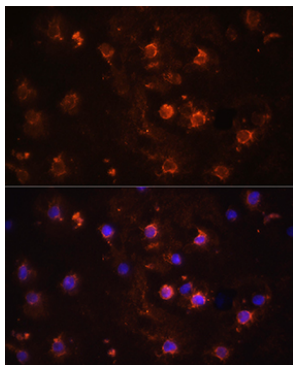
Store at -20°C. Avoid freeze / thaw cycles.

Buffer: PBS with 0.09% sodium azide, 50% glycerol, pH 7.3.

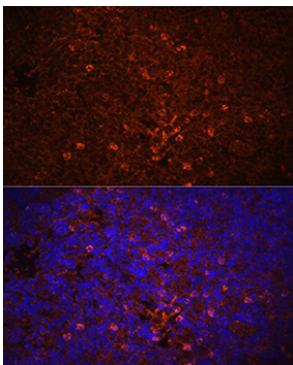
Validation Data



Western blot analysis of various lysates using IL1β Rabbit pAb (A1112) at 1:1000 dilution.  
Secondary antibody: HRP-conjugated Goat anti-Rabbit IgG (H+L) (AS014) at 1:10000 dilution.  
Lysates/proteins: 25μg per lane.  
Blocking buffer: 3% nonfat dry milk in TBST.  
Detection: ECL Basic Kit (RM00020).  
Exposure time: 180s.



Immunofluorescence analysis of THP-1 cells using IL1β Rabbit pAb (A1112) at dilution of 1:100. Blue: DAPI for nuclear staining.



Immunofluorescence analysis of Rat spleen using IL1β Rabbit pAb (A1112) at dilution of 1:100. Blue: DAPI for nuclear staining.