

IRF3 Rabbit pAb

Catalog No.: A11118

16 Publications

Basic Information

Observed MW

47kDa

Calculated MW

47kDa

Category

Primary antibody

Applications

WB, IHC-P, IF/ICC, IP, ELISA, ChIP

Cross-Reactivity

Human, Mouse, Rat

Background

This gene encodes a member of the interferon regulatory transcription factor (IRF) family. The encoded protein is found in an inactive cytoplasmic form that upon serine/threonine phosphorylation forms a complex with CREBBP. This complex translocates to the nucleus and activates the transcription of interferons alpha and beta, as well as other interferon-induced genes. The protein plays an important role in the innate immune response against DNA and RNA viruses. Mutations in this gene are associated with Encephalopathy, acute, infection-induced, herpes-specific, 7.

Recommended Dilutions

WB 1:1000 - 1:5000**IHC-P** 1:50 - 1:200**IF/ICC** 1:50 - 1:200**IP** 0.5µg-4µg antibody for
200µg-400µg extracts of
whole cells**ELISA** Recommended starting
concentration is 1 µg/mL.
Please optimize the
concentration based on
your specific assay
requirements.**ChIP** 5µg antibody for
10µg-15µg of Chromatin

Immunogen Information

Gene ID

3661

Swiss Prot

Q14653

Immunogen

Recombinant protein (or fragment). This information is considered to be commercially sensitive.

Synonyms

IIAE7; IRF3

Product Information

Source

Rabbit

Isotype

IgG

Purification

Affinity purification

Storage

Store at -20°C. Avoid freeze / thaw cycles.

Buffer: PBS with 0.09% Sodium azide, 50% glycerol, pH7.3.

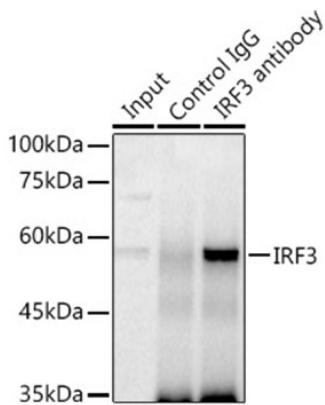
Contact

☎ | 400-999-6126

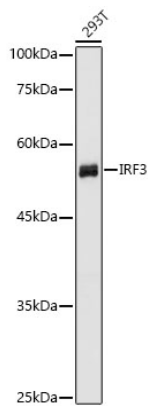
✉ | cn.market@abclonal.com.cn

🌐 | www.abclonal.com.cn

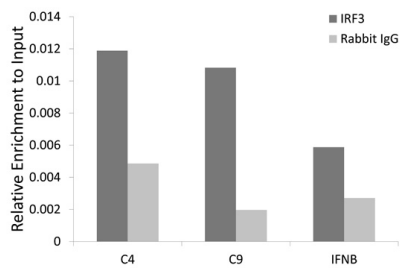
Validation Data



Immunoprecipitation analysis of 300 µg extracts of 293T cells using 3 µg IRF3 antibody (A11118). Western blot was performed from the immunoprecipitate using IRF3 (A11118) at a dilution of 1:1000.



Western blot analysis of lysates from 293T cells using IRF3 Rabbit pAb (A11118) at 1:1000 dilution. Secondary antibody: HRP-conjugated Goat anti-Rabbit IgG (H+L) (AS014) at 1:10000 dilution. Lysates/proteins: 25 µg per lane. Blocking buffer: 3% nonfat dry milk in TBST. Detection: ECL Basic Kit (RM00020). Exposure time: 1s.



Chromatin immunoprecipitation analysis of extracts of HCT116 cell line, using IRF3 rabbit polyclonal antibody (A11118) and rabbit IgG. The amount of immunoprecipitated DNA was checked by quantitative PCR. Histogram was constructed by the ratios of the immunoprecipitated DNA to the input.

