

# CTGF Rabbit pAb

Catalog No.: A11067 **29 Publications**

## Basic Information

### Observed MW

16-20 kDa/35 kDa

### Calculated MW

38kDa

### Category

Primary antibody

### Applications

WB,IF/ICC,IF-P,ELISA

### Cross-Reactivity

Human, Rat

## Background

The protein encoded by this gene is a mitogen that is secreted by vascular endothelial cells. The encoded protein plays a role in chondrocyte proliferation and differentiation, cell adhesion in many cell types, and is related to platelet-derived growth factor. Certain polymorphisms in this gene have been linked with a higher incidence of systemic sclerosis.

## Recommended Dilutions

**WB** 1:1000 - 1:6000

**IF/ICC** 1:20 - 1:100

**IF-P** 1:20 - 1:100

**ELISA** Recommended starting concentration is 1 µg/mL. Please optimize the concentration based on your specific assay requirements.

## Immunogen Information

### Gene ID

1490

### Swiss Prot

P29279

### Immunogen

Synthetic peptide. This information is considered to be commercially sensitive.

### Synonyms

CTGF; NOV2; HCS24; IGFBP8

## Contact

☎ | 400-999-6126

✉ | [cn.market@abclonal.com.cn](mailto:cn.market@abclonal.com.cn)

🌐 | [www.abclonal.com.cn](http://www.abclonal.com.cn)

## Product Information

### Source

Rabbit

### Isotype

IgG

### Purification

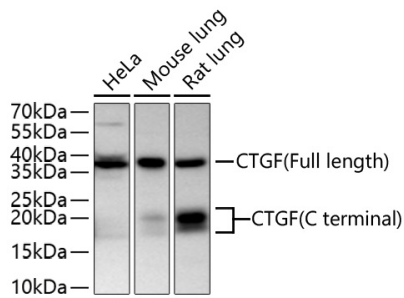
Affinity purification

### Storage

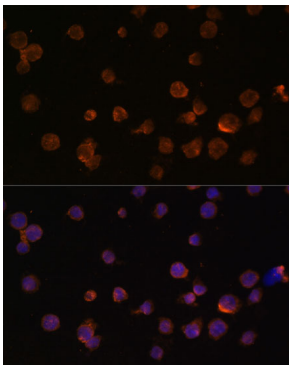
Store at -20°C. Avoid freeze / thaw cycles.

Buffer: PBS containing 50% glycerol, preserved with proclin300 or sodium azide (as specified on the Certificate of Analysis), pH 7.3.

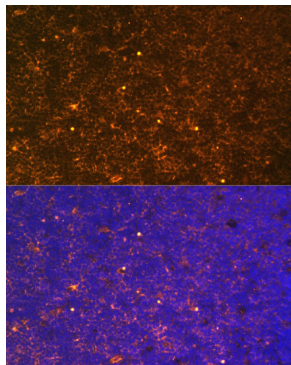
## Validation Data



Western blot analysis of various lysates using CTGF Rabbit pAb (A11067) at 1:6000 dilution incubated overnight at 4°C.  
Secondary antibody: HRP-conjugated Goat anti-Rabbit IgG (H+L) (AS014) at 1:10000 dilution.  
Lysates/proteins: 25 µg per lane.  
Blocking buffer: 3% nonfat dry milk in TBST.  
Detection: ECL Basic Kit (RM00020).  
Exposure time: 90 s.



Immunofluorescence analysis of THP-1 cells using CTGF Rabbit pAb (A11067) at dilution of 1:100. Secondary antibody: Cy3-conjugated Goat anti-Rabbit IgG (H+L) (AS007) at 1:500 dilution. Blue: DAPI for nuclear staining.



Immunofluorescence analysis of paraffin-embedded Rat thymus using CTGF Rabbit pAb (A11067) at dilution of 1:100. Secondary antibody: Cy3-conjugated Goat anti-Rabbit IgG (H+L) (AS007) at 1:500 dilution. Blue: DAPI for nuclear staining.