

SMMHC/MYH11 Rabbit pAb

Catalog No.: A10827 **7 Publications**

Basic Information

Observed MW

250kDa

Calculated MW

227kDa

Category

Primary antibody

Applications

WB, IF/ICC, ELISA

Cross-Reactivity

Human, Mouse, Rat

Background

The protein encoded by this gene is a smooth muscle myosin belonging to the myosin heavy chain family. The gene product is a subunit of a hexameric protein that consists of two heavy chain subunits and two pairs of non-identical light chain subunits. It functions as a major contractile protein, converting chemical energy into mechanical energy through the hydrolysis of ATP. A chromosomal rearrangement involving this gene is associated with acute myeloid leukemia of the M4Eo subtype. Mutations in this gene are associated with visceral myopathy, megacystis-microcolon-intestinal hypoperistalsis syndrome 2, and familial thoracic aortic aneurysm 4.

Recommended Dilutions

WB 1:500 - 1:1000**IF/ICC** 1:50 - 1:200

ELISA Recommended starting concentration is 1 µg/mL. Please optimize the concentration based on your specific assay requirements.

Immunogen Information

Gene ID

4629

Swiss Prot

P35749

Immunogen

Recombinant protein (or fragment). This information is considered to be commercially sensitive.

Synonyms

AAT4; FAA4; SMHC; SMMHC; VSCM2; SMMS-1; SMMHC/MYH11

Contact

 | 400-999-6126 | cn.market@abclonal.com.cn | www.abclonal.com.cn

Product Information

Source

Rabbit

Isotype

IgG

Purification

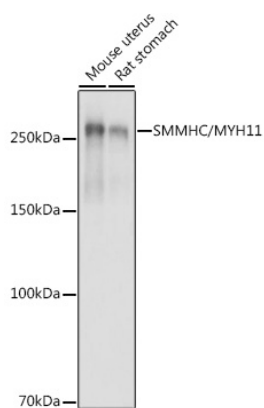
Affinity purification

Storage

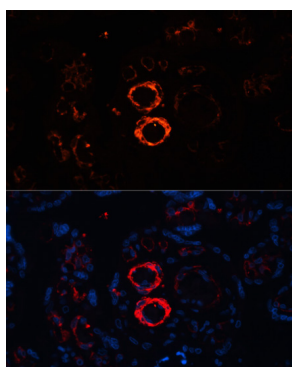
Store at -20°C. Avoid freeze / thaw cycles.

Buffer: PBS containing 50% glycerol, preserved with proclin300 or sodium azide (as specified on the Certificate of Analysis), pH 7.3.

Validation Data



Western blot analysis of various lysates using SMMHC/MYH11 Rabbit pAb (A10827) at 1:500 dilution.
Secondary antibody: HRP-conjugated Goat anti-Rabbit IgG (H+L) (AS014) at 1:10000 dilution.
Lysates/proteins: 25µg per lane.
Blocking buffer: 3% nonfat dry milk in TBST.
Detection: ECL Basic Kit (RM00020).
Exposure time: 1s.



Immunofluorescence analysis of paraffin-embedded human placenta using SMMHC/MYH11 Rabbit pAb (A10827) at dilution of 1:100. Secondary antibody: Cy3-conjugated Goat anti-Rabbit IgG (H+L) (AS007) at 1:500 dilution. Blue: DAPI for nuclear staining.