

Calcineurin A Rabbit pAb

Catalog No.: A1063

6 Publications

Basic Information

Observed MW

57kDa

Calculated MW

59kDa

Category

Primary antibody

Applications

WB,IF/ICC,ELISA

Cross-Reactivity

Human, Mouse

Background

Enables several functions, including ATPase binding activity; calmodulin binding activity; and calmodulin-dependent protein phosphatase activity. Involved in several processes, including calcineurin-NFAT signaling cascade; peptidyl-serine dephosphorylation; and response to calcium ion. Located in several cellular components, including cytosol; dendritic spine; and nucleoplasm. Part of calcineurin complex. Colocalizes with cytoplasmic side of plasma membrane. Implicated in developmental and epileptic encephalopathy 91. Biomarker of focal segmental glomerulosclerosis and schizophrenia.

Recommended Dilutions

WB 1:500 - 1:2000

IF/ICC 1:50 - 1:200

ELISA Recommended starting concentration is 1 µg/mL. Please optimize the concentration based on your specific assay requirements.

Immunogen Information

Gene ID

5530

Swiss Prot

Q08209

Immunogen

Recombinant protein (or fragment). This information is considered to be commercially sensitive.

Synonyms

CALN; CCN1; CNA1; CALNA; DEE91; IECEE; PPP2B; ACCIID; CALNA1; IECEE1; Calcineurin A

Contact

 | 400-999-6126 | cn.market@abclonal.com.cn | www.abclonal.com.cn

Product Information

Source

Rabbit

Isotype

IgG

Purification

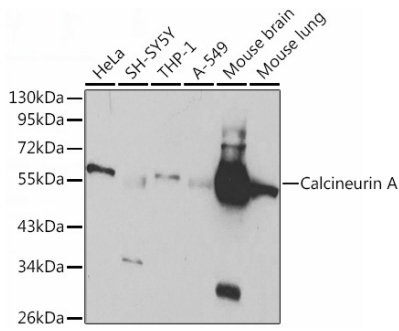
Affinity purification

Storage

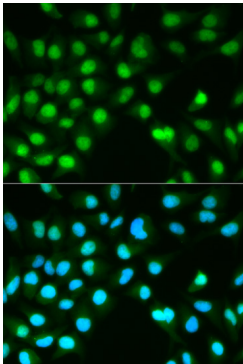
Store at -20°C. Avoid freeze / thaw cycles.

Buffer: PBS with 0.02% sodium azide, 50% glycerol, pH7.3.

Validation Data



Western blot analysis of various lysates using Calcineurin A Rabbit pAb (A1063) at 1:1000 dilution. Secondary antibody: HRP-conjugated Goat anti-Rabbit IgG (H+L) (AS014) at 1:10000 dilution. Lysates/proteins: 25µg per lane. Blocking buffer: 3% nonfat dry milk in TBST.



Immunofluorescence analysis of HeLa cells using Calcineurin A Rabbit pAb (A1063). Secondary antibody: Cy3-conjugated Goat anti-Rabbit IgG (H+L) (AS007) at 1:500 dilution. Blue: DAPI for nuclear staining.