

ANO1 Rabbit pAb

Catalog No.: A10498

6 Publications

Basic Information

Observed MW

150kDa

Calculated MW

114kDa

Category

Primary antibody

Applications

WB, IHC-P, ELISA

Cross-Reactivity

Human, Mouse, Rat

Background

Enables calcium activated cation channel activity; intracellular calcium activated chloride channel activity; and iodide transmembrane transporter activity. Involved in cation transport; inorganic anion transport; and positive regulation of insulin secretion involved in cellular response to glucose stimulus. Located in apical plasma membrane and nucleoplasm.

Recommended Dilutions

WB 1:1000 - 1:5000

IHC-P 1:2000 - 1:8000

ELISA Recommended starting concentration is 1 µg/mL. Please optimize the concentration based on your specific assay requirements.

Immunogen Information

Gene ID

55107

Swiss Prot

Q5XXA6

Immunogen

This information is considered to be commercially sensitive.

Synonyms

DOG1; INDMS; TAOS2; ORAOV2; TMEM16A; ANO1

Contact

☎ | 400-999-6126

✉ | cn.market@abclonal.com.cn

🌐 | www.abclonal.com.cn

Product Information

Source

Rabbit

Isotype

IgG

Purification

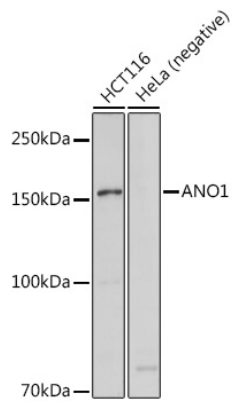
Affinity purification

Storage

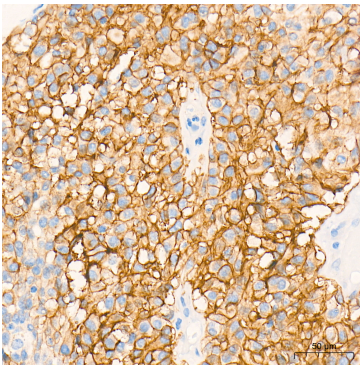
Store at -20°C. Avoid freeze / thaw cycles.

Buffer: PBS, pH 7.3, containing 50% glycerol. Preserved with Proclin300 or sodium azide. May contain 0.05% BSA as specified on the Certificate of Analysis.

Validation Data



Western blot analysis of various lysates using ANO1 Rabbit pAb (A10498) at 1:1000 dilution.
Secondary antibody: HRP-conjugated Goat anti-Rabbit IgG (H+L) (AS014) at 1:10000 dilution.
Lysates/proteins: 25µg per lane.
Blocking buffer: 3% nonfat dry milk in TBST.
Detection: ECL Basic Kit (RM00020).
Exposure time: 1s.



Immunohistochemistry analysis of paraffin-embedded Human gastrointestinal stromal tumors tissue using ANO1 Rabbit pAb (A10498) at a dilution of 1:4000 (40x lens). High pressure antigen retrieval performed with 0.01M Tris-EDTA Buffer (pH 9.0) prior to IHC staining.