

# RFWD2 Rabbit pAb

Catalog No.: A10463

3 Publications

## Basic Information

### Observed MW

110kDa

### Calculated MW

80kDa

### Category

Primary antibody

### Applications

ELISA, WB, IHC-P

### Cross-Reactivity

Human, Mouse

## Background

Enables ubiquitin protein ligase activity. Involved in positive regulation of proteasomal ubiquitin-dependent protein catabolic process; proteasome-mediated ubiquitin-dependent protein catabolic process; and response to ionizing radiation. Part of Cul4A-RING E3 ubiquitin ligase complex.

## Recommended Dilutions

WB 1:500 - 1:2000

IHC-P 1:100 - 1:200

## Immunogen Information

### Gene ID

64326

### Swiss Prot

Q8NHY2

### Immunogen

Recombinant fusion protein containing a sequence corresponding to amino acids 582-731 of human RFWD2 (NP\_071902.2).

### Synonyms

FAP78; RFWD2; CFAP78; RNF200

## Contact

☎ | 400-999-6126

✉ | [cn.market@abclonal.com.cn](mailto:cn.market@abclonal.com.cn)

🌐 | [www.abclonal.com.cn](http://www.abclonal.com.cn)

## Product Information

### Source

Rabbit

### Isotype

IgG

### Purification

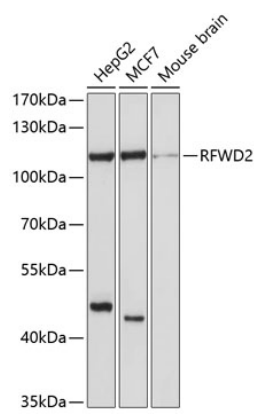
Affinity purification

### Storage

Store at -20°C. Avoid freeze / thaw cycles.

Buffer: PBS with 0.02% sodium azide, 50% glycerol, pH 7.3.

# Validation Data



Western blot analysis of extracts of various cell lines, using RFWD2 antibody (A10463) at 1:1000 dilution.  
Secondary antibody: HRP Goat Anti-Rabbit IgG (H+L) (AS014) at 1:10000 dilution.  
Lysates/proteins: 25µg per lane.  
Blocking buffer: 3% nonfat dry milk in TBST.  
Detection: ECL Basic Kit (RM00020).  
Exposure time: 60s.