

Exportin 2 (XPO2) Rabbit mAb

Catalog No.: A1041 **Recombinant**

Basic Information

Observed MW

105kDa

Calculated MW

110kDa

Category

Primary antibody

Applications

WB, ELISA

Cross-Reactivity

Human, Mouse

CloneNo number

ARC1856

Background

CSE1L (Chromosome Segregation 1-Like) is located on 20q13.13, and encodes a 971-amino-acid protein. It associates with microtubules and mitotic spindles, and is also considered to have a role in tumor progression. The CSE1L protein includes a nuclear localization signal allowing for transport into the nucleus via the importin-alpha/beta heterodimer. In addition, CSE1L plays roles in cell proliferation and apoptosis.

Recommended Dilutions

WB 1:500 - 1:1000

ELISA Recommended starting concentration is 1 µg/mL. Please optimize the concentration based on your specific assay requirements.

Immunogen Information

Gene ID

1434

Swiss Prot

P55060

Immunogen

Synthetic peptide. This information is considered to be commercially sensitive.

Synonyms

CAS; CSE1; XPO2; Exportin 2 (XPO2)

Contact

☎ | 400-999-6126

✉ | cn.market@abclonal.com.cn

🌐 | www.abclonal.com.cn

Product Information

Source

Rabbit

Isotype

IgG

Purification

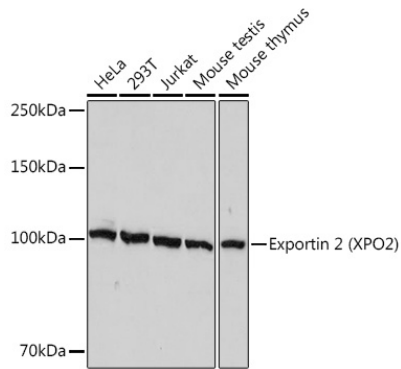
Affinity purification

Storage

Store at -20°C. Avoid freeze / thaw cycles.

Buffer: PBS containing 50% glycerol and 0.05% BSA, preserved with proclin300 or sodium azide (as specified on the Certificate of Analysis), pH 7.3.

Validation Data



Western blot analysis of various lysates using Exportin 2 (XPO2) Rabbit mAb (A1041) at 1:1000 dilution.
Secondary antibody: HRP-conjugated Goat anti-Rabbit IgG (H+L) (AS014) at 1:10000 dilution.
Lysates/proteins: 25µg per lane.
Blocking buffer: 3% nonfat dry milk in TBST.
Detection: ECL Basic Kit (RM00020).
Exposure time: 10s.