

CNPase Rabbit pAb

Catalog No.: A1018 **4 Publications**

Basic Information

Observed MW

48kDa/

Calculated MW

48kDa

Category

Primary antibody

Applications

WB,IF-P,ELISA

Cross-Reactivity

Human, Mouse, Rat

Background

Predicted to enable 2',3'-cyclic-nucleotide 3'-phosphodiesterase activity. Involved in substantia nigra development. Located in several cellular components, including extracellular space; microtubule; and plasma membrane. Implicated in hypomyelinating leukodystrophy 20; multiple sclerosis; and schizophrenia. Biomarker of alcoholic liver cirrhosis; multiple sclerosis; and restless legs syndrome.

Recommended Dilutions

WB 1:500 - 1:2000

IF-P 1:50 - 1:200

ELISA Recommended starting concentration is 1 µg/mL. Please optimize the concentration based on your specific assay requirements.

Immunogen Information

Gene ID

1267

Swiss Prot

P09543

Immunogen

Recombinant protein (or fragment). This information is considered to be commercially sensitive.

Synonyms

CNP1; HLD20; CNPase

Contact

☎ | 400-999-6126

✉ | cn.market@abclonal.com.cn

🌐 | www.abclonal.com.cn

Product Information

Source

Rabbit

Isotype

IgG

Purification

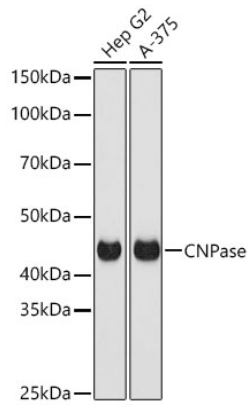
Affinity purification

Storage

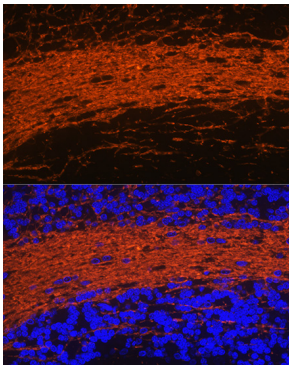
Store at -20°C. Avoid freeze / thaw cycles.

Buffer: PBS containing 50% glycerol, preserved with proclin300 or sodium azide (as specified on the Certificate of Analysis), pH 7.3.

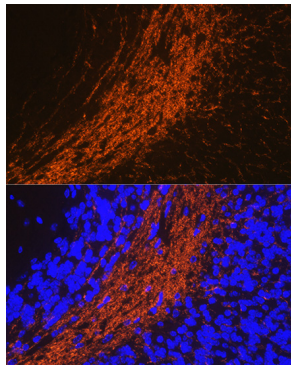
Validation Data



Western blot analysis of various lysates using CNPase Rabbit pAb (A1018) at 1:1000 dilution. Secondary antibody: HRP-conjugated Goat anti-Rabbit IgG (H+L) (AS014) at 1:10000 dilution. Lysates / proteins: 25 µg per lane. Blocking buffer: 3 % nonfat dry milk in TBST. Detection: ECL Basic Kit (RM00020). Exposure time: 1s.



Immunofluorescence analysis of paraffin-embedded rat brain using CNPasease Rabbit pAb (A1018) at dilution of 1:100 (40x lens). Secondary antibody: Cy3-conjugated Goat anti-Rabbit IgG (H+L) (AS007) at 1:500 dilution. Blue: DAPI for nuclear staining.



Immunofluorescence analysis of paraffin-embedded mouse brain using CNPasease Rabbit pAb (A1018) at dilution of 1:100 (40x lens). Secondary antibody: Cy3-conjugated Goat anti-Rabbit IgG (H+L) (AS007) at 1:500 dilution. Blue: DAPI for nuclear staining.