

# Casein Kinase 2 alpha (CSNK2A1) Rabbit pAb

Catalog No.: A1014 **3 Publications**

## Basic Information

### Observed MW

41kDa

### Calculated MW

45kDa

### Category

Primary antibody

### Applications

WB,IHC-P,ELISA

### Cross-Reactivity

Human, Mouse, Rat

## Background

Casein kinase II is a serine/threonine protein kinase that phosphorylates acidic proteins such as casein. It is involved in various cellular processes, including cell cycle control, apoptosis, and circadian rhythm. The kinase exists as a tetramer and is composed of an alpha, an alpha-prime, and two beta subunits. The alpha subunits contain the catalytic activity while the beta subunits undergo autophosphorylation. The protein encoded by this gene represents the alpha subunit. Multiple transcript variants encoding different protein isoforms have been found for this gene.

## Recommended Dilutions

**WB** 1:500 - 1:1000**IHC-P** 1:50 - 1:200**ELISA** Recommended starting concentration is 1 µg/mL. Please optimize the concentration based on your specific assay requirements.

## Immunogen Information

**Gene ID**

1457

**Swiss Prot**

P68400

**Immunogen**

Recombinant protein (or fragment). This information is considered to be commercially sensitive.

**Synonyms**

CKII; Cka1; Cka2; CK2A1; OCNDS; Casein Kinase 2 alpha (CSNK2A1)

## Contact

 | 400-999-6126 | [cn.market@abclonal.com.cn](mailto:cn.market@abclonal.com.cn) | [www.abclonal.com.cn](http://www.abclonal.com.cn)

## Product Information

**Source**

Rabbit

**Isotype**

IgG

**Purification**

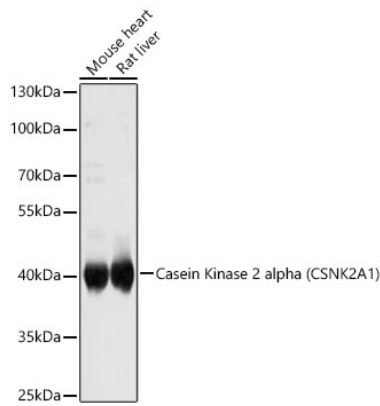
Affinity purification

**Storage**

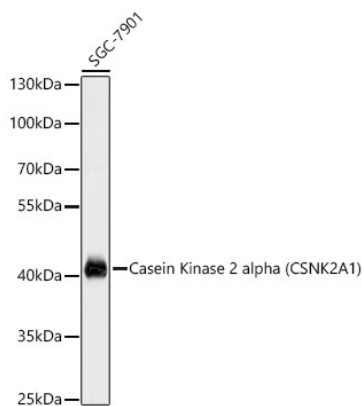
Store at -20°C. Avoid freeze / thaw cycles.

Buffer: PBS containing 50% glycerol, preserved with proclin300 or sodium azide (as specified on the Certificate of Analysis), pH 7.3.

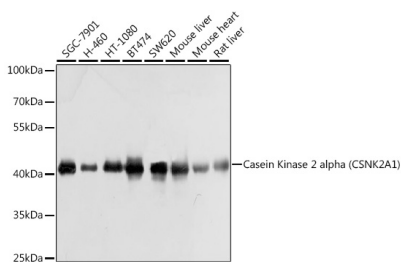
## Validation Data



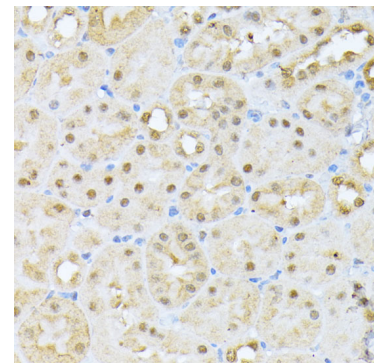
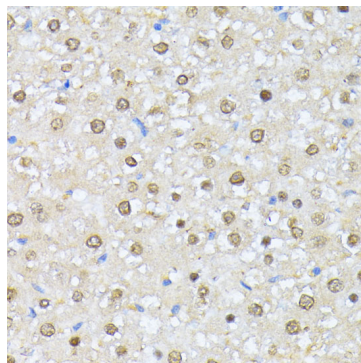
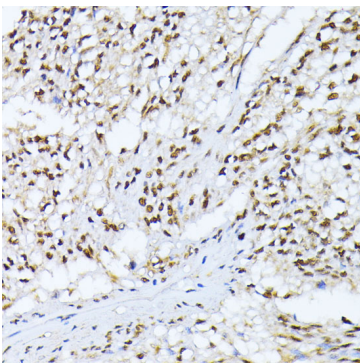
Western blot analysis of various lysates using Casein Kinase 2 alpha (CSNK2A1) Rabbit pAb (A1014) at 1:1000 dilution.  
 Secondary antibody: HRP-conjugated Goat anti-Rabbit IgG (H+L) (AS014) at 1:10000 dilution.  
 Lysates / proteins: 25 µg per lane.  
 Blocking buffer: 3 % nonfat dry milk in TBST.  
 Detection: ECL Basic Kit (RM00020).  
 Exposure time: 5s.



Western blot analysis of lysates from SGC-7901 cells using Casein Kinase 2 alpha (CSNK2A1) Rabbit pAb (A1014) at 1:1000 dilution.  
 Secondary antibody: HRP-conjugated Goat anti-Rabbit IgG (H+L) (AS014) at 1:10000 dilution.  
 Lysates/proteins: 25 µg per lane.  
 Blocking buffer: 3% nonfat dry milk in TBST.  
 Detection: ECL Basic Kit (RM00020).  
 Exposure time: 1s.



Western blot analysis of various lysates using Casein Kinase 2 alpha (CSNK2A1) Rabbit pAb (A1014) at 1:1000 dilution.  
 Secondary antibody: HRP-conjugated Goat anti-Rabbit IgG (H+L) (AS014) at 1:10000 dilution.  
 Lysates/proteins: 25µg per lane.  
 Blocking buffer: 3% nonfat dry milk in TBST.  
 Detection: ECL Basic Kit (RM00020).  
 Exposure time: 1s.



## Validation Data

---

Immunohistochemistry analysis of paraffin-embedded Human gastric cancer using Casein Kinase 2 alpha (CSNK2A1) Rabbit pAb (A1014) at dilution of 1:100 (40x lens). Microwave antigen retrieval performed with 0.01M PBS Buffer (pH 7.2) prior to IHC staining.

Immunohistochemistry analysis of paraffin-embedded Rat liver using Casein Kinase 2 alpha (CSNK2A1) Rabbit pAb (A1014) at dilution of 1:100 (40x lens). Microwave antigen retrieval performed with 0.01M PBS Buffer (pH 7.2) prior to IHC staining.

Immunohistochemistry analysis of paraffin-embedded Mouse kidney using Casein Kinase 2 alpha (CSNK2A1) Rabbit pAb (A1014) at dilution of 1:100 (40x lens). Microwave antigen retrieval performed with 0.01M PBS Buffer (pH 7.2) prior to IHC staining.