

# NDUFA10 Rabbit pAb

Catalog No.: A10123 **7 Publications**

## Basic Information

### Observed MW

38-42kDa

### Calculated MW

41kDa

### Category

Primary antibody

### Applications

WB, ELISA

### Cross-Reactivity

Human, Mouse, Rat

## Background

The protein encoded by this gene is a component of 42 kDa complex I, the first enzyme complex in the electron transport chain of mitochondria. This protein has NADH dehydrogenase activity and oxidoreductase activity. It transfers electrons from NADH to the respiratory chain. A mutation in this gene was found in an individual with Leigh syndrome.

## Recommended Dilutions

**WB** 1:1000 - 1:4000

**ELISA** Recommended starting concentration is 1 µg/mL. Please optimize the concentration based on your specific assay requirements.

## Immunogen Information

### Gene ID

4705

### Swiss Prot

O95299

### Immunogen

Recombinant protein (or fragment). This information is considered to be commercially sensitive.

### Synonyms

CI-42k; CI-42KD; MC1DN22; NDUFA10

## Contact

☎ | 400-999-6126

✉ | [cn.market@abclonal.com.cn](mailto:cn.market@abclonal.com.cn)

🌐 | [www.abclonal.com.cn](http://www.abclonal.com.cn)

## Product Information

### Source

Rabbit

### Isotype

IgG

### Purification

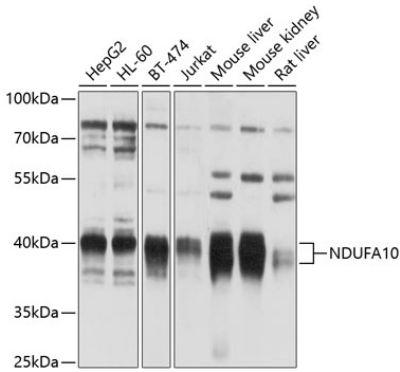
Affinity purification

### Storage

Store at -20°C. Avoid freeze / thaw cycles.

Buffer: PBS with 0.02% sodium azide, 50% glycerol, pH 7.3.

# Validation Data



Western blot analysis of various lysates using NDUFA10 Rabbit pAb (A10123) at 1:1000 dilution.  
Secondary antibody: HRP-conjugated Goat anti-Rabbit IgG (H+L) (AS014) at 1:10000 dilution.  
Lysates/proteins: 25µg per lane.  
Blocking buffer: 3% nonfat dry milk in TBST.  
Detection: ECL Basic Kit (RM00020).  
Exposure time: 30s.