

# PCDH19 Rabbit pAb

Catalog No.: A10067 **1 Publications**

## Basic Information

### Observed MW

170kDa

### Calculated MW

126kDa

### Category

Primary antibody

### Applications

ELISA, WB

### Cross-Reactivity

Human

## Background

The protein encoded by this gene is a member of the delta-2 protocadherin subclass of the cadherin superfamily. The encoded protein is thought to be a calcium-dependent cell-adhesion protein that is primarily expressed in the brain. Mutations in this gene on human chromosome X are associated with sporadic infantile epileptic encephalopathy and to a female-restricted form of epilepsy (EFMR; also known as PCDH19RE). Multiple transcript variants encoding different isoforms have been found for this gene.

## Recommended Dilutions

WB 1:500 - 1:2000

## Immunogen Information

### Gene ID

57526

### Swiss Prot

Q8TAB3

### Immunogen

Recombinant fusion protein containing a sequence corresponding to amino acids 568-678 of human PCDH19 (NP\_001171809.1).

### Synonyms

DEE9; EFMR; EIEE9; PCDH19

## Contact

☎ | 400-999-6126

✉ | [cn.market@abclonal.com.cn](mailto:cn.market@abclonal.com.cn)

🌐 | [www.abclonal.com.cn](http://www.abclonal.com.cn)

## Product Information

### Source

Rabbit

### Isotype

IgG

### Purification

Affinity purification

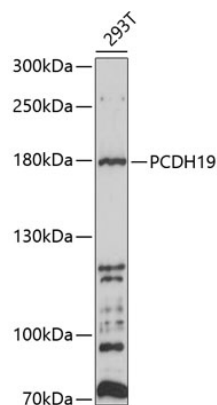
### Storage

Store at -20°C. Avoid freeze / thaw cycles.

Buffer: PBS with 0.02% sodium azide, 50% glycerol, pH7.3.

## Validation Data

---



Western blot analysis of extracts of 293T cells, using PCDH19 antibody (A10067) at 1:1000 dilution.  
Secondary antibody: HRP Goat Anti-Rabbit IgG (H+L) (AS014) at 1:10000 dilution.  
Lysates/proteins: 25µg per lane.  
Blocking buffer: 3% nonfat dry milk in TBST.  
Detection: ECL Basic Kit (RM00020).  
Exposure time: 90s.