

# YAP1 Rabbit pAb

Catalog No.: A1002 **56 Publications**

## Basic Information

### Observed MW

70kDa

### Calculated MW

54kDa

### Category

Primary antibody

### Applications

WB, IHC-P, IF/ICC, IP, ELISA

### Cross-Reactivity

Human, Mouse


## Background

This gene encodes a downstream nuclear effector of the Hippo signaling pathway which is involved in development, growth, repair, and homeostasis. This gene is known to play a role in the development and progression of multiple cancers as a transcriptional regulator of this signaling pathway and may function as a potential target for cancer treatment. Alternative splicing results in multiple transcript variants encoding different isoforms.

## Recommended Dilutions

**WB** 1:2000 - 1:20000**IHC-P** 1:500 - 1:1000**IF/ICC** 1:50 - 1:200**IP** 0.5µg-4µg antibody for  
200µg-400µg extracts of  
whole cells**ELISA** Recommended starting  
concentration is 1 µg/mL.  
Please optimize the  
concentration based on  
your specific assay  
requirements.

## Contact

 | 400-999-6126 | [cn.market@abclonal.com.cn](mailto:cn.market@abclonal.com.cn) | [www.abclonal.com.cn](http://www.abclonal.com.cn)

## Immunogen Information

### Gene ID

10413

### Swiss Prot

P46937

### Immunogen

Recombinant protein (or fragment). This information is considered to be commercially sensitive.

### Synonyms

YAP; YKI; COB1; YAP2; YAP-1; YAP65; YAP1

## Product Information

### Source

Rabbit

### Isotype

IgG

### Purification

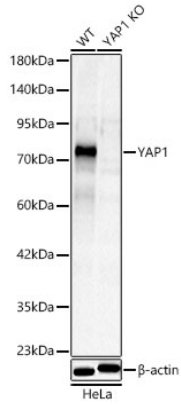
Affinity purification

### Storage

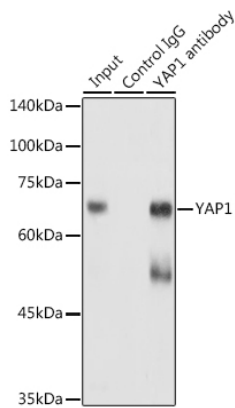
Store at -20°C. Avoid freeze / thaw cycles.

Buffer: PBS containing 50% glycerol, preserved with proclin300 or sodium azide (as specified on the Certificate of Analysis), pH 7.3.

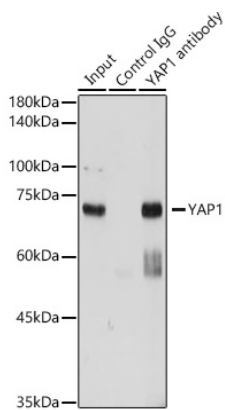
## Validation Data



Western blot analysis of lysates from wild type (WT) and YAP1 knockout (KO) HeLa cells using YAP1 Rabbit pAb (A1002) at 1:2000 dilution.  
Secondary antibody: HRP-conjugated Goat anti-Rabbit IgG (H+L) (AS014) at 1:10000 dilution.  
Lysates/proteins: 25 µg per lane.  
Blocking buffer: 3% nonfat dry milk in TBST.  
Detection: ECL Basic Kit (RM00020).  
Exposure time: 30s.

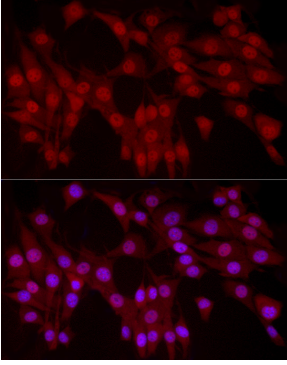


Immunoprecipitation analysis of 300 µg extracts of HeLa cells using 3 µg YAP1 antibody (A1002). Western blot was performed from the immunoprecipitate using YAP1 antibody (A1002) at a dilution of 1:1000.

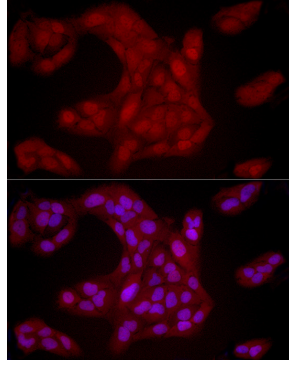


Immunoprecipitation analysis of 300 µg extracts of HeLa cells using 3 µg YAP1 antibody (A1002). Western blot was performed from the immunoprecipitate using YAP1 (A1002) at a dilution of 1:1000.

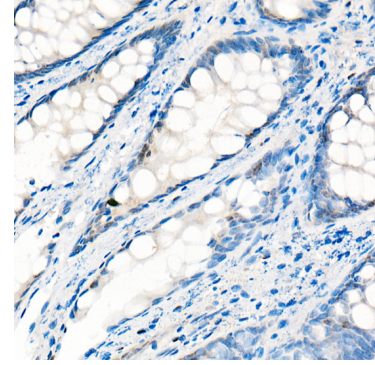
## Validation Data



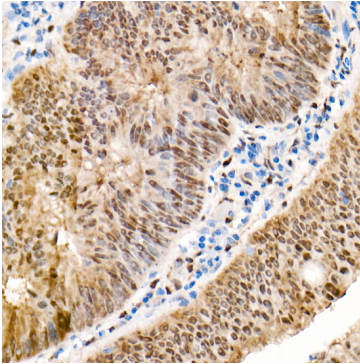
Immunofluorescence analysis of NIH/3T3 cells using YAP1 Rabbit pAb (A1002) at dilution of 1:100 (40x lens). Secondary antibody: Cy3-conjugated Goat anti-Rabbit IgG (H+L) (AS007) at 1:500 dilution. Blue: DAPI for nuclear staining.



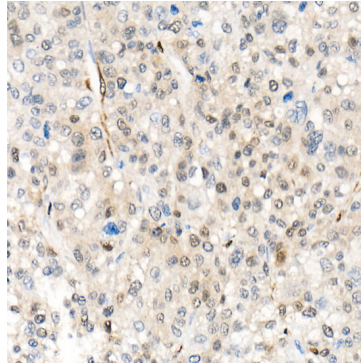
Immunofluorescence analysis of U2OS cells using YAP1 Rabbit pAb (A1002) at dilution of 1:100 (40x lens). Secondary antibody: Cy3-conjugated Goat anti-Rabbit IgG (H+L) (AS007) at 1:500 dilution. Blue: DAPI for nuclear staining.



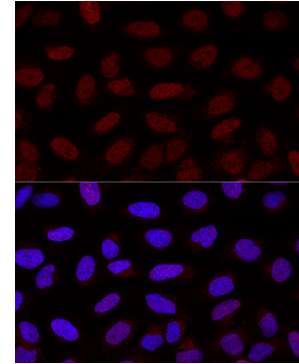
Immunohistochemistry analysis of paraffin-embedded Human colon (low expression samples) using YAP1 Rabbit pAb (A1002) at dilution of 1:1000 (40x lens). High pressure antigen retrieval performed with 0.01M Citrate buffer (pH 6.0) prior to IHC staining.



Immunohistochemistry analysis of paraffin-embedded Human colon carcinoma using YAP1 Rabbit pAb (A1002) at dilution of 1:1000 (40x lens). High pressure antigen retrieval performed with 0.01M Citrate buffer (pH 6.0) prior to IHC staining.



Immunohistochemistry analysis of paraffin-embedded Human liver cancer using YAP1 Rabbit pAb (A1002) at dilution of 1:1000 (40x lens). High pressure antigen retrieval performed with 0.01M Citrate buffer (pH 6.0) prior to IHC staining.



Confocal immunofluorescence analysis of U2OS cells using YAP1 Rabbit pAb (A1002) at dilution of 1:200. Blue: DAPI for nuclear staining.