

[KO Validated] MyD88 Rabbit PolymAb®

Catalog No.: A0980PM **KO Validated**

Basic Information

Observed MW

33 kDa

Calculated MW

15-33 kDa

Category

Primary antibody

Applications

WB,IP,ELISA

Cross-Reactivity

Human, Mouse, Rat

Background

This gene encodes a cytosolic adapter protein that plays a central role in the innate and adaptive immune response. This protein functions as an essential signal transducer in the interleukin-1 and Toll-like receptor signaling pathways. These pathways regulate that activation of numerous proinflammatory genes. The encoded protein consists of an N-terminal death domain and a C-terminal Toll-interleukin1 receptor domain. Patients with defects in this gene have an increased susceptibility to pyogenic bacterial infections. Alternate splicing results in multiple transcript variants.

Recommended Dilutions

WB 1:1000 - 1:5000

IP 0.5µg-4µg antibody for
200µg-600µg extracts of
whole cells

ELISA Recommended starting
concentration is 1 µg/mL.
Please optimize the
concentration based on
your specific assay
requirements. For high-
ratio antibody dilutions
(≥1:10000) a sequential
dilution method is
strongly recommended
to ensure measurement
accuracy.

Immunogen Information

Gene ID

4615

Swiss Prot

Q99836

Immunogen

This information is considered to be commercially sensitive.

Synonyms

WM1; IMD68; MYD88D; MyD88

Product Information

Source

Rabbit

Isotype

IgG

Purification

Affinity purification

Storage

Store at -20°C. Avoid freeze / thaw cycles.

Buffer: PBS, pH 7.3, containing 50% glycerol. Preserved with Proclin300 or sodium azide.

May contain 0.05% BSA as specified on the Certificate of Analysis.

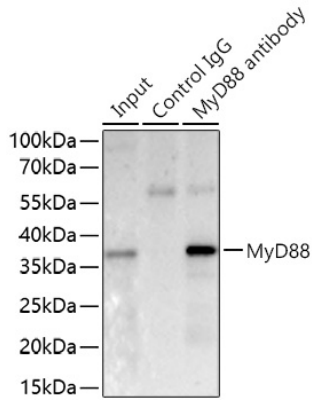
Contact

 | 400-999-6126

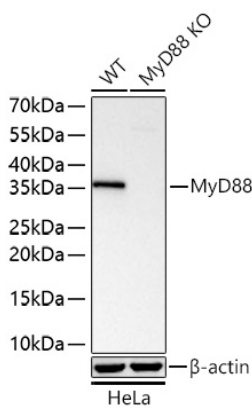
 | cn.market@abclonal.com.cn

 | www.abclonal.com.cn

Validation Data



Immunoprecipitation of MyD88 from 500 µg extracts of A549 cells was performed using 1 µg of [KO Validated] MyD88 Rabbit PolymAb® (A0980PM). Rabbit Control IgG (AC005) was used to precipitate the Control IgG sample. IP samples were eluted with 1x Laemmli Buffer. The Input lane represents 10% of the total input. Western blot analysis of immunoprecipitates was conducted using [KO Validated] MyD88 Rabbit PolymAb® (A0980PM) at a dilution of 1:8000.



Western blot analysis of lysates from wild type (WT) and MyD88 knockout (KO) HeLa cells using [KO Validated] MyD88 Rabbit PolymAb® (A0980PM) at 1:3000 dilution incubated overnight at 4°C. Secondary antibody: HRP-conjugated Goat anti-Rabbit IgG (H+L) (AS014) at 1:10000 dilution. Lysates/proteins: 25 µg per lane. Blocking buffer: 3% nonfat dry milk in TBST. Detection: ECL Basic Kit (RM00020). Exposure time: 45 s.