

HSP60/HSPD1 Rabbit pAb

Catalog No.: A0969 **16 Publications**

Basic Information

Observed MW

61kDa

Calculated MW

61kDa

Category

Primary antibody

Applications

WB,IF/ICC,IHC-P,IP,ELISA

Cross-Reactivity

Human, Mouse, Rat

Background

This gene encodes a member of the chaperonin family. The encoded mitochondrial protein may function as a signaling molecule in the innate immune system. This protein is essential for the folding and assembly of newly imported proteins in the mitochondria. This gene is adjacent to a related family member and the region between the 2 genes functions as a bidirectional promoter. Several pseudogenes have been associated with this gene. Two transcript variants encoding the same protein have been identified for this gene. Mutations associated with this gene cause autosomal recessive spastic paraplegia 13.

Recommended Dilutions

WB	1:500 - 1:5000
IF/ICC	1:50 - 1:400
IHC-P	1:50 - 1:200
IP	0.5µg-4µg antibody for 200µg-400µg extracts of whole cells
ELISA	Recommended starting concentration is 1 µg/mL. Please optimize the concentration based on your specific assay requirements.

Contact

☎ | 400-999-6126

✉ | cn.market@abclonal.com.cn

🌐 | www.abclonal.com.cn

Immunogen Information

Gene ID

3329

Swiss Prot

P10809

Immunogen

Recombinant protein (or fragment). This information is considered to be commercially sensitive.

Synonyms

HLD4; CPN60; GROEL; HSP60; HSP65; SPG13; HSP-60; HuCHA60; HSP60/HSPD1

Product Information

Source

Rabbit

Isotype

IgG

Purification

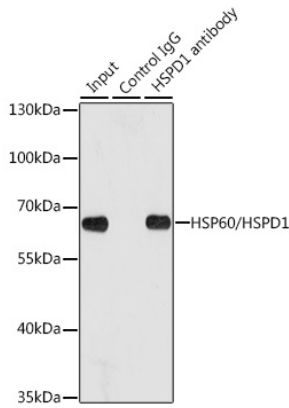
Affinity purification

Storage

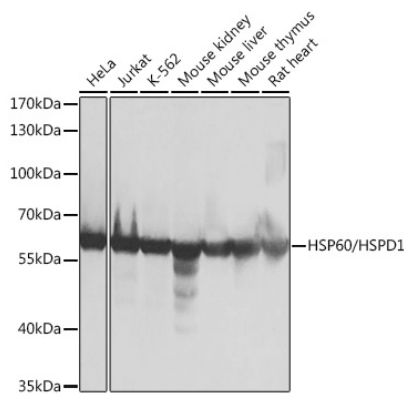
Store at -20°C. Avoid freeze / thaw cycles.

Buffer: PBS with 0.09% Sodium azide, 50% glycerol, pH7.3.

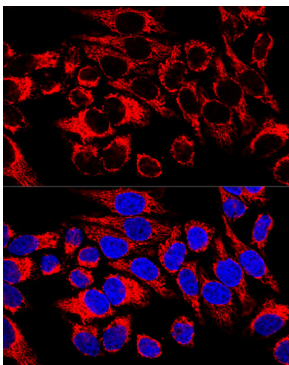
Validation Data



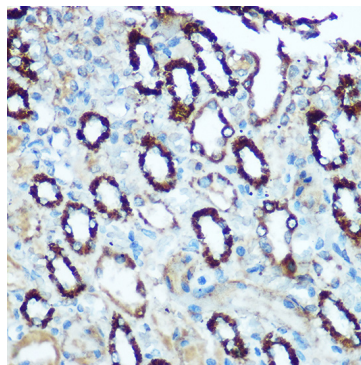
Immunoprecipitation analysis of 200 µg extracts of HeLa cells using 1 µg HSP60/HSPD1 antibody (A0969). Western blot was performed from the immunoprecipitate using HSP60/HSPD1 antibody (A0969) at a dilution of 1:1000.



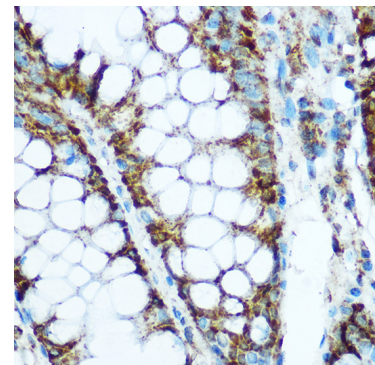
Western blot analysis of various lysates using HSP60/HSPD1 Rabbit pAb (A0969) at 1:1000 dilution. Secondary antibody: HRP-conjugated Goat anti-Rabbit IgG (H+L) (AS014) at 1:10000 dilution. Lysates/proteins: 25µg per lane. Blocking buffer: 3% nonfat dry milk in TBST. Detection: ECL Basic Kit (RM00020). Exposure time: 10s.



Confocal immunofluorescence analysis of HeLa cells using HSP60/HSPD1 Rabbit pAb (A0969) at dilution of 1:400. Blue: DAPI for nuclear staining.

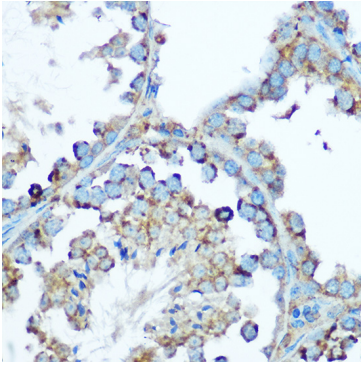


Immunohistochemistry analysis of paraffin-embedded Rat kidney using HSP60/HSPD1 Rabbit pAb (A0969) at dilution of 1:100 (40x lens). Microwave antigen retrieval performed with 0.01M Tris/EDTA Buffer (pH 9.0) prior to IHC staining.

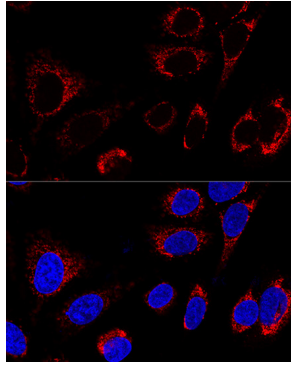


Immunohistochemistry analysis of paraffin-embedded Human colon using HSP60/HSPD1 Rabbit pAb (A0969) at dilution of 1:100 (40x lens). Microwave antigen retrieval performed with 0.01M Tris/EDTA Buffer (pH 9.0) prior to IHC staining.

Validation Data



Immunohistochemistry analysis of paraffin-embedded Mouse testis using HSP60/HSPD1 Rabbit pAb (A0969) at dilution of 1:100 (40x lens). Microwave antigen retrieval performed with 0.01M Tris/EDTA Buffer (pH 9.0) prior to IHC staining.



Confocal immunofluorescence analysis of U2OS cells using HSP60/HSPD1 Rabbit pAb (A0969) at dilution of 1:100. Blue: DAPI for nuclear staining.